

Survey

We survey the air and water environments in the city to protect residents' safe, secure living situation.

Air surveys

● Constant air monitoring

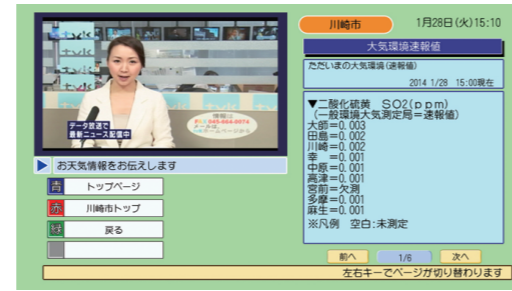
We measure pollutant concentration in the air seven days a week, 365 days a year at 18 measuring stations in the city. Measurement data is shared via the Internet and data broadcasting on Television Kanagawa.



A measuring station



Air-measurement equipment in a measuring station



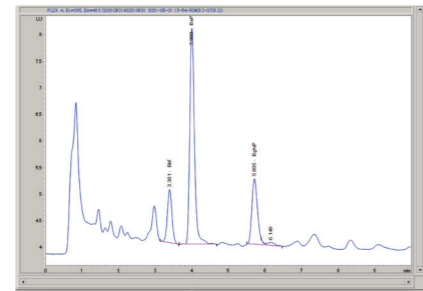
Data broadcasting on Television Kanagawa

● Monitoring surveys of hazardous air pollutants

We regularly measure environmental concentration of hazardous air pollutants such as benzene and toluene to assess air conditions.



Collecting dust in the air



Analysis of dust composition

● Environmental radioactivity surveys

We conduct surveys of radioactivity in the environment based on Kawasaki City's local disaster preparedness plan.



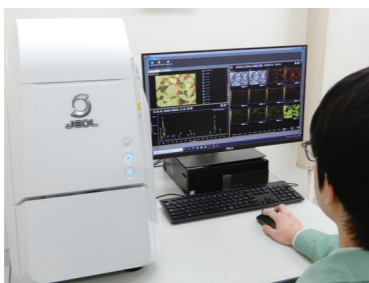
Measuring environmental radioactivity with an instrument

● Asbestos surveys

We survey asbestos concentration in the environment.



Collecting asbestos in the air



Measuring asbestos with an electron microscope

Accident response

We investigate the cause if foul odors or abnormalities are confirmed in the water of the river or sea.



Collecting water at the scene of an accident

Water surveys

● Surveys of the river and ocean, etc.

We conduct water quality surveys to check that water quality in the river and sea meets environmental standards. We also survey chemical substances in mud on the seabed and inside the bodies of fish.



Water quality surveys at water-related amenities



Collecting sea mud in the ocean



Sea bass harvested from the ocean

● Biological surveys

We survey water quality in the river and ocean, mud properties, and types and numbers of organisms to check the habitats of living things.



Collecting organisms in the river



The relationship between water quality and living things

The status of organisms living in rivers and the ocean (particularly small insects, etc.) is closely related to water cleanliness. Therefore, we research types and numbers of living things to monitor water quality, which is reflected in such changes.



Observing collected organisms

● Inspections of factory and facility drainage

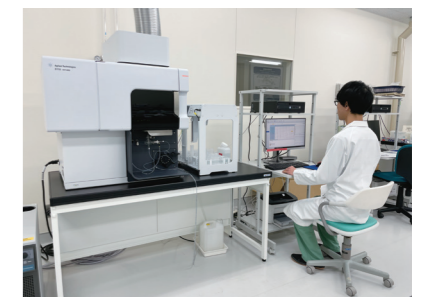
We regularly perform inspections to confirm that drainage from factories and other facilities is processed appropriately in conformity with standards for draining into rivers and the ocean.



Sampling drainage at an operational facility



Processing to remove impurities



Measuring heavy metals such as zinc and chromium