

The Aims of Kawasaki Environment Research Institute

- Kawasaki City's strengths lie in the accumulated experience and outstanding environmental technology both gained through the process of improving the environment.
- To pass on a better environment to the next generation, it is necessary to further decrease burdens on the environment. Also required is to grapple with global environmental issues which will become more diverse and complicated, including climate change.
- The Environment Research Institute is advancing initiatives based on the three functions of research, survey, and networking to solve these environmental issues in Japan and abroad.

Environmental Issues Tackled by the Research Institute

◇ Climate change

The effects of climate changes, such as rising temperatures and increasing frequency of heavy rains, have become apparent in recent years, making it indispensable to work out measures against these changes, including the heat island effect in urban areas.

◇ Air/water environment

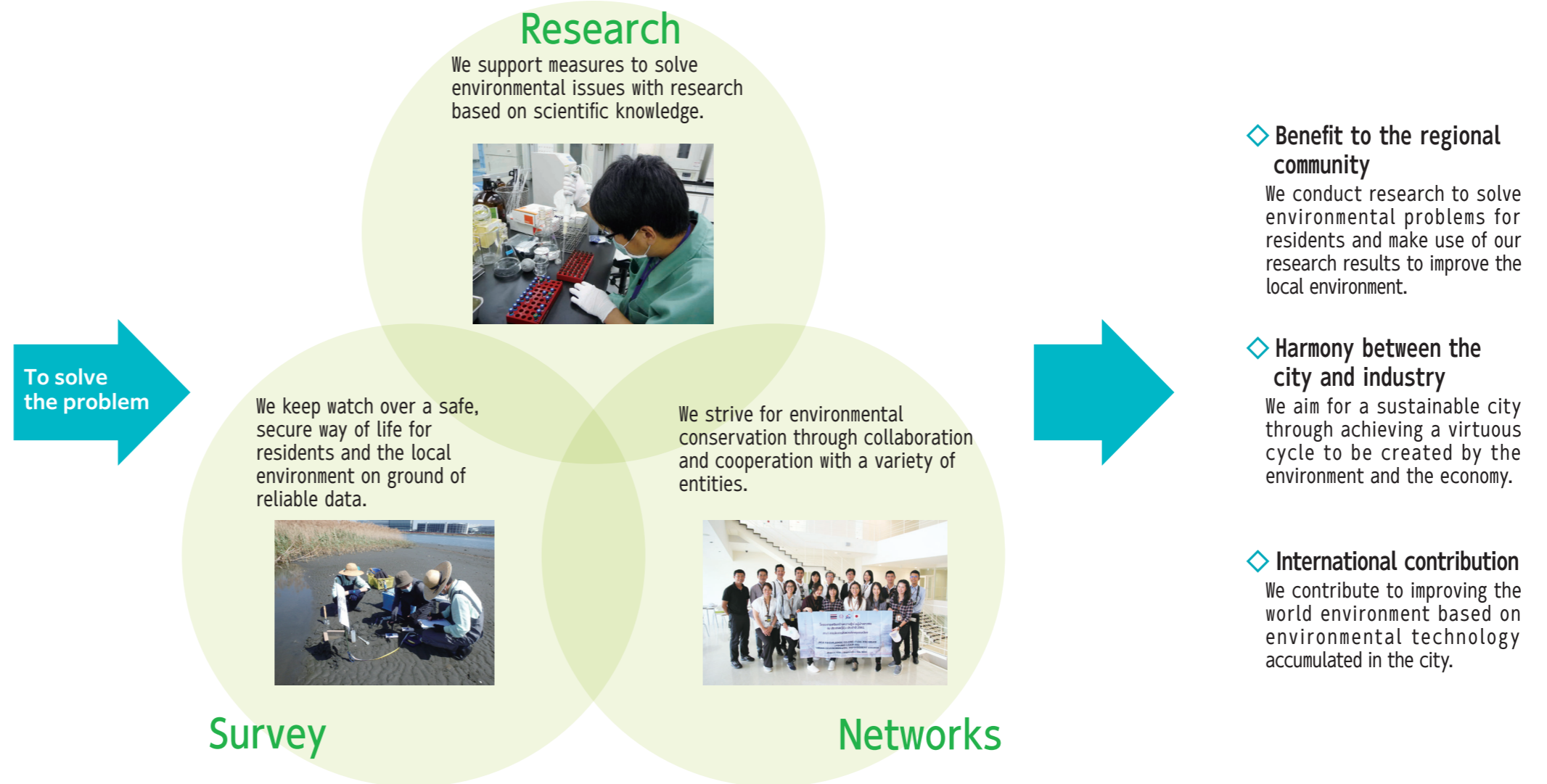
Although the air and water environments have improved significantly, a complete solution is still a step away while the public cannot actually feel the environmental improvement in such broad-based issues as photochemical smog and water quality in Tokyo Bay.

◇ Resource circulation

Plastic waste has become a worldwide problem, and realization of a recycling-oriented society, by such measures as reducing and reusing trash, is necessary to lessen burdens on the environment.

◇ Harmony between people and nature

In order to conserve biodiversity, there is a need to increase interest in nature and living creatures, and to collect and disseminate relevant information.



◇ Benefit to the regional community

We conduct research to solve environmental problems for residents and make use of our research results to improve the local environment.

◇ Harmony between the city and industry

We aim for a sustainable city through achieving a virtuous cycle to be created by the environment and the economy.

◇ International contribution

We contribute to improving the world environment based on environmental technology accumulated in the city.

Contributions to the Sustainable Development Goals (SDGs)

Each of our employees fully understands the intent of the SDGs and, based on those principles and objectives, is advancing efforts to realize a sustainable society.



Kawasaki Environment Research Institute

- Project promotion
Accepting research/observation teams, collecting/sharing environmental technology information, etc.
- International cooperation/research promotion
Research related to international cooperation
- Urban environment (Kawasaki Local Climate Change Information Center)
Research on changes in climate; collaborative research between industry, academia, and the public; and so forth
- Environmental research
Research on air, environmental survey on chemical substances, environmental risk assessment, etc.
- Regional environment & pollution monitoring
Measurement operations related to constant monitoring, water quality/biological research, etc.

Contributions to the decarbonization strategy Kawasaki Carbon Zero Challenge 2050

Kawasaki City is carrying out efforts with the goal of reducing greenhouse gas emissions substantially to zero by 2050 as a countermeasure against pressing climate change issues. Kawasaki Environment Research Institute will also carry out research from a new perspective based on the impact of climate change.

