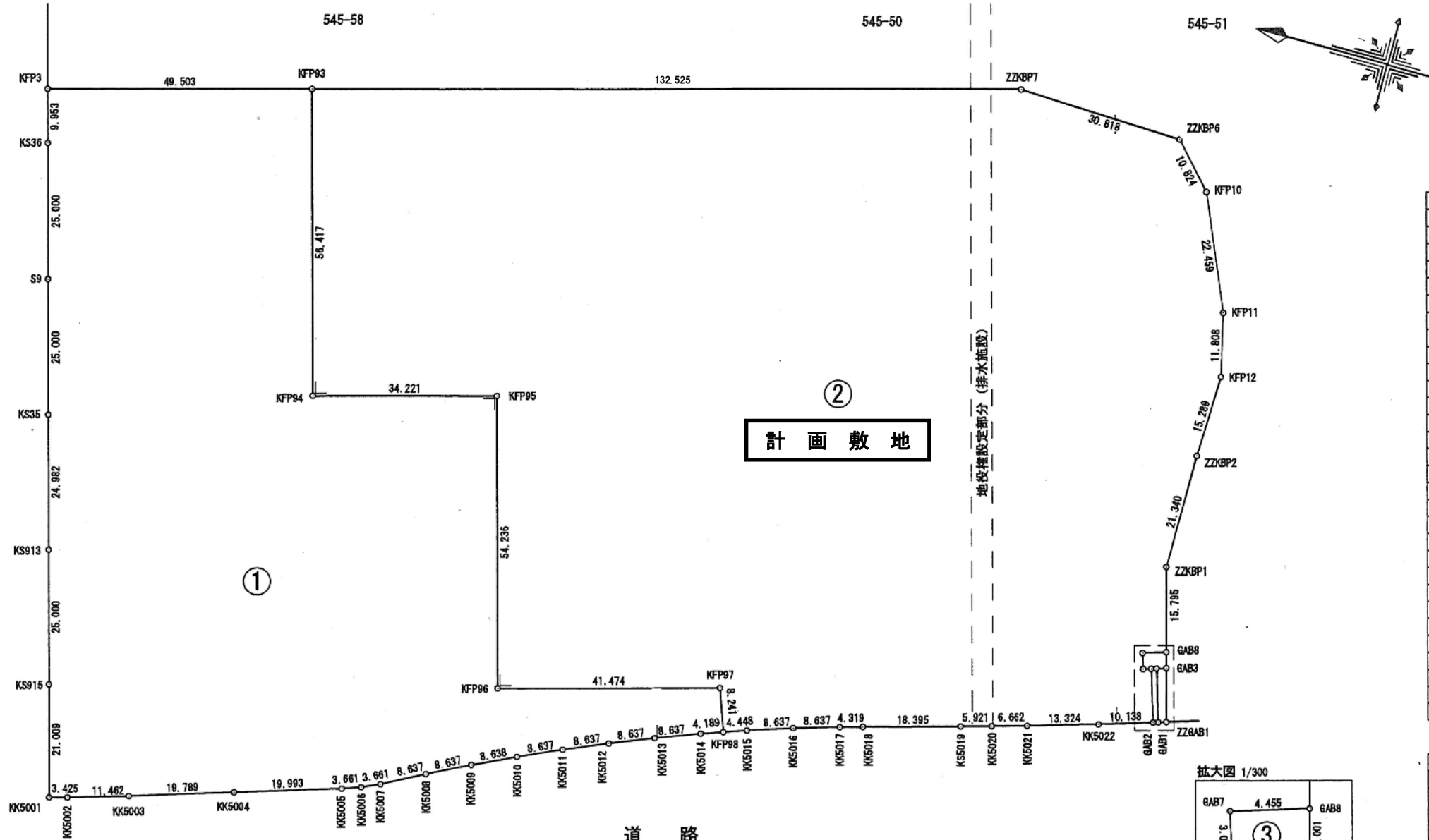
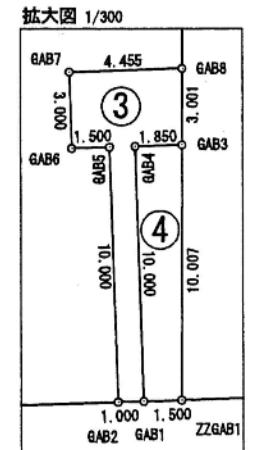


小倉跨線橋



② 計画敷地



地番	①	X <sub>n</sub>	Y <sub>n</sub>	Y <sub>n+1</sub> -Y <sub>n-1</sub>	X <sub>n</sub> ・(Y <sub>n+1</sub> -Y <sub>n-1</sub> )
測点名					
KK5001		-51154.475	-14293.252	-19.369	990811.026275
KK5002		-51157.778	-14292.345	4.158	-212714.040924
KK5003		-51168.769	-14289.094	9.113	-466300.991897
KK5004		-51187.670	-14283.232	11.715	-599663.554050
KK5005		-51206.787	-14277.379	7.060	-361519.916220
KK5006		-51210.243	-14276.172	2.695	-138011.604885
KK5007		-51213.588	-14274.684	5.498	-281572.306824
KK5008		-51221.238	-14270.674	7.859	-402547.709442
KK5009		-51228.970	-14266.825	7.534	-385959.059980
KK5010		-51236.782	-14263.140	7.204	-369109.777528
KK5011		-51244.670	-14259.621	6.871	-352102.127570
KK5012		-51252.630	-14256.269	6.536	-334987.189680
KK5013		-51260.659	-14253.085	6.199	-317764.825141
KK5014		-51268.753	-14250.070	4.394	-225274.900682
KFP98		-51272.709	-14248.691	9.160	-469658.014440
KFP97		-51269.995	-14240.910	-3.084	158116.664580
KFP96		-51229.969	-14251.775	41.477	-2124865.424213
KFP95		-51215.761	-14199.433	43.377	-2221586.064897
KFP94		-51182.735	-14208.398	45.482	-2327893.153270
KFP93		-51167.955	-14153.951	41.517	-2124339.987735
KFP3		-51120.170	-14166.881	-22.536	1152044.151120
KS36		-51122.777	-14176.487	-33.734	1724575.759318
S9		-51129.324	-14200.615	-48.255	2467245.529620
KS35		-51135.871	-14224.742	-48.234	2466487.601814
KS913		-51142.426	-14248.849	-48.234	2466803.775684
KS915		-51148.973	-14272.976	-44.403	2271167.848119
合計					-18618.292848
合計面積					9309.1464240
地積					9309.14 m <sup>2</sup>

地番	②	X <sub>n</sub>	Y <sub>n</sub>	Y <sub>n+1</sub> -Y <sub>n-1</sub>	X <sub>n</sub> ・(Y <sub>n+1</sub> -Y <sub>n-1</sub> )
測点名					
KFP93		-51167.955	-14153.951	-89.063	4557171.576165
KFP94		-51182.735	-14208.398	-45.482	2327893.153270
KFP95		-51215.761	-14199.433	-43.377	2221586.064897
KFP96		-51229.969	-14251.775	-41.477	2124865.424213
KFP97		-51269.995	-14240.910	3.084	-158116.664580
KFP98		-51272.709	-14248.691	-6.317	323889.702753
KK5015		-51276.909	-14247.227	4.134	-211978.741806
KK5016		-51285.123	-14244.557	5.167	-264990.230541
KK5017		-51293.391	-14242.060	3.657	-187579.930887
KK5018		-51297.551	-14240.900	6.106	-313222.846406
KS5019		-51315.269	-14235.954	6.538	-335499.228722
KK5020		-51320.972	-14234.362	3.404	-174696.588688
KK5021		-51327.383	-14232.550	5.551	-284918.303033
KK5022		-51340.172	-14228.811	6.703	-344133.172916
GAB2		-51349.867	-14225.847	12.527	-643259.783909
GAB5		-51346.944	-14216.284	9.124	-468489.517056
GAB6		-51345.510	-14216.723	2.430	-124769.589300
GAB7		-51344.632	-14213.854	4.171	-214158.460072
GAB8		-51348.892	-14212.552	16.559	-850286.302628
ZZKBP1		-51344.805	-14197.295	36.597	-1879065.828585
ZZKBP2		-51344.889	-14175.955	36.620	-1880249.835180
KFP12		-51345.405	-14160.675	26.785	-1375286.672925
KFP11		-51342.749	-14149.170	32.167	-1651542.207083
KFP10		-51333.945	-14128.508	28.681	-1472308.876545
ZZKBP6		-51326.675	-14120.489	9.173	-470819.589775
ZZKBP7		-51295.879	-14119.335	-33.462	1716462.703098
合計					-33503.746241
合計面積					16751.8731205
地積					16751.87 m <sup>2</sup>

地番	③ ガバナ整圧器用地	X <sub>n</sub>	Y <sub>n</sub>	Y <sub>n+1</sub> -Y <sub>n-1</sub>	X <sub>n</sub> ・(Y <sub>n+1</sub> -Y <sub>n-1</sub> )
測点名					
GAB7		-51344.632	-14213.854	-4.171	214158.460072
GAB6		-51345.510	-14216.723	-2.430	124769.589300
GAB5		-51346.944	-14216.284	-9.124	468489.517056
GAB2		-51349.867	-14225.847	-9.271	476064.616957
GAB1		-51350.823	-14225.555	9.855	-506062.360665
GAB4		-51347.900	-14215.992	10.104	-518819.181600
GAB3		-51349.669	-14215.451	3.440	-176642.861360
GAB8		-51348.892	-14212.552	1.597	-82004.180524
合計					-46.400764
合計面積					23.2003820
地積					23.20 m <sup>2</sup>

地番	④	X <sub>n</sub>	Y <sub>n</sub>	Y <sub>n+1</sub> -Y <sub>n-1</sub>	X <sub>n</sub> ・(Y <sub>n+1</sub> -Y <sub>n-1</sub> )
測点名					
GAB4		-51347.900	-14215.992	-10.104	518819.181600
GAB1		-51350.823	-14225.555	-9.125	468576.259875
ZZGAB1		-51352.258	-14225.117	10.104	-518863.214832
GAB3		-51349.669	-14215.451	9.125	-468565.729625
合計					-33.502982
合計面積					16.7514910
地積					16.75 m <sup>2</sup>

図面名	分割計画図	所在地番	川崎市幸区新小倉545-50、-51、-58の一部	縮尺	備考	作成者
				1 : 1000		
				作成年月日		
				平成25年8月20日		