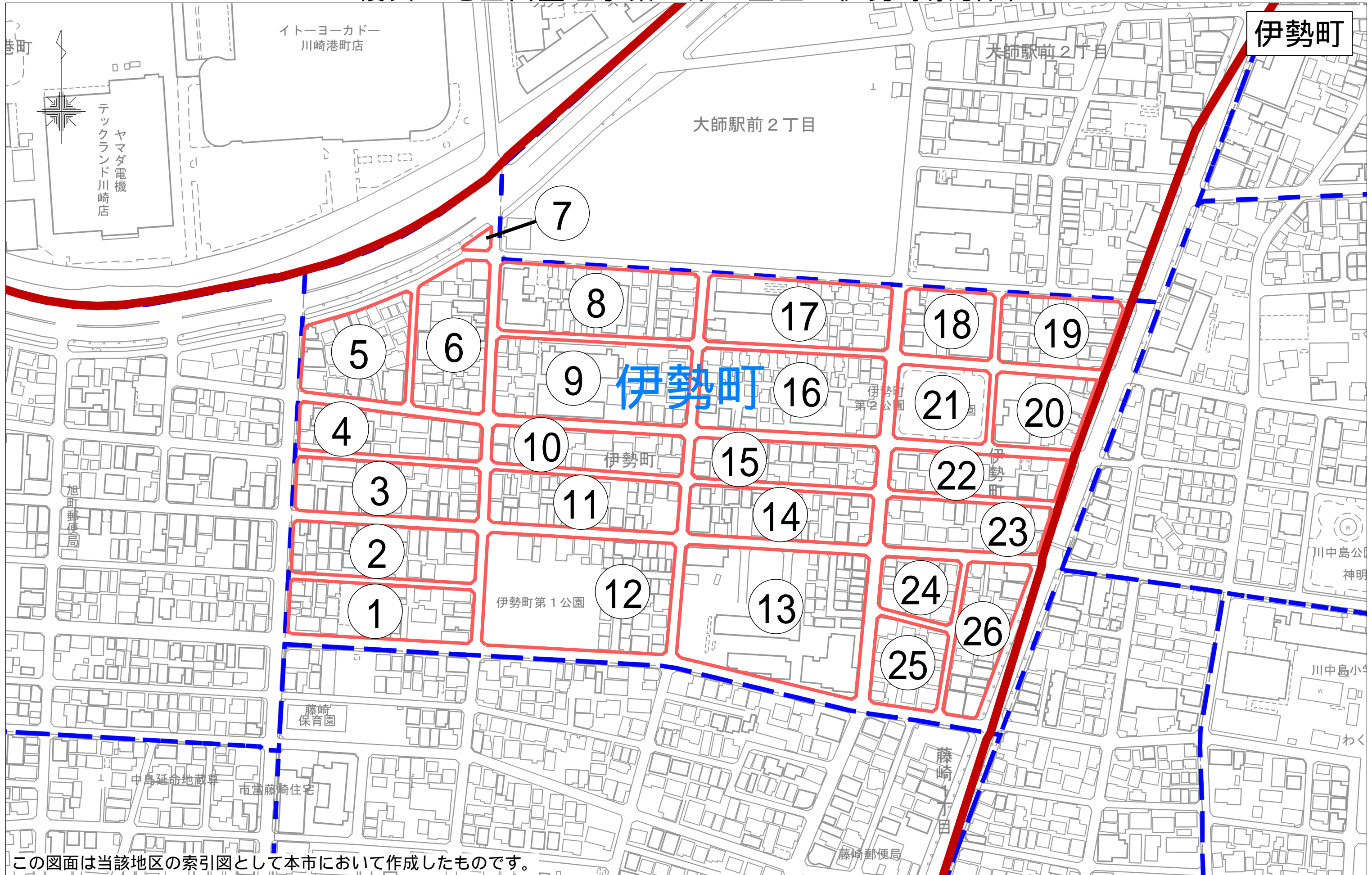


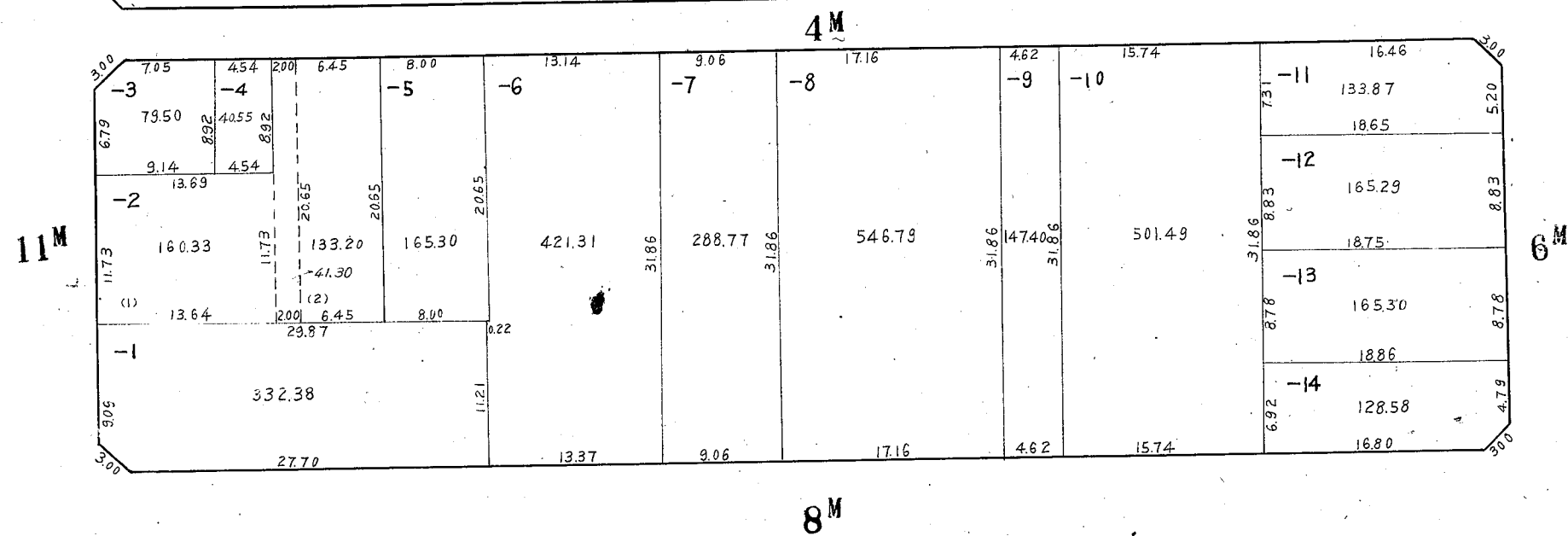
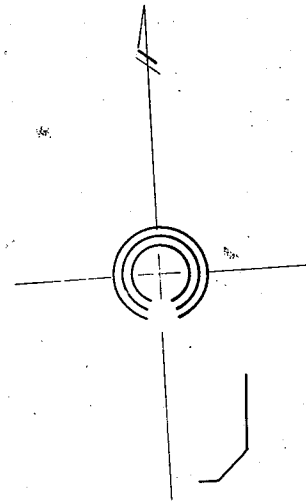
# 復興土地区画整理事業 第2工区 伊勢町索引図



# 川崎区伊勢町 1 番換地図

縮尺 1:500

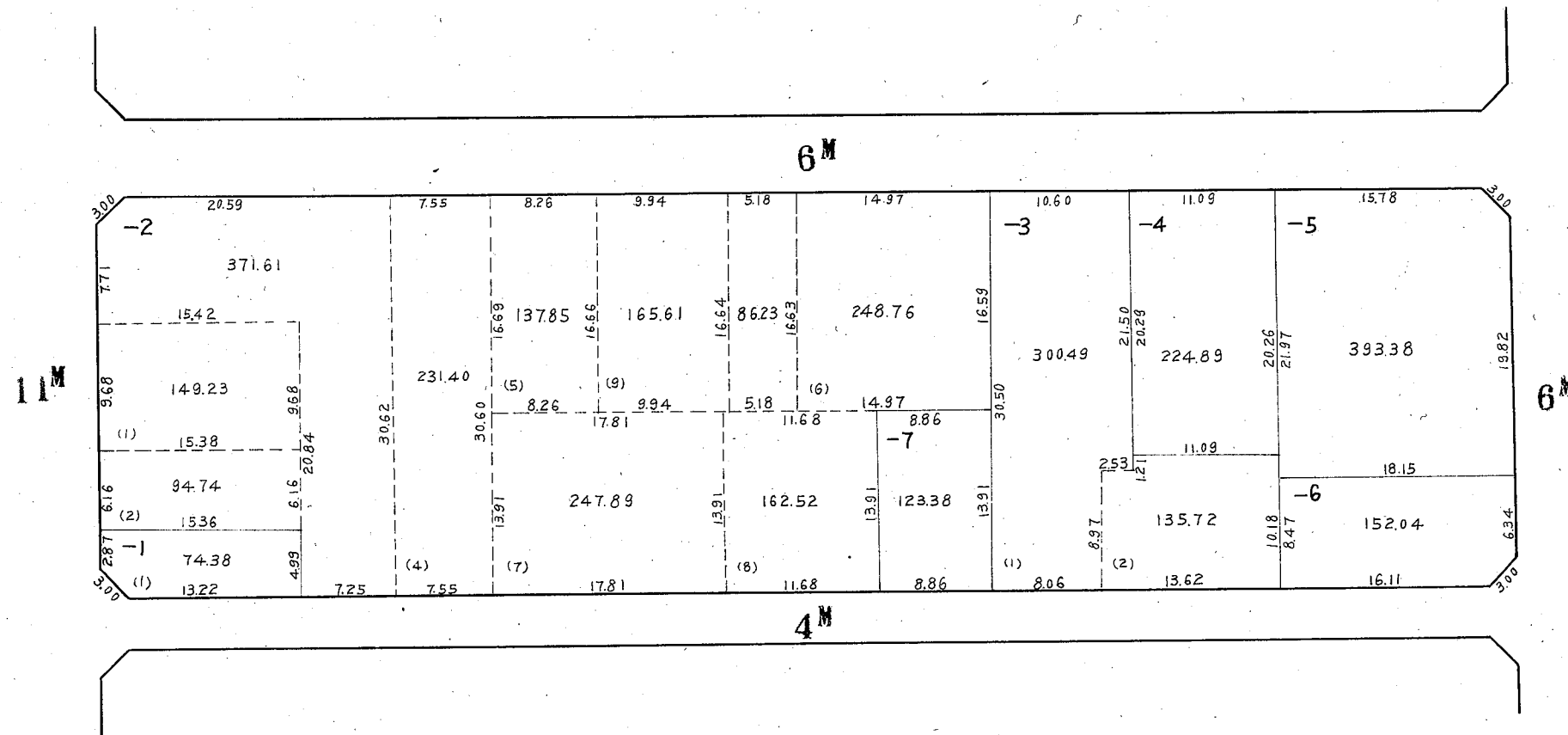
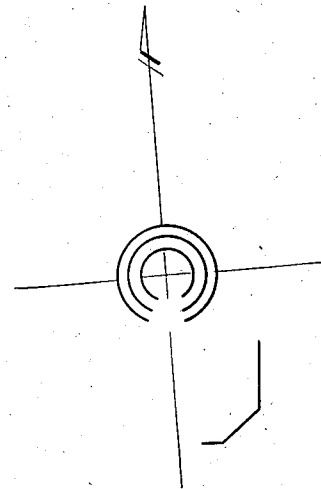
47



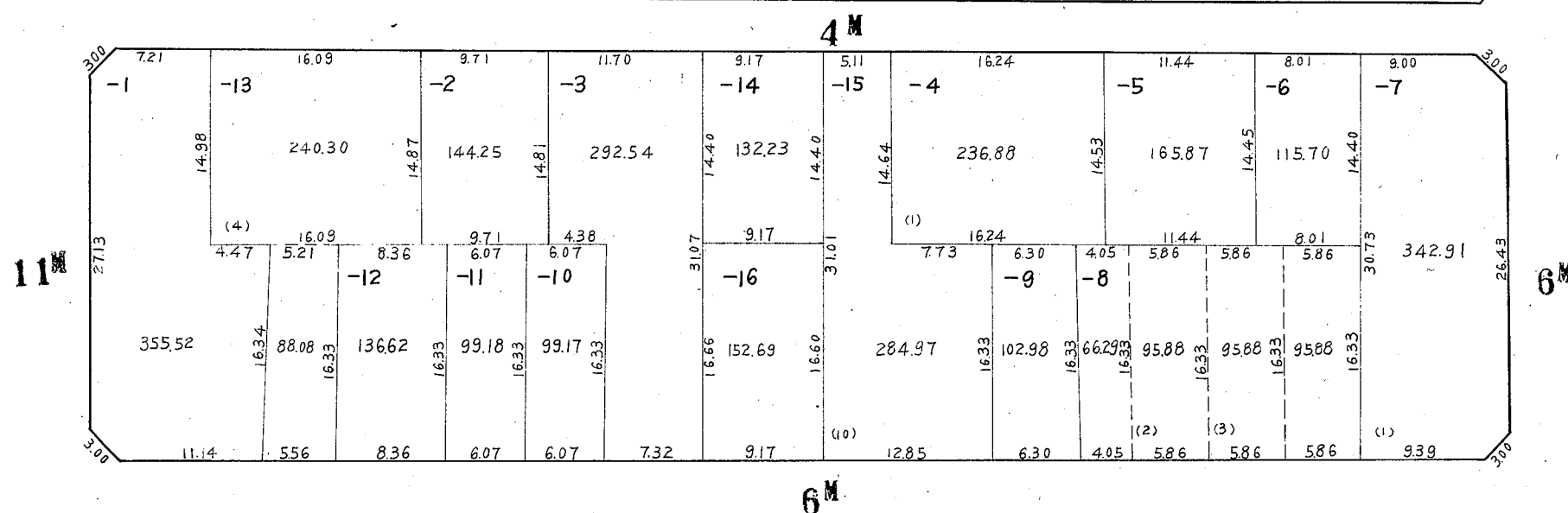
# 川崎区伊勢町 2 番換地図

縮尺 1:500

48



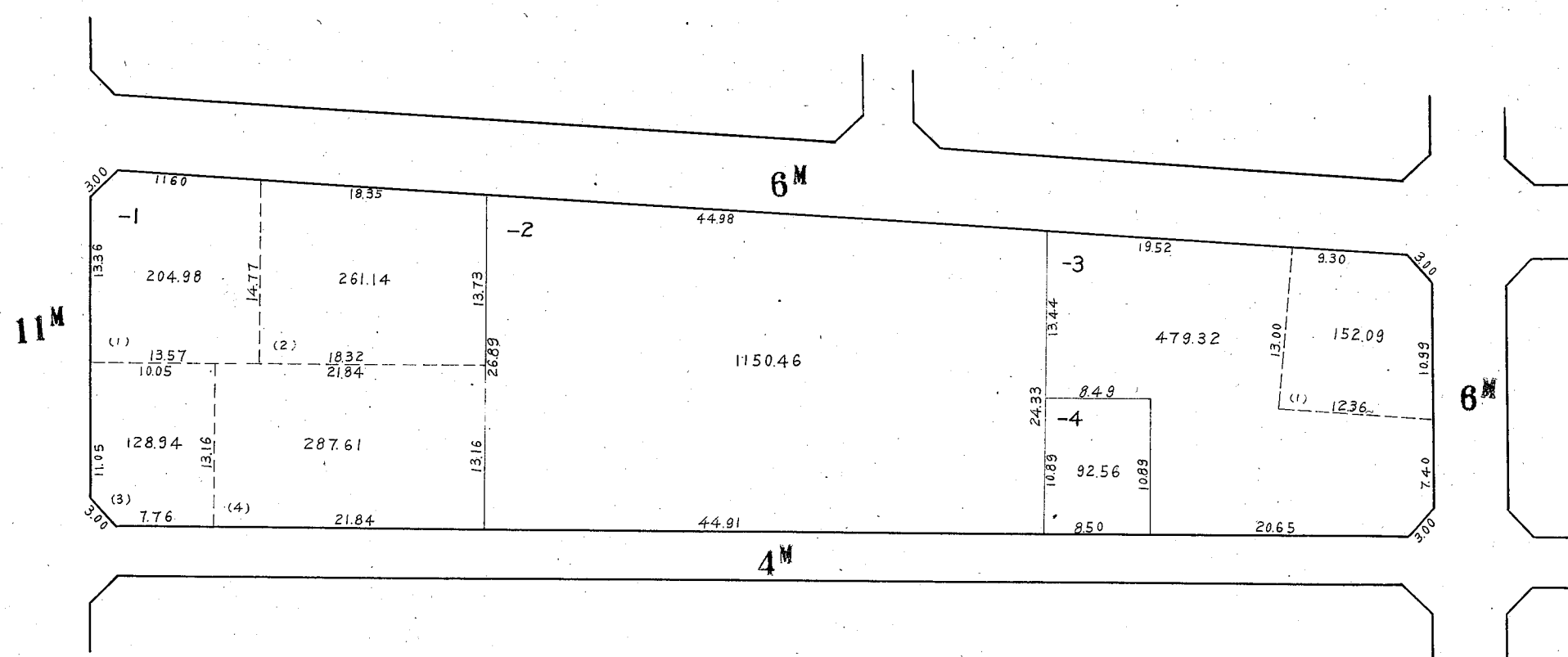
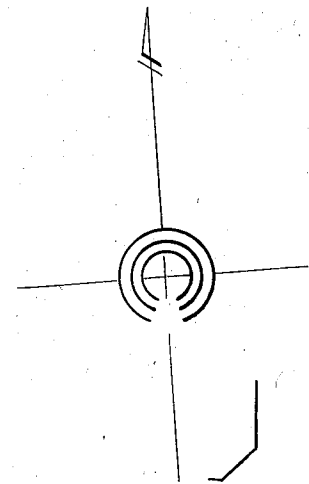
縮尺 1:500



# 川崎区伊勢町 4 番換地図

縮尺 1:500

50

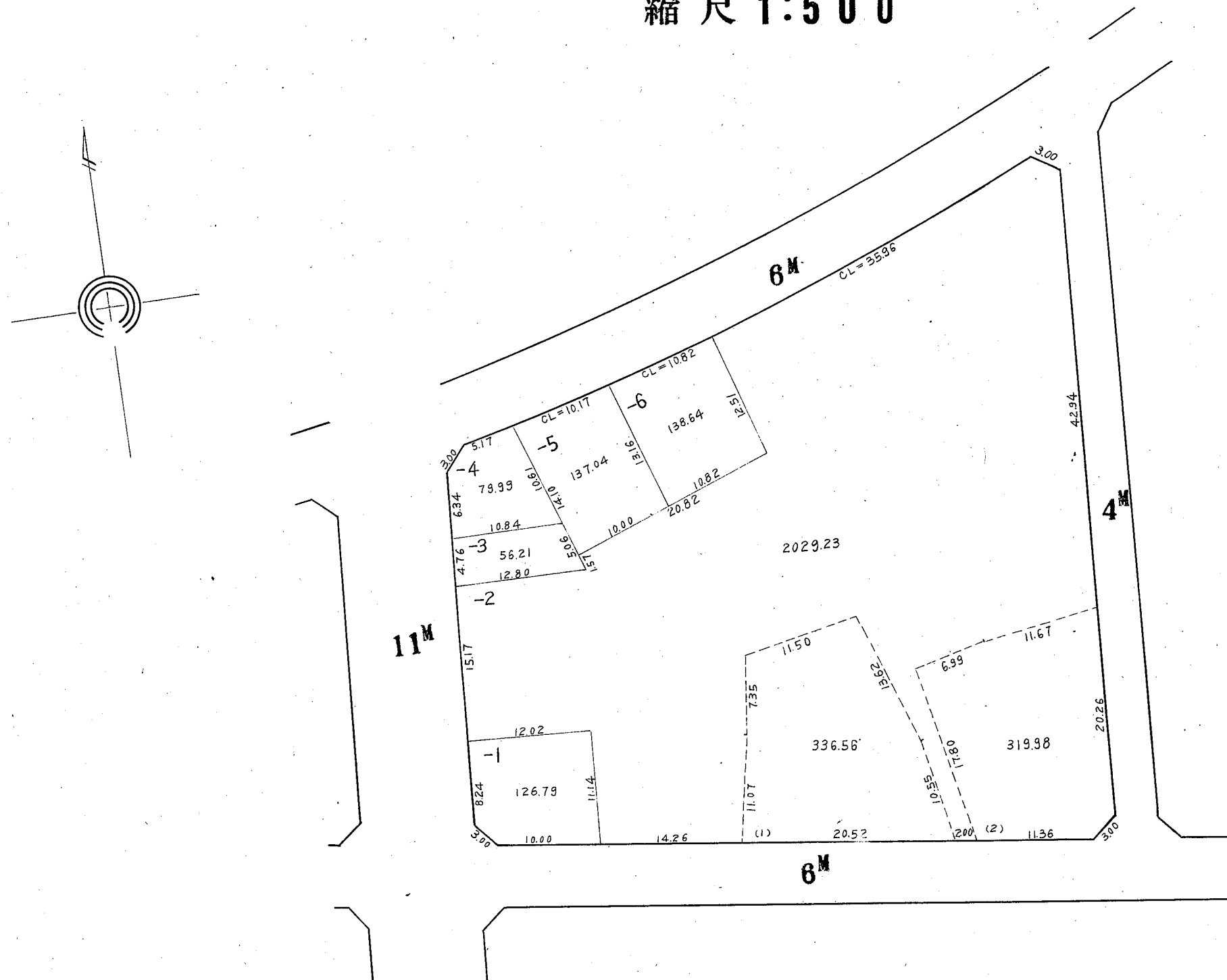




## 川崎区伊勢町 5 番換地図

縮尺 1:500

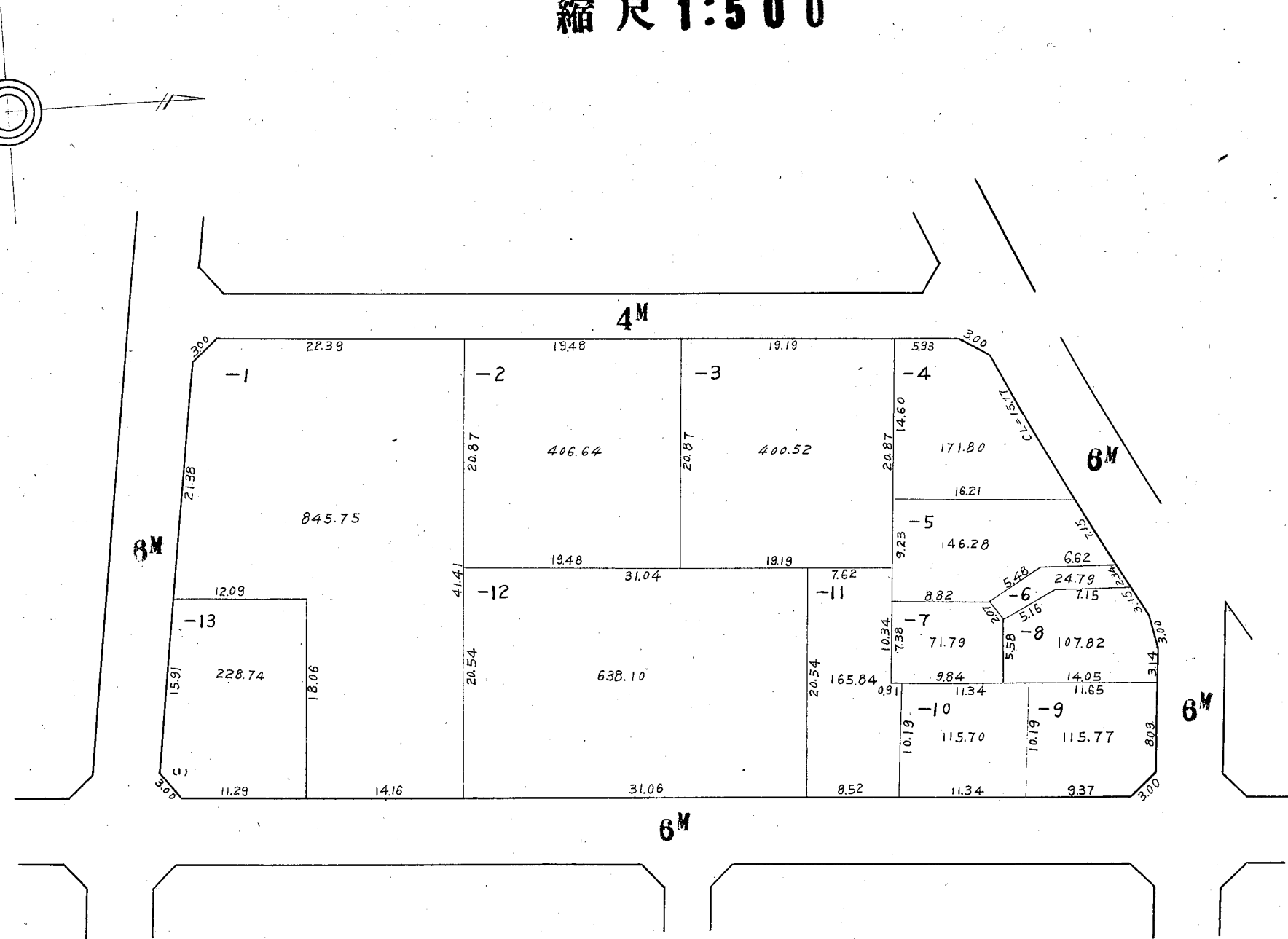
51



# 川崎区伊勢町 6 番換地図

縮尺 1:500

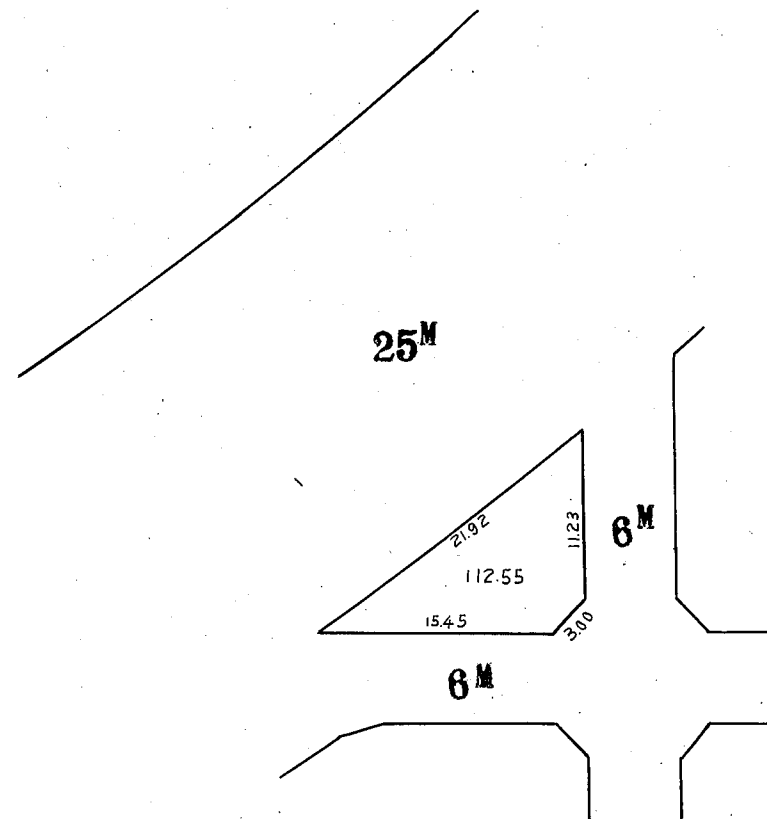
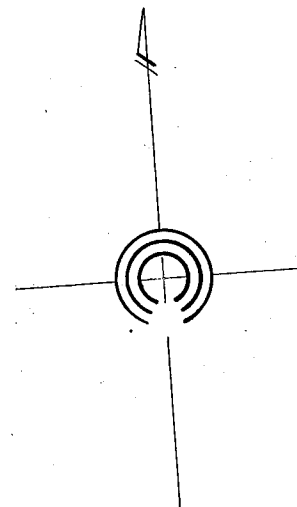
52



# 川崎区伊勢町 7 番換地図

縮尺 1:500

53

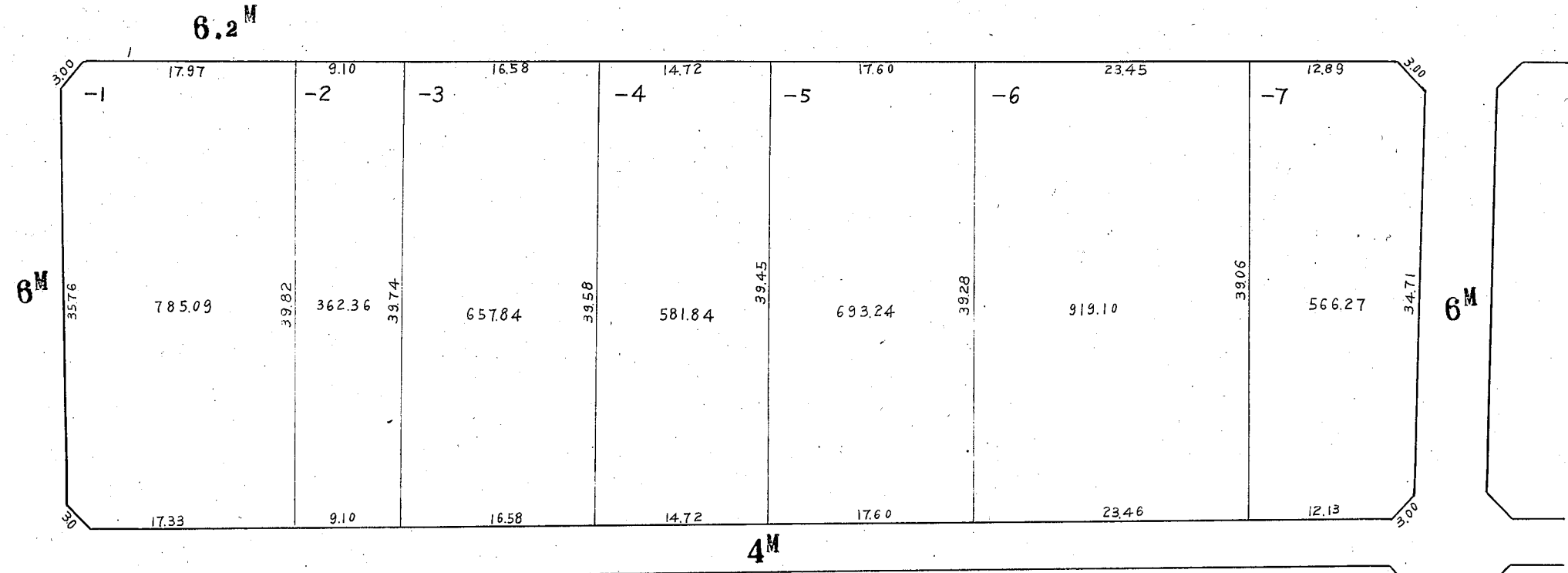
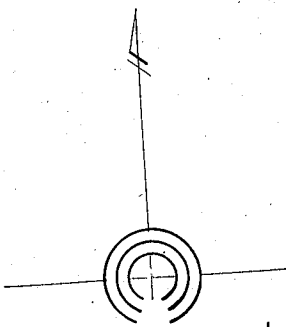




# 川崎区伊勢町 8 番換地図

縮尺 1:500

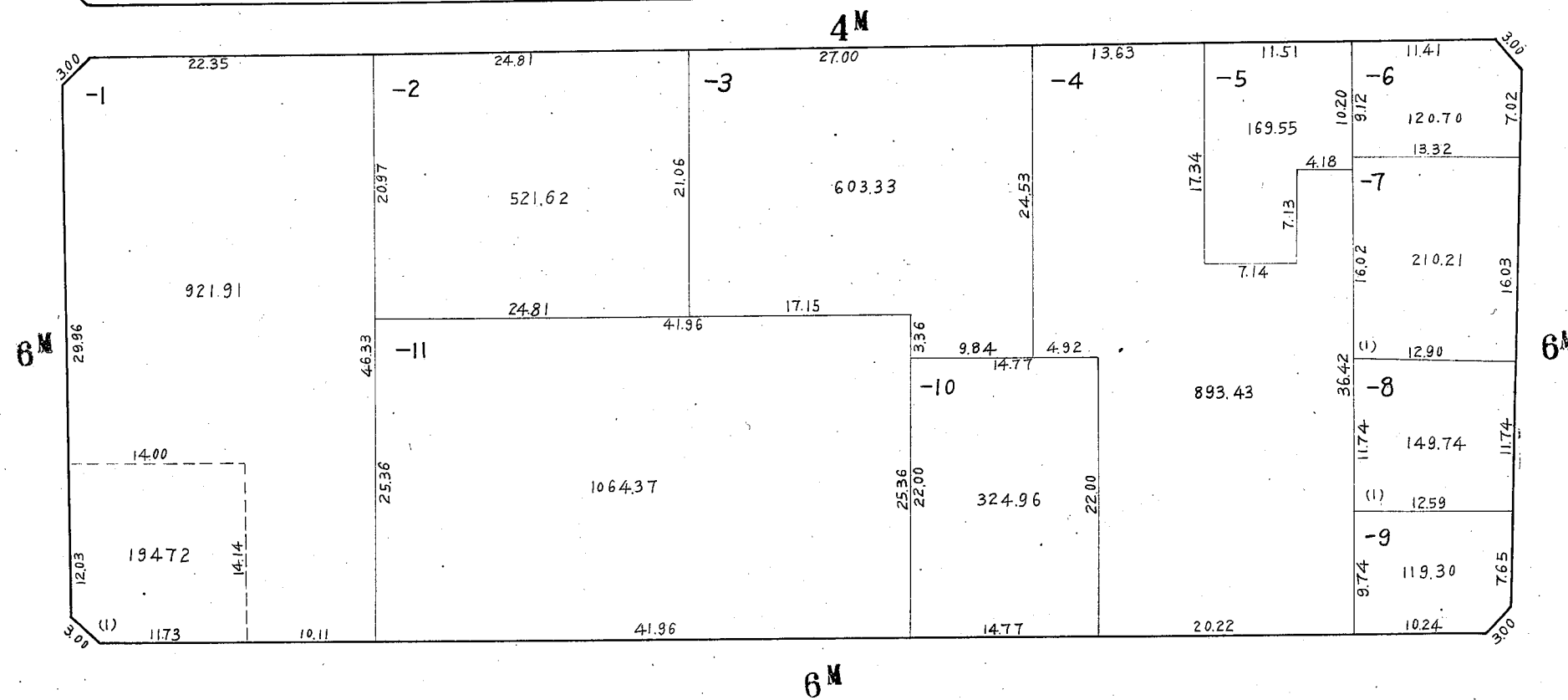
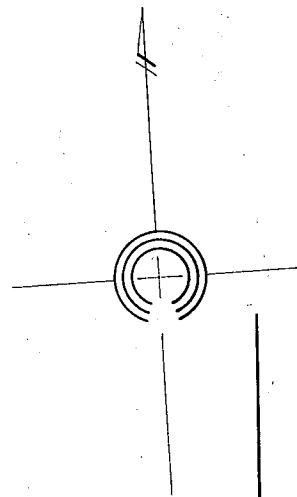
54



# 川崎区伊勢町 9 番換地図

縮尺 1:500

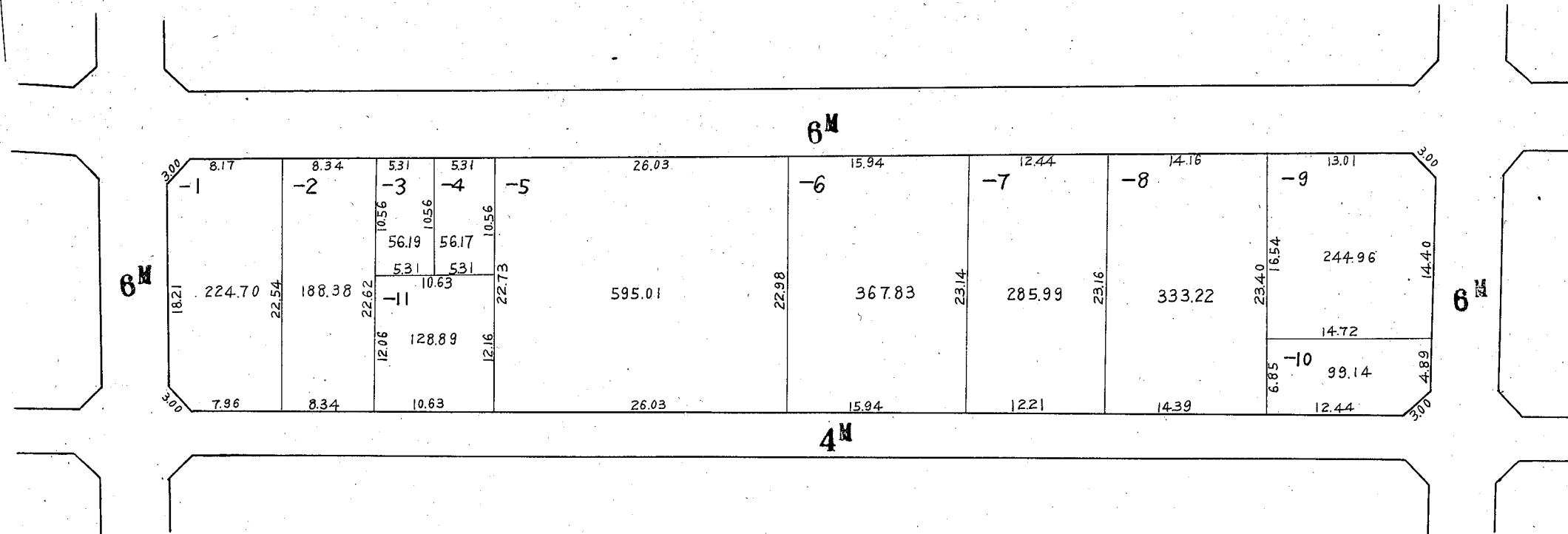
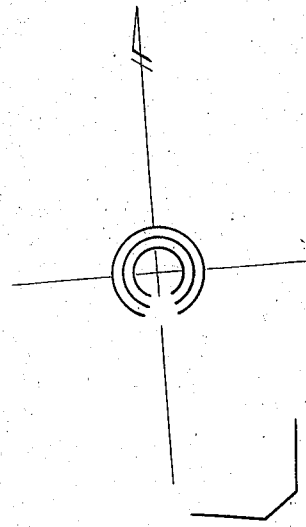
55



# 川崎区伊勢町 10 番換地図

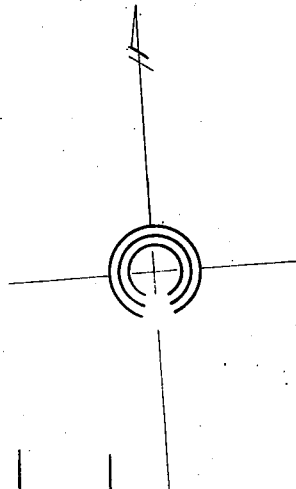
縮尺 1:500

56



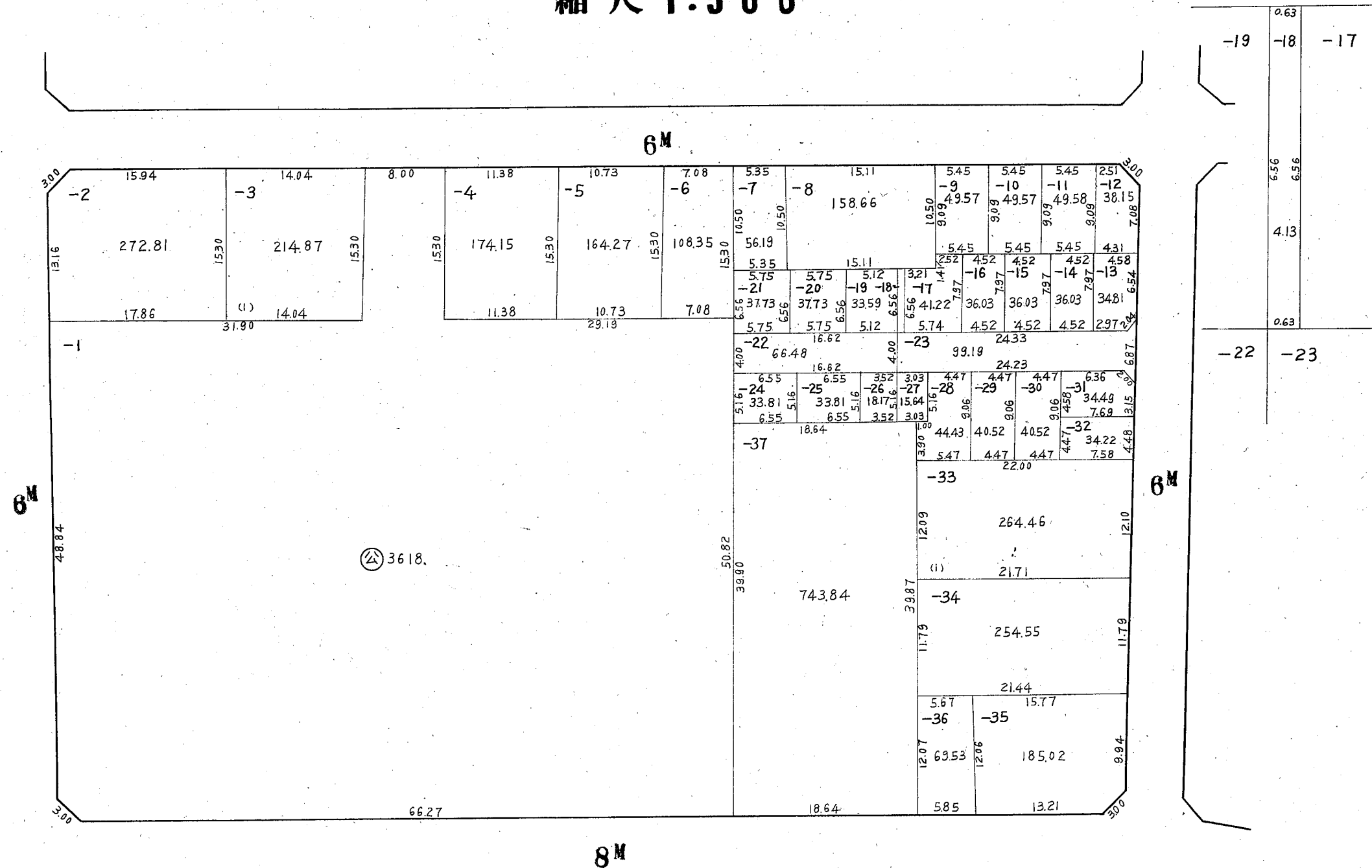
## 縮尺 1:500

57



縮尺 1:500

1:158

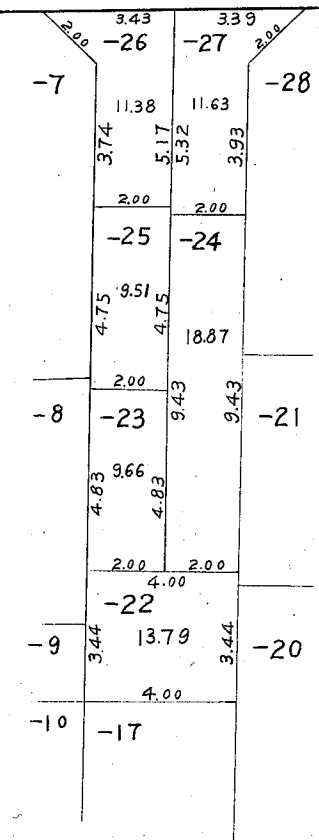
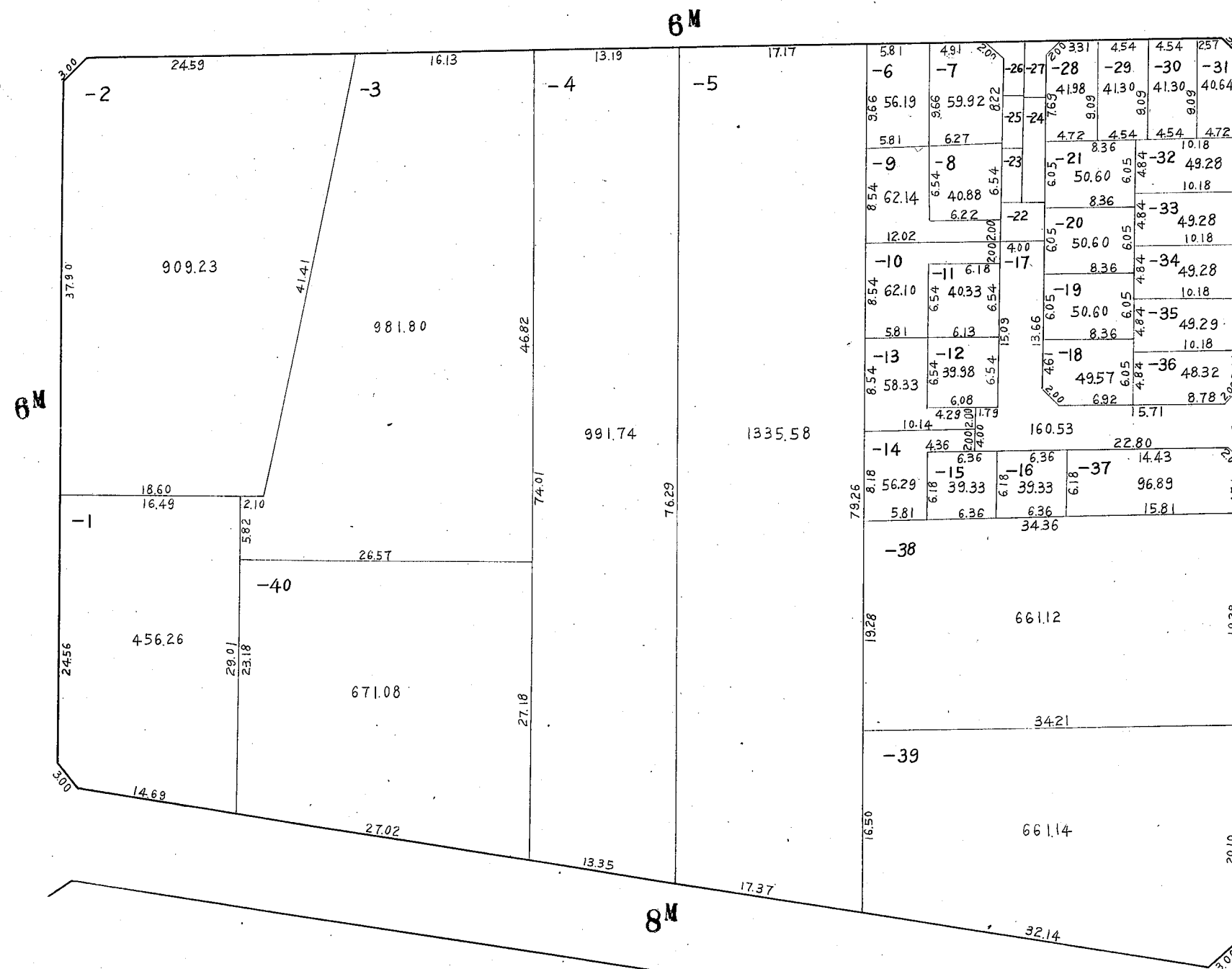
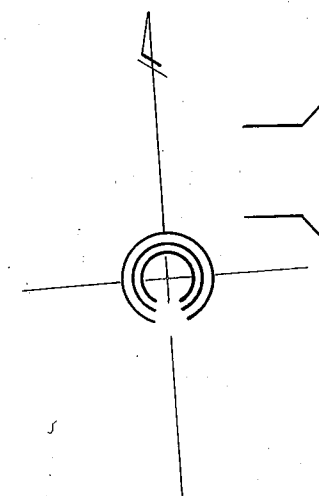


# 川崎区伊勢町 13 番換地図

## 縮尺 1:500

59

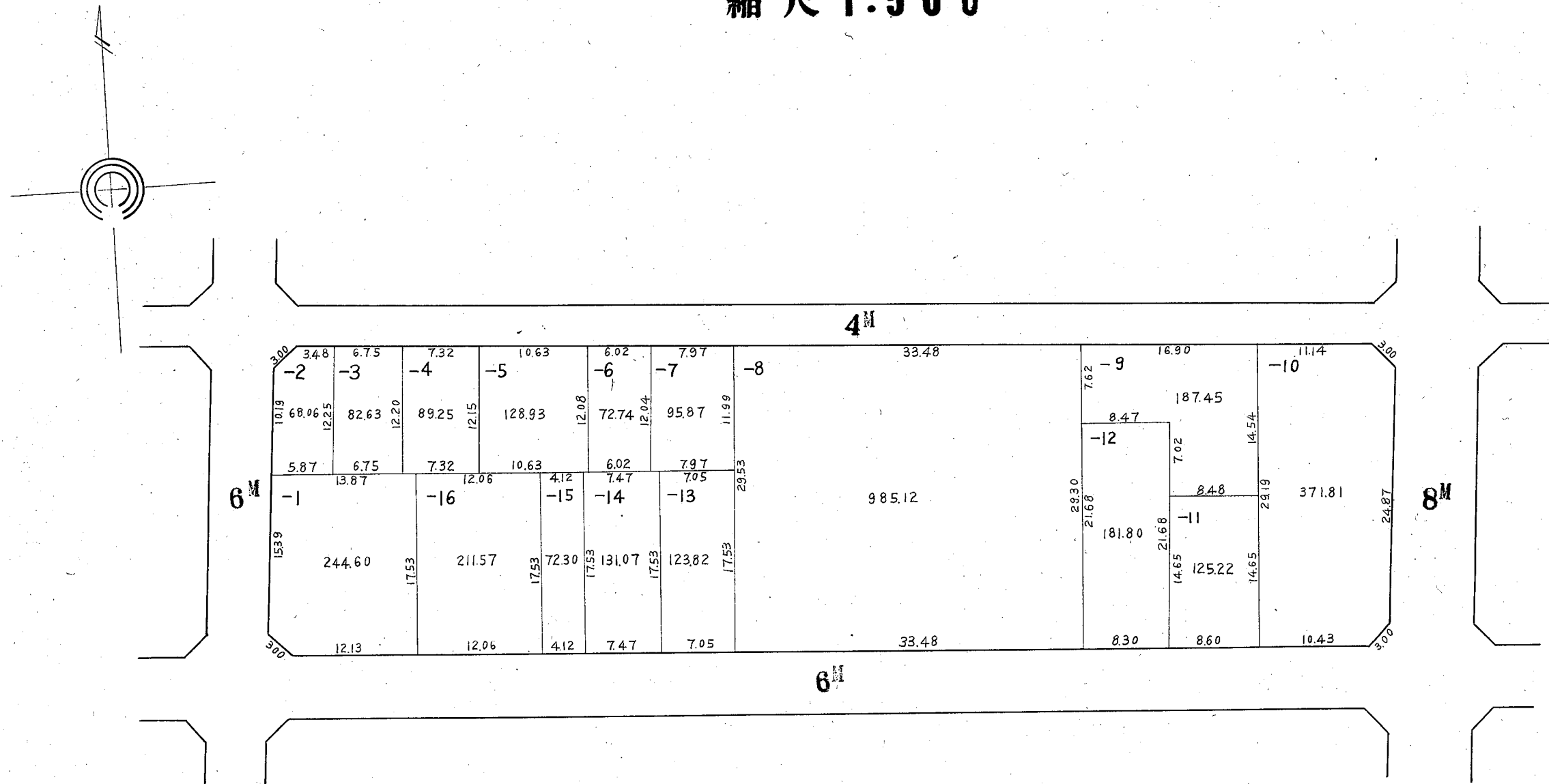
1:200





縮尺 1:500

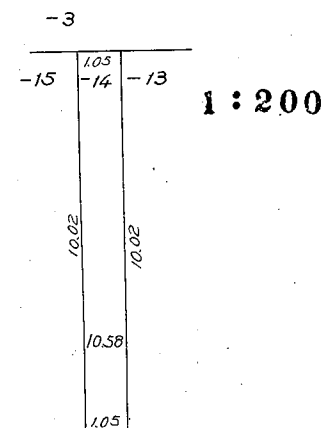
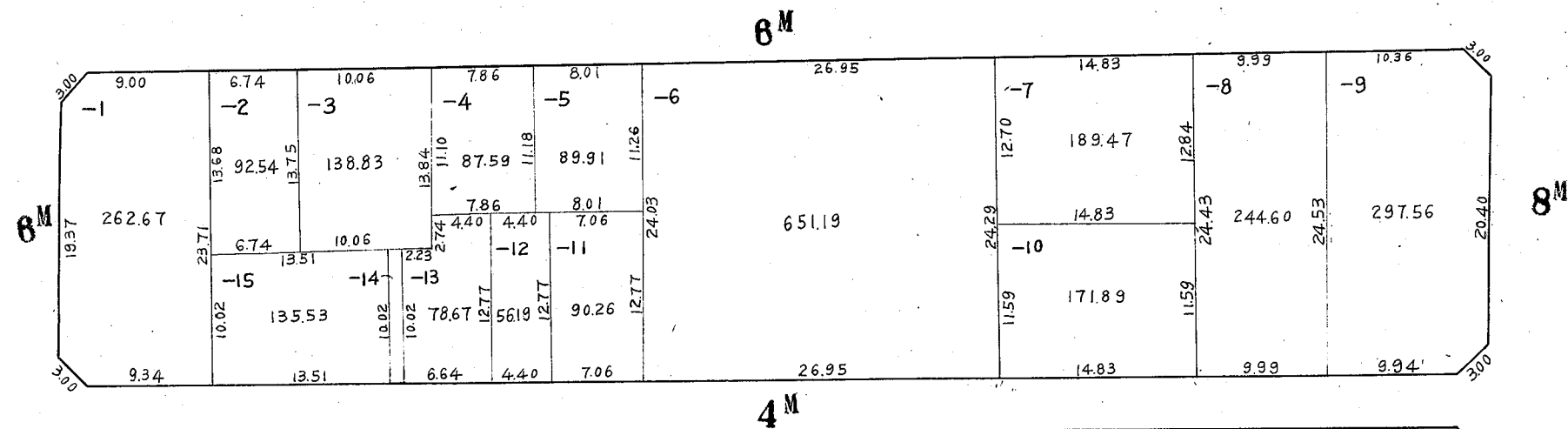
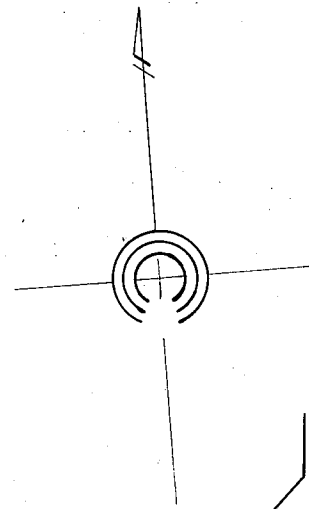
60



# 川崎区伊勢町 15 番換地図

縮尺 1:500

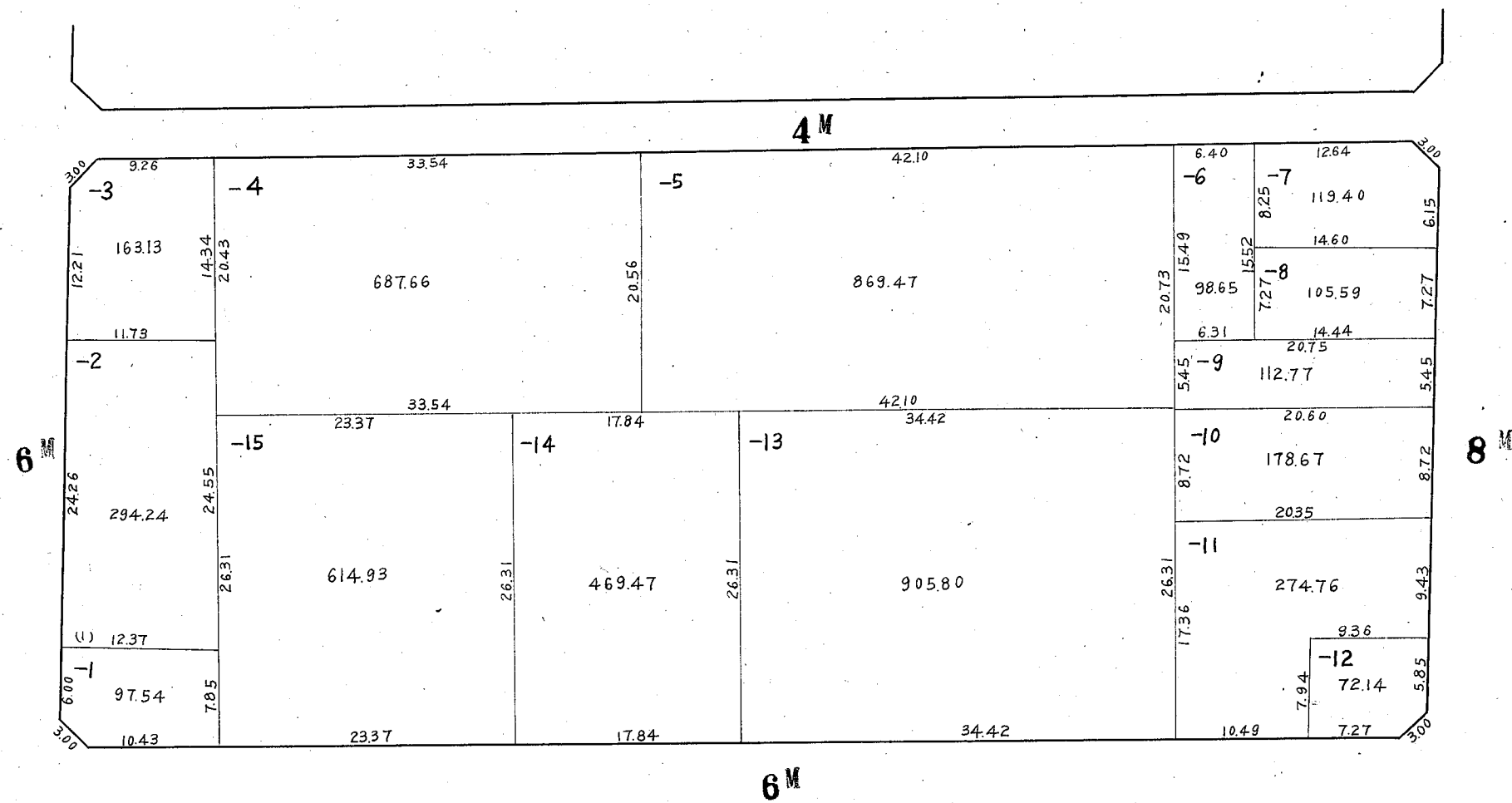
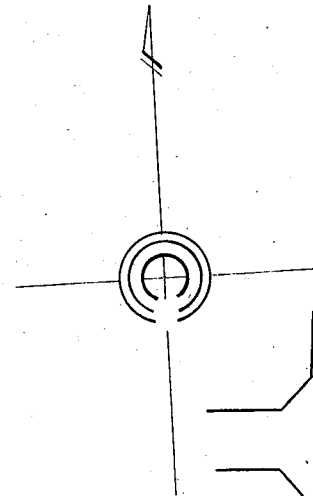
61



# 川崎区伊勢町 16 番換地図

縮尺 1:500

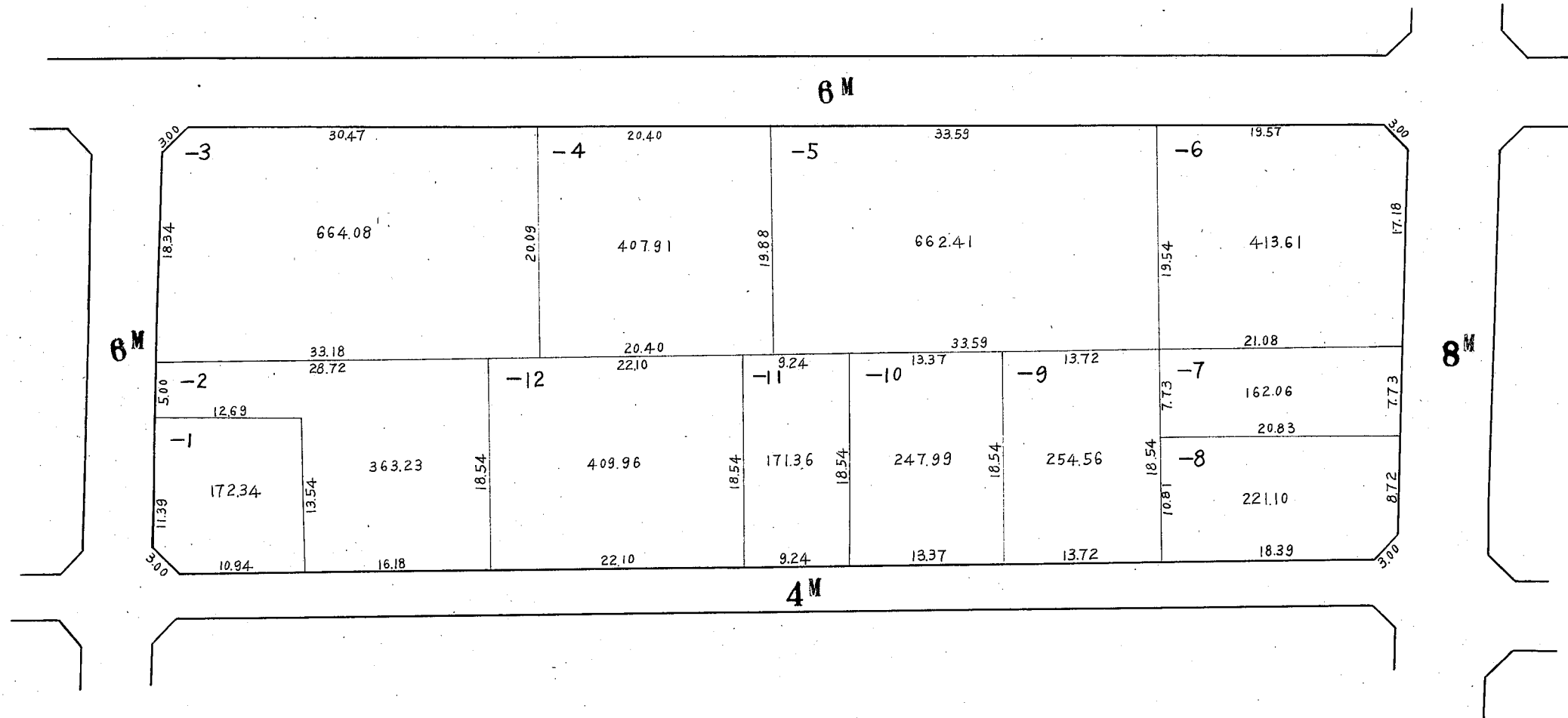
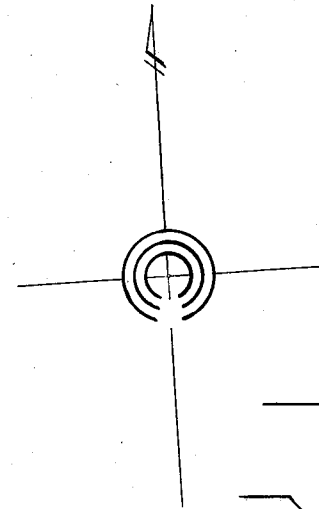
62



# 川崎区伊勢町 17 番換地図

縮尺 1:500

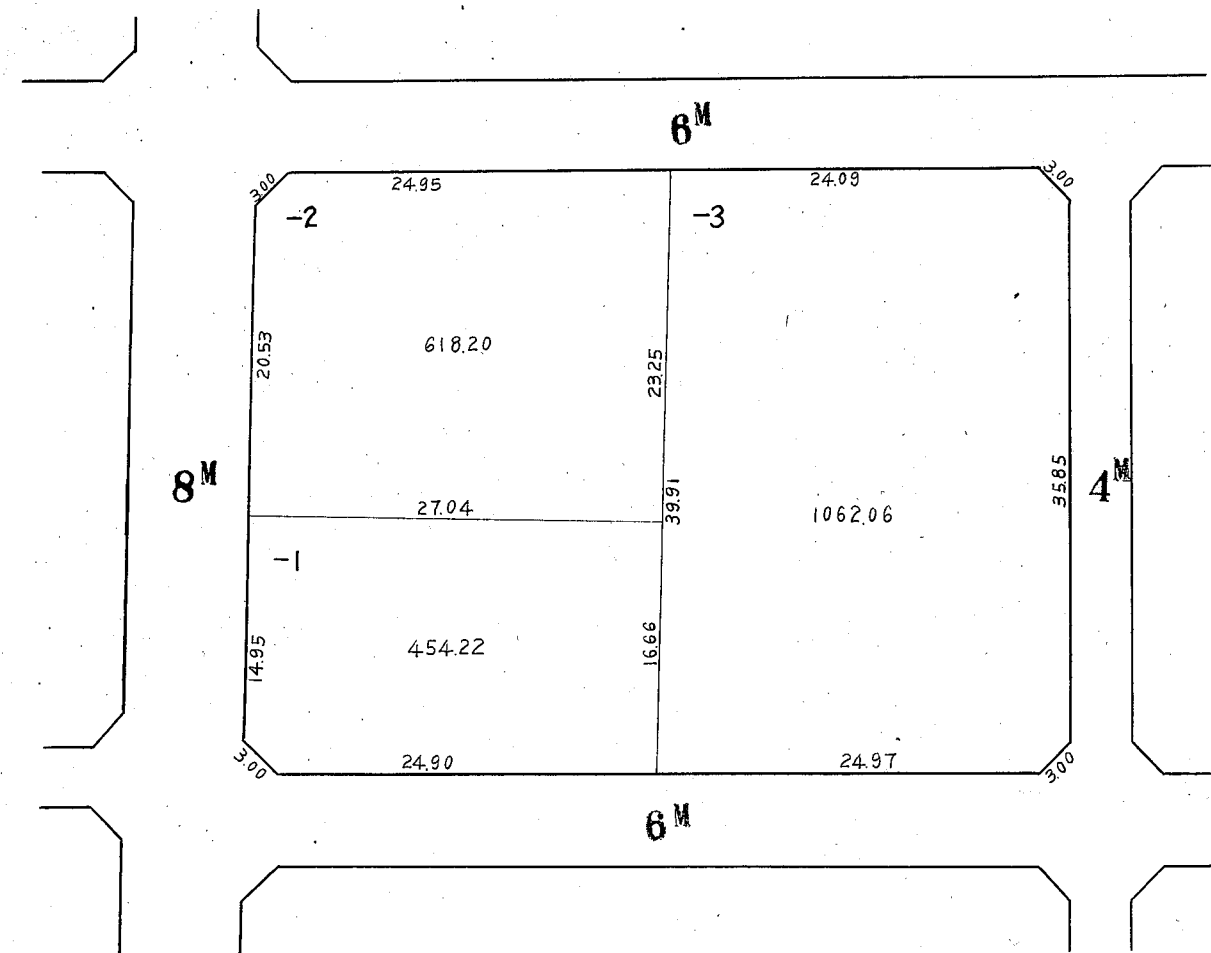
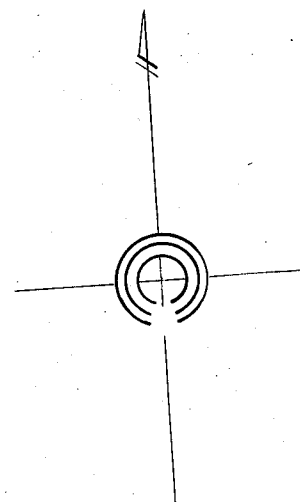
63



# 川崎区伊勢町 18 番換地図

縮尺 1:500

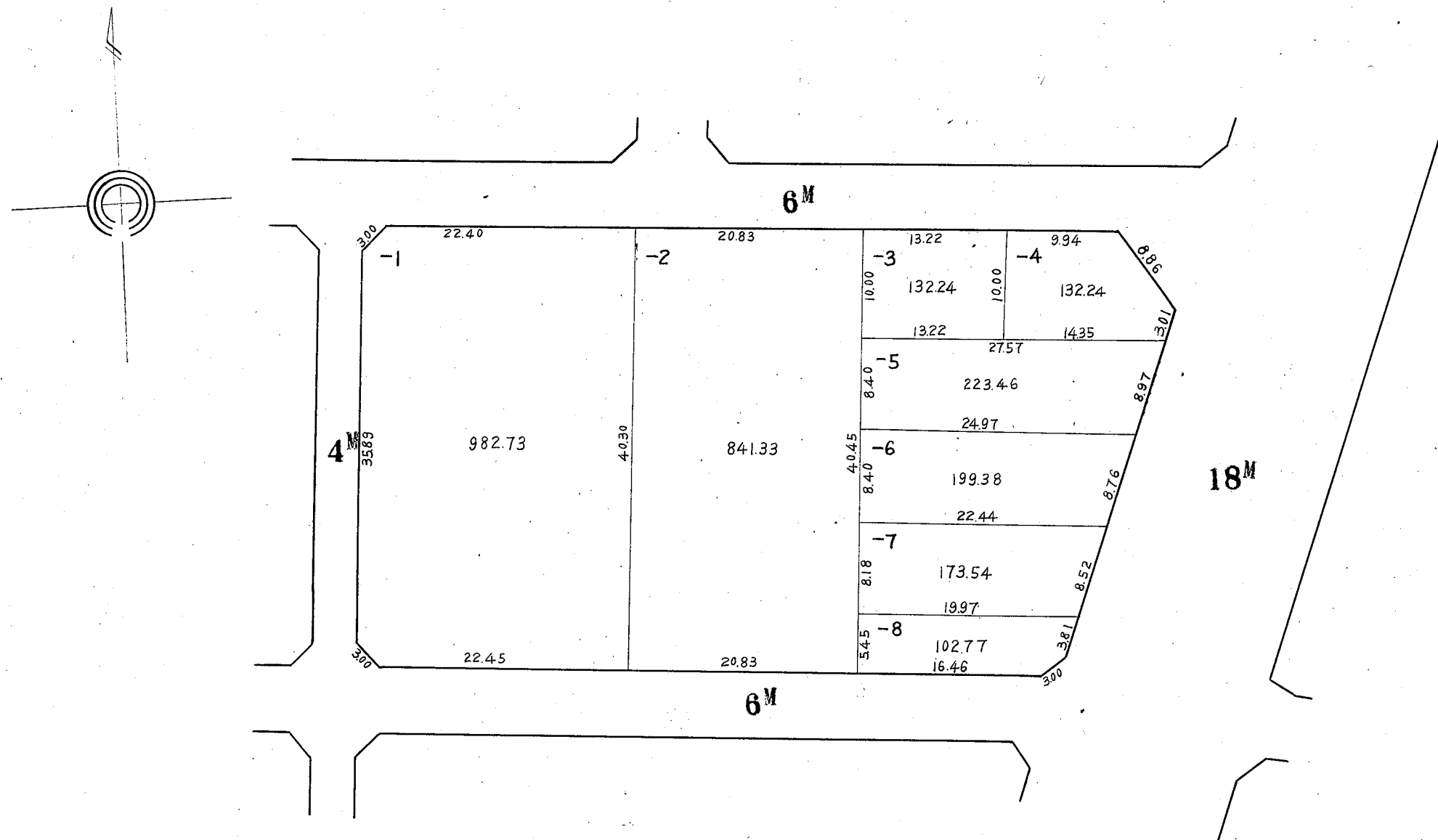
64



# 川崎区伊勢町19番換地図

縮尺 1:500

65

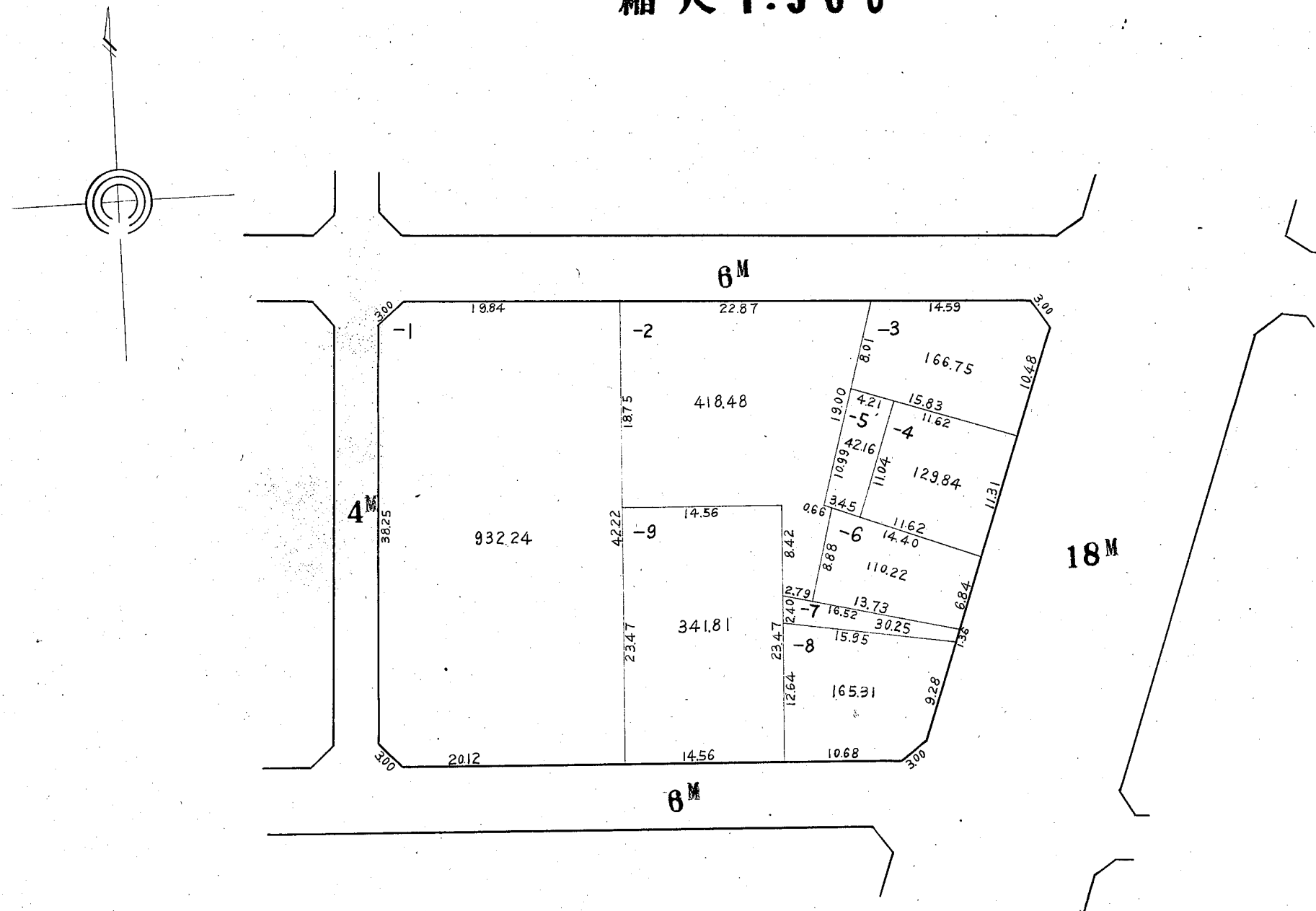




# 川崎区伊勢町 20 番換地図

縮尺 1:500

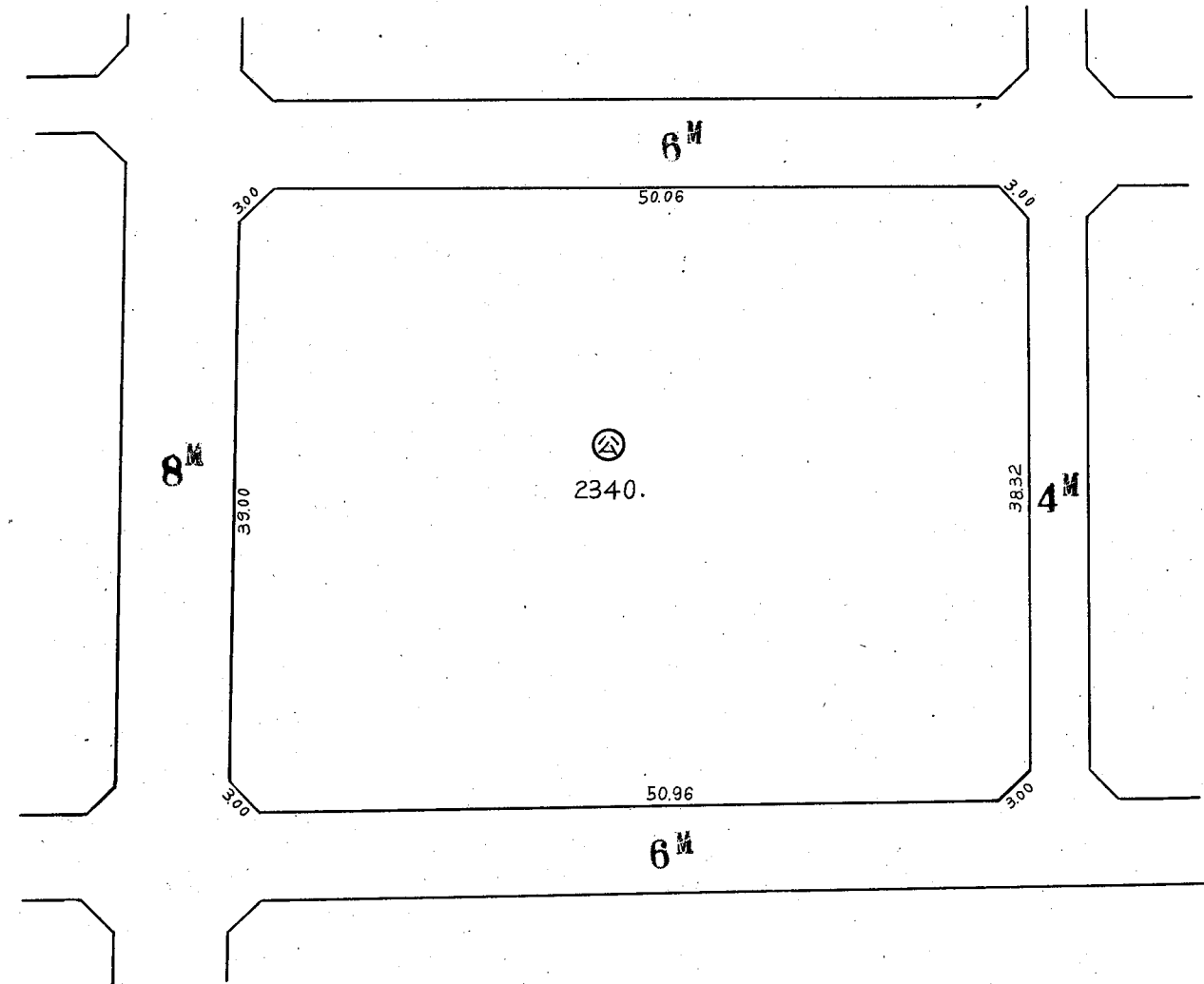
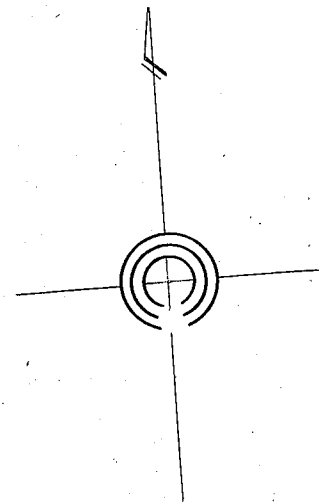
66



# 川崎区伊勢町 21 番換地図

67

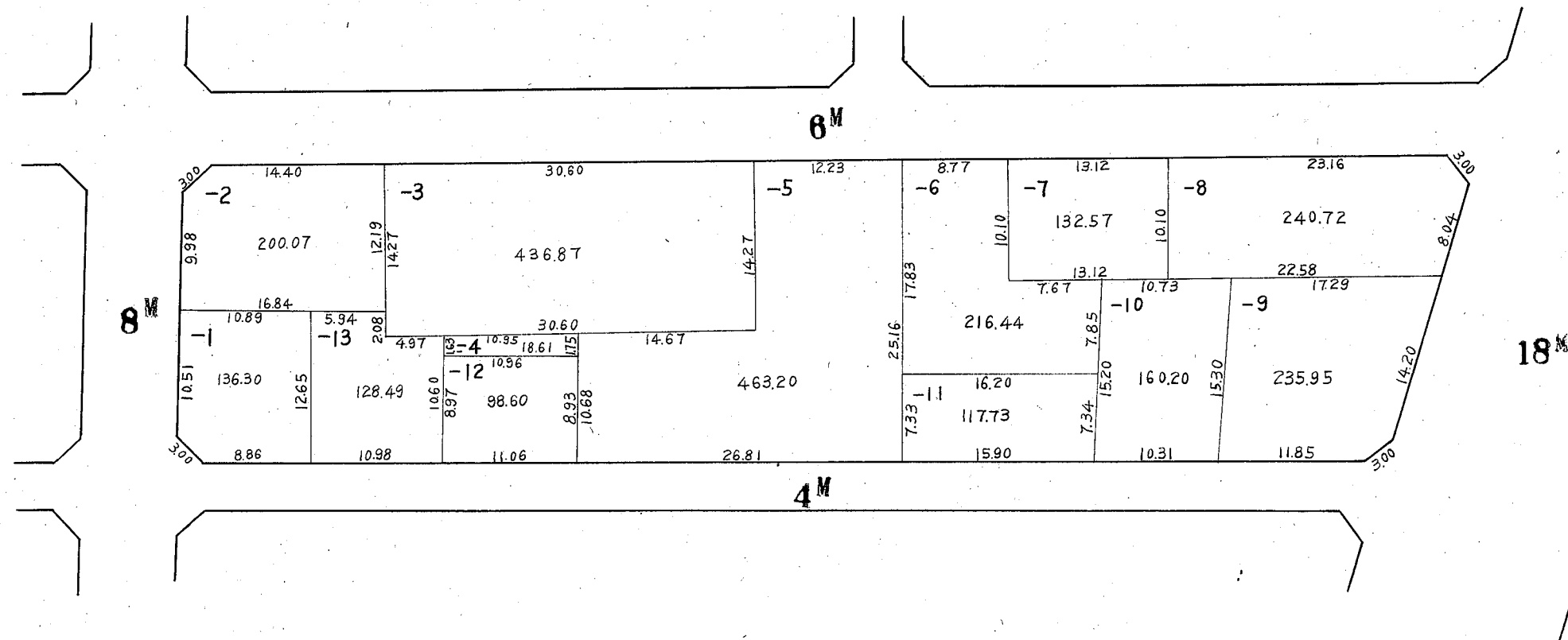
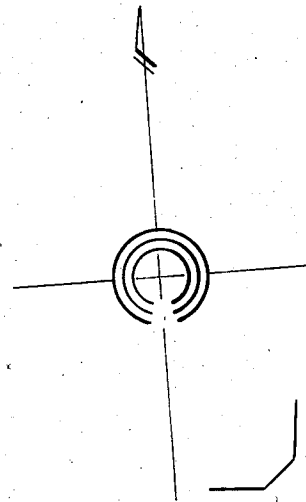
縮尺 1:500



# 川崎区伊勢町 22 番換地図

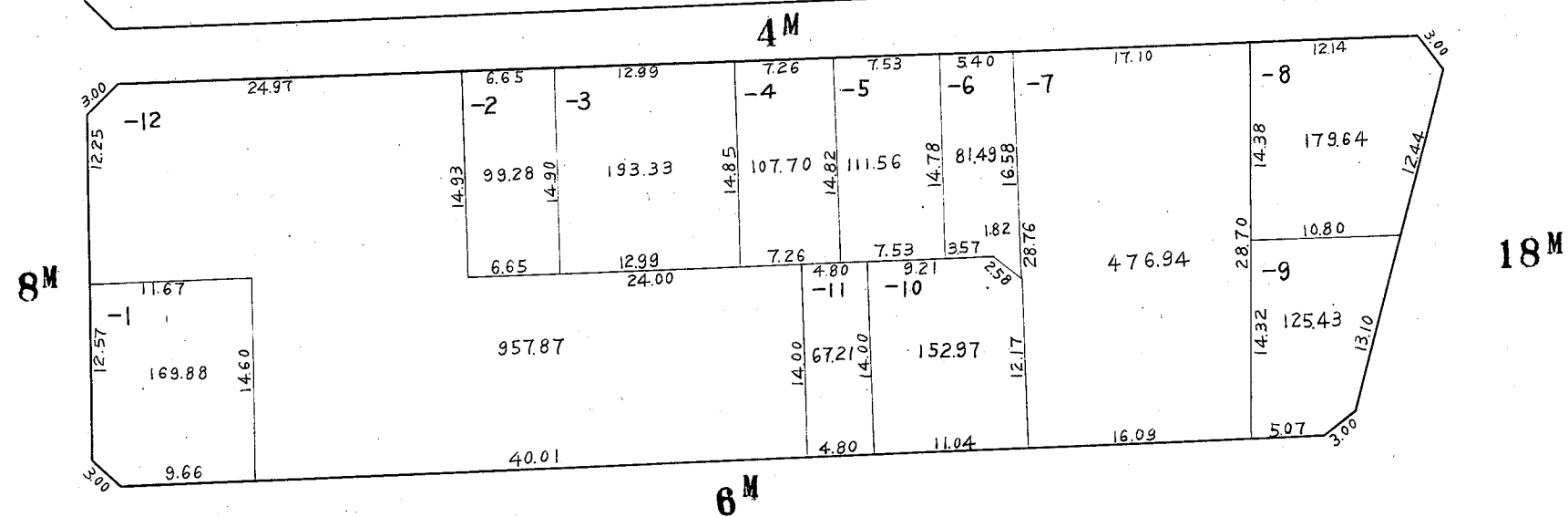
縮尺 1:500

68



## 縮尺 1:500

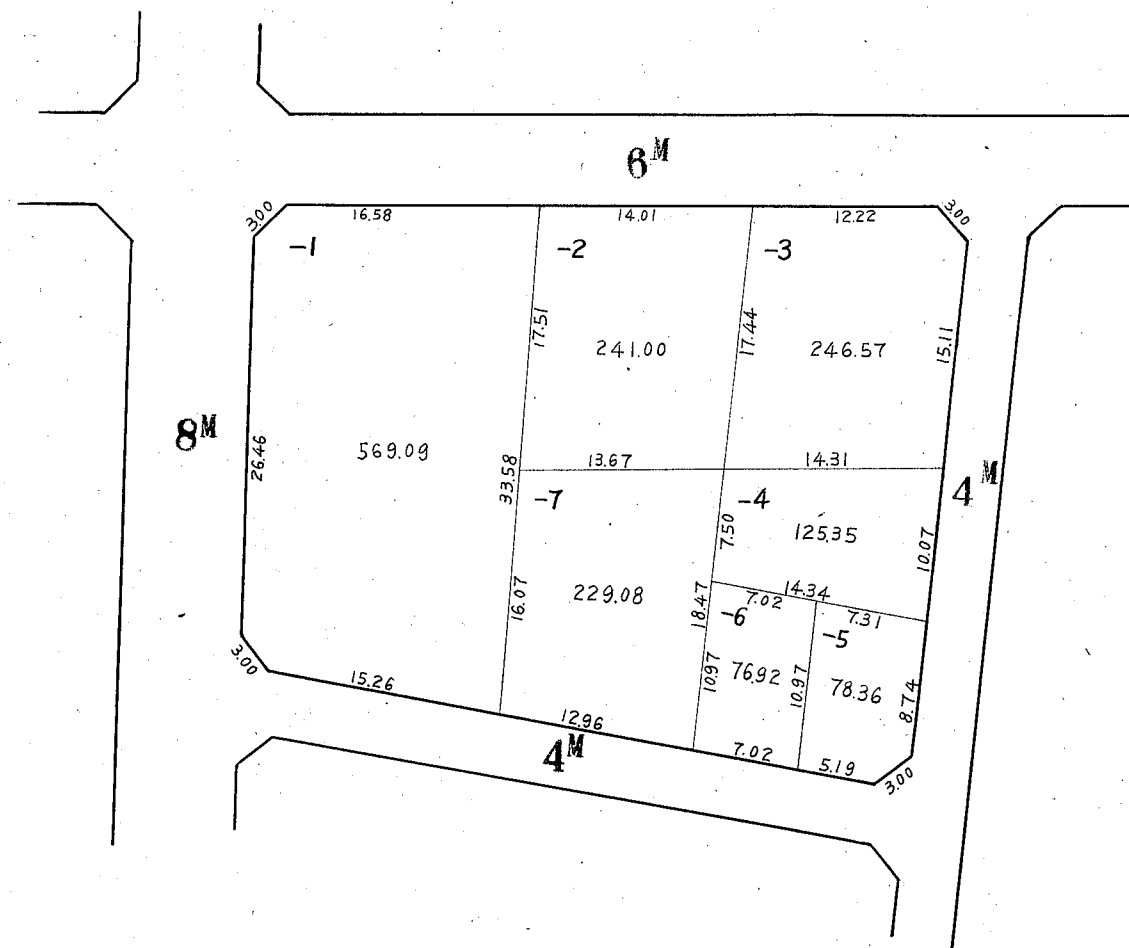
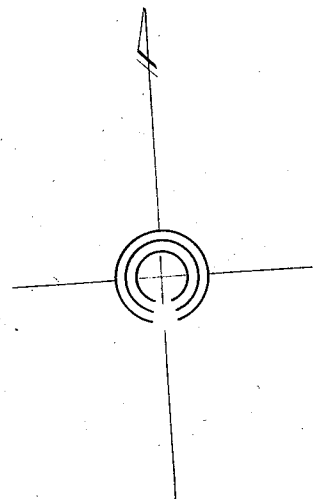
A hand-drawn diagram consisting of a central circle with a cross inside it. A vertical line passes through the center of the circle, extending upwards and downwards. The top end of this line is an arrowhead pointing upwards. A horizontal line also passes through the center of the circle, extending to the left and right. The lines are drawn with a simple, slightly irregular hand-drawn style.



# 川崎区伊勢町 24 番換地図

縮尺 1:500

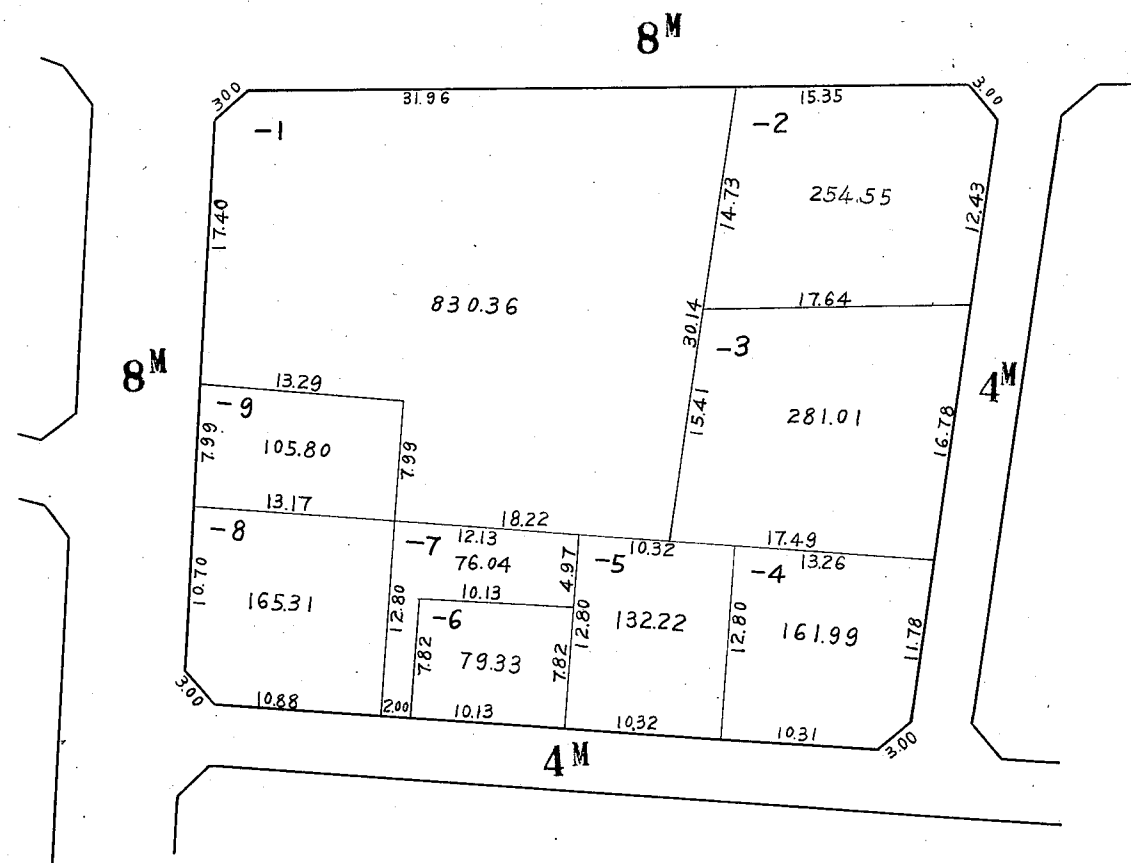
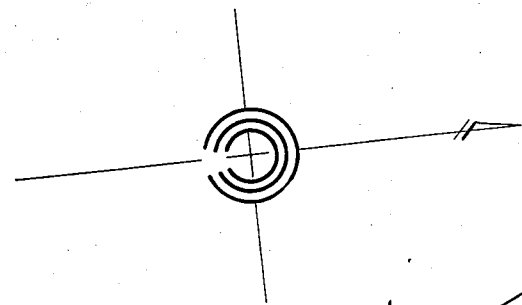
70



# 川崎区伊勢町 25 番換地図

縮尺 1:500

71





# 川崎区伊勢町26番換地図

縮尺 1:500

72

