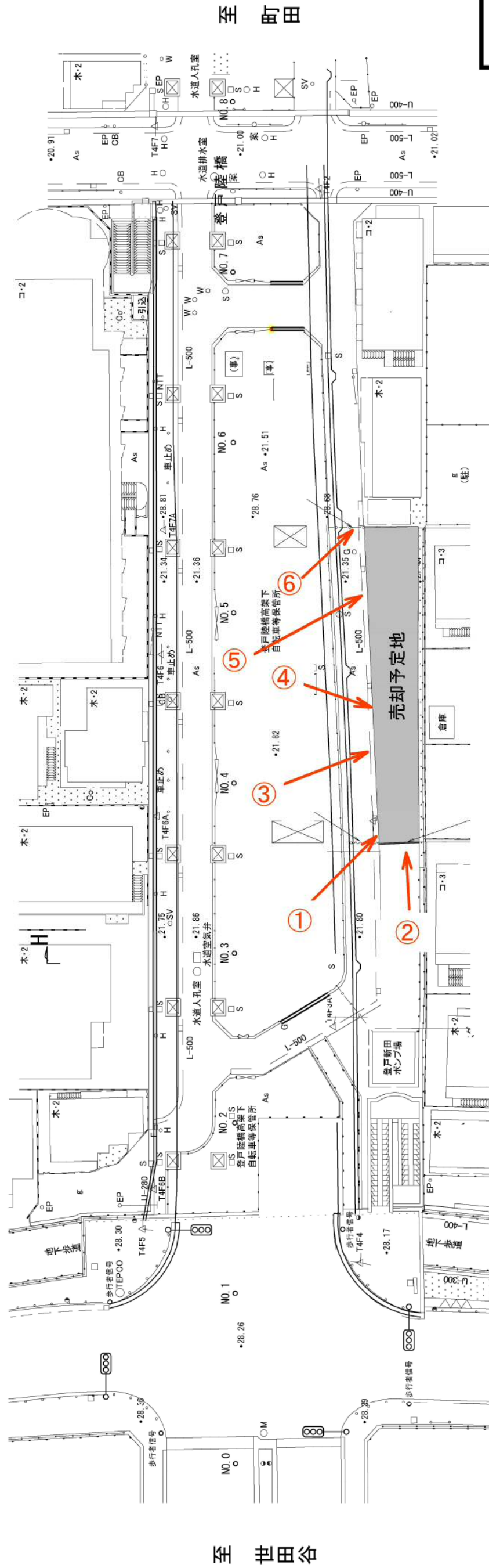
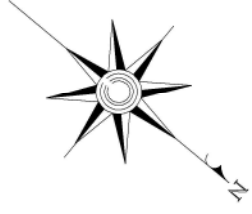


売却予定地 現況写真方向図



至 町田

至 世田谷

売却予定地

登戸陸橋高架下
自転車等保管所

登戸陸橋高架下
自転車等保管所

登戸新田
ポンプ場

倉庫

倉庫

倉庫

倉庫

倉庫

NO. 1

NO. 2

NO. 3

NO. 4

NO. 5

NO. 6

NO. 7

NO. 8

NO. 9

NO. 10

NO. 11

NO. 12

NO. 13

NO. 14

NO. 15

NO. 16

NO. 17

NO. 18

NO. 19

NO. 20

NO. 21

NO. 22

NO. 23

NO. 24

NO. 25

NO. 26

NO. 27

NO. 28

NO. 29

NO. 30

NO. 31

NO. 32

NO. 33

NO. 34

NO. 35

NO. 36

NO. 37

NO. 38

NO. 39

NO. 40

NO. 41

NO. 42

NO. 43

NO. 44

NO. 45

NO. 46

NO. 47

NO. 48

NO. 49

NO. 50

NO. 51

NO. 52

NO. 53

NO. 54

NO. 55

NO. 56

NO. 57

NO. 58

NO. 59

NO. 60

NO. 61

NO. 62

NO. 63

NO. 64

NO. 65

NO. 66

NO. 67

NO. 68

NO. 69

NO. 70

NO. 71

NO. 72

NO. 73

NO. 74

NO. 75

NO. 76

NO. 77

NO. 78

NO. 79

NO. 80

NO. 81

NO. 82

NO. 83

NO. 84

NO. 85

NO. 86

NO. 87

NO. 88

NO. 89

NO. 90

NO. 91

NO. 92

NO. 93

NO. 94

NO. 95

NO. 96

NO. 97

NO. 98

NO. 99

NO. 100

NO. 101

NO. 102

NO. 103

NO. 104

NO. 105

NO. 106

NO. 107

NO. 108

NO. 109

NO. 110

NO. 111

NO. 112

NO. 113

NO. 114

NO. 115

NO. 116

NO. 117

NO. 118

NO. 119

NO. 120

NO. 121

NO. 122

NO. 123

NO. 124

NO. 125

NO. 126

NO. 127

NO. 128

NO. 129

NO. 130

NO. 131

NO. 132

NO. 133

NO. 134

NO. 135

NO. 136

NO. 137

NO. 138

NO. 139

NO. 140

NO. 141

NO. 142

NO. 143

NO. 144

NO. 145

NO. 146

NO. 147

NO. 148

NO. 149

NO. 150

NO. 151

NO. 152

NO. 153

NO. 154

NO. 155

NO. 156

NO. 157

NO. 158

NO. 159

NO. 160

NO. 161

NO. 162

NO. 163

NO. 164

NO. 165

NO. 166

NO. 167

NO. 168

NO. 169

NO. 170

NO. 171

NO. 172

NO. 173

NO. 174

NO. 175

NO. 176

NO. 177

NO. 178

NO. 179

NO. 180

NO. 181

NO. 182

NO. 183

NO. 184

NO. 185

NO. 186

NO. 187

NO. 188

NO. 189

NO. 190

NO. 191

NO. 192

NO. 193

NO. 194

NO. 195

NO. 196

NO. 197

NO. 198

NO. 199

NO. 200

NO. 201

NO. 202

NO. 203

NO. 204

NO. 205

NO. 206

NO. 207

NO. 208

NO. 209

NO. 210

NO. 211

NO. 212

NO. 213

NO. 214

NO. 215

NO. 216

NO. 217

NO. 218

NO. 219

NO. 220

NO. 221

NO. 222

NO. 223

NO. 224

NO. 225

NO. 226

NO. 227

NO. 228

NO. 229

NO. 230

NO. 231

NO. 232

NO. 233

NO. 234

NO. 235

NO. 236

NO. 237

NO. 238

NO. 239

NO. 240

NO. 241

NO. 242

NO. 243

NO. 244

NO. 245

NO. 246

NO. 247

NO. 248

NO. 249

NO. 250

NO. 251

NO. 252

NO. 253

NO. 254

NO. 255

NO. 256

NO. 257

NO. 258

NO. 259

NO. 260

NO. 261

NO. 262

NO. 263

NO. 264

NO. 265

NO. 266

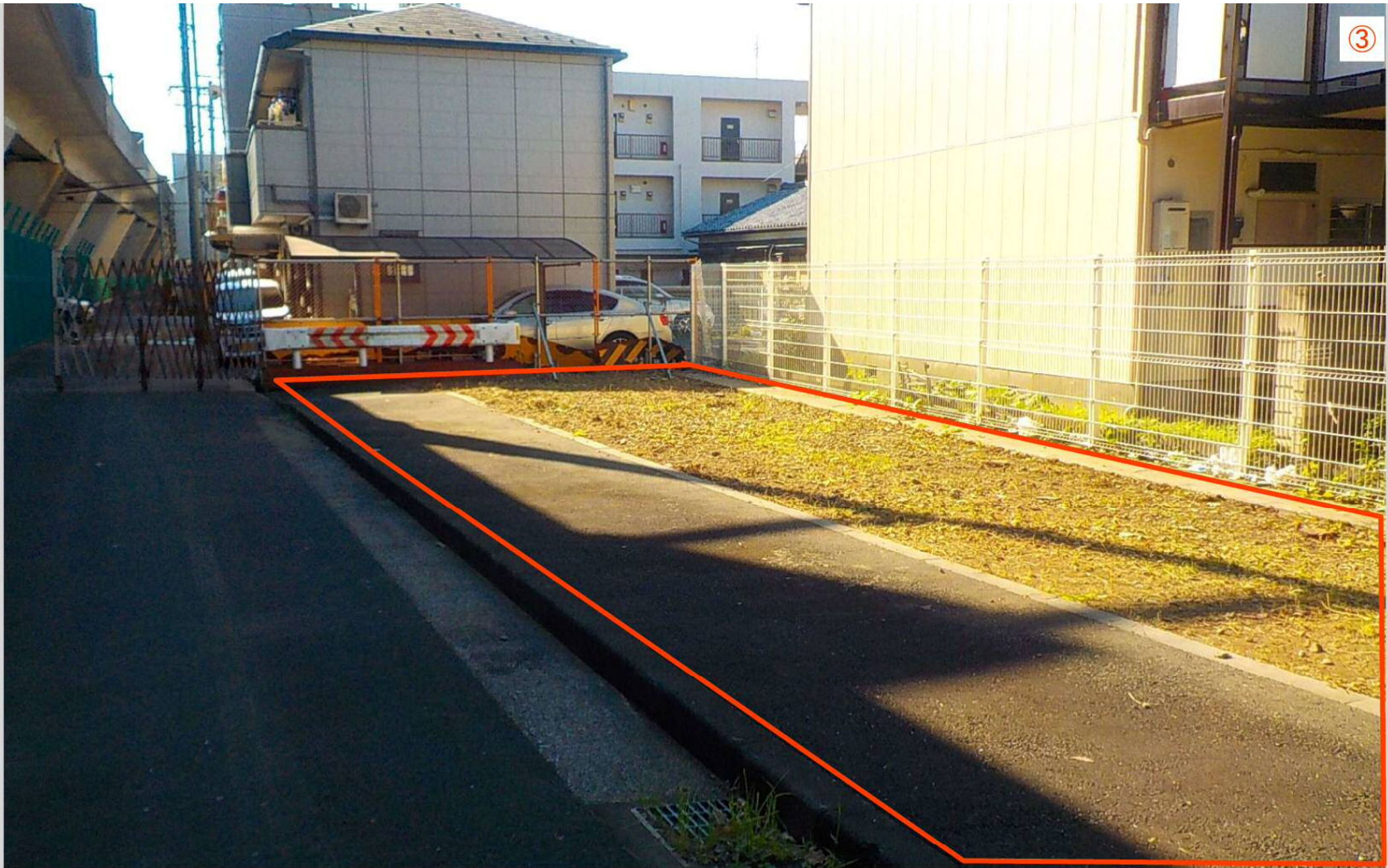
NO. 267

NO. 268

NO. 269













所有権移転後に撤去