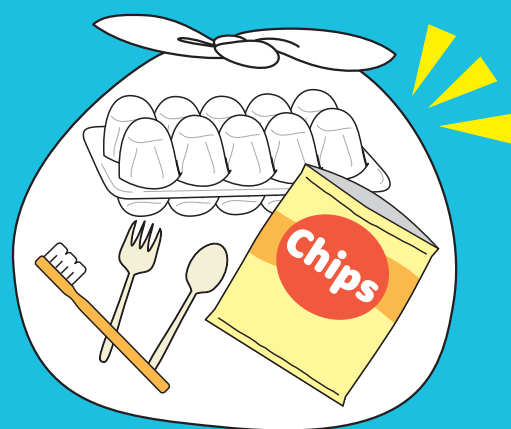


To those living in Saiwai and Nakahara Wards

# Plastic waste sorting made easy!



Until now,  
**plastic products**  
have been collected  
and incinerated as  
general waste, but from  
now on they will be  
**collected together with  
plastic containers and  
packaging and recycled.**

**April 2025**  
Plastic resource  
collection begins




Kawasaki 3R Promotion Character  
Kawarun

Look on the reverse side for details

# The start of resource collection

- From April 2025, please put plastic products and plastic containers and packaging in **one bag**.
- The collection day and location will remain the same for plastic containers and packaging, but the item name will be changed to **plastic resources**.
- This began in Kawasaki-ku in April 2024, and will be expanded to include **Saiwai and Nakahara wards** in April 2025, and all of Kawasaki in 2026.

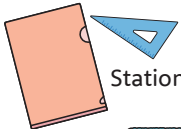
## Q What kind of things can I dispose of?

- A** Plastic products and containers/packaging that are **less than 50 cm** on one side. These can be disposed of even if there is no plastic mark .

### Examples



Containers and packaging



Stationery



Sponges

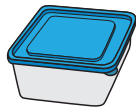
You can now recycle these as resources.



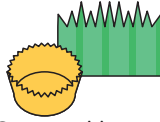
Toothbrushes  
(electric toothbrushes are not included)



Cutlery



Storage containers



Cups and bento box dividers

\*Please put large items (over 50 cm) in the bulky waste.

\*Please put PET bottles out on the day of the collection for empty cans and PET bottles.

## Q What about items with metal parts?

- A** If the metal parts cannot be removed, you can leave them on when disposing.

### Examples



Clothespins



Buckets



\*Please remove anything that can be removed, such as the lead from a ballpoint pen.

## Q Can't we just put everything in general trash?

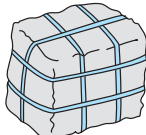
- A** When regular trash is burned, it releases a lot of greenhouse gases that cause global warming. At present, 80% of these are caused by burning plastic. Even if it is dirty or has a strong smell, we will collect it and deal with it at our facilities, so if you are unsure, please dispose of the garbage as plastic resources.



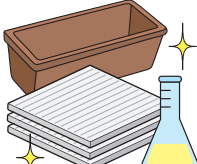
Manual sorting process

## Q What happens to the resources that are collected?

- A** They are recycled into things like plastic boards used for outdoor billboards, planters, fertilizer, and chemical materials that are used to make fiber.



Combined



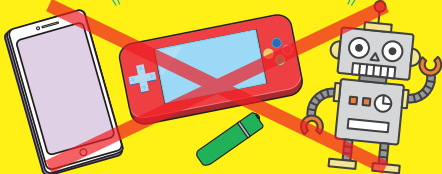
Processed

## The following items cannot be disposed of as they may cause injury, fire or damage to the facilities.

Please comply for safety reasons!



Lithium-ion batteries can cause fires!



Anything that runs on electricity or batteries (dry cell batteries, rechargeable batteries)

Workers will get hurt!



Lighters, knives, syringes, etc.

Details will be announced in the leaflet How to Separate Recyclable and Garbage Waste to be distributed around March.

It will arrive by postal mail.



Inquiries

Nakahara Waste Collection Office  
Waste Reduction Promotion Section

TEL:044-411-9220 FAX:044-434-7336  
TEL:044-200-2580 FAX:044-200-3923

(Created in October 2024)