

## Guidebook to Free Childcare and Early Child Education

**general information: hotline on free kindergarten and daycare**  
TEL 044-246-2025  
(10 am to 7 pm weekdays)

For questions about getting authorized for free daycare, inquire at the ward office Children and Families Section, or the District Health and Social Welfare Station, where you live (weekdays 8:30 am to 5 pm)

Kawasaki Ward Office Children and Families Section	TEL 044-201-3219
Daishi District Health and Social Welfare Station, Children and Families Coordinator	TEL 044-271-0150
Tajima District Health and Social Welfare Station, Children and Families Coordinator	TEL 044-322-1999
Saiwai Ward Office Children and Families Section	TEL 044-556-6688
Nakahara Ward Office Children and Families Section	TEL 044-744-3263
Takatsu Ward Office Children and Families Section	TEL 044-861-3250
Miyamae Ward Office Children and Families Section	TEL 044-856-3258
Tama Ward Office Children and Families Section	TEL 044-935-3297
Asao Ward Office Children and Families Section	TEL 044-965-5158

**For questions about the system (weekdays 8:30am to 5pm)**

(authorized day care centers, spot day care)  
Child Development Bureau, Nursery Projects Department, Nursery Section 1  
TEL 044-200-2662

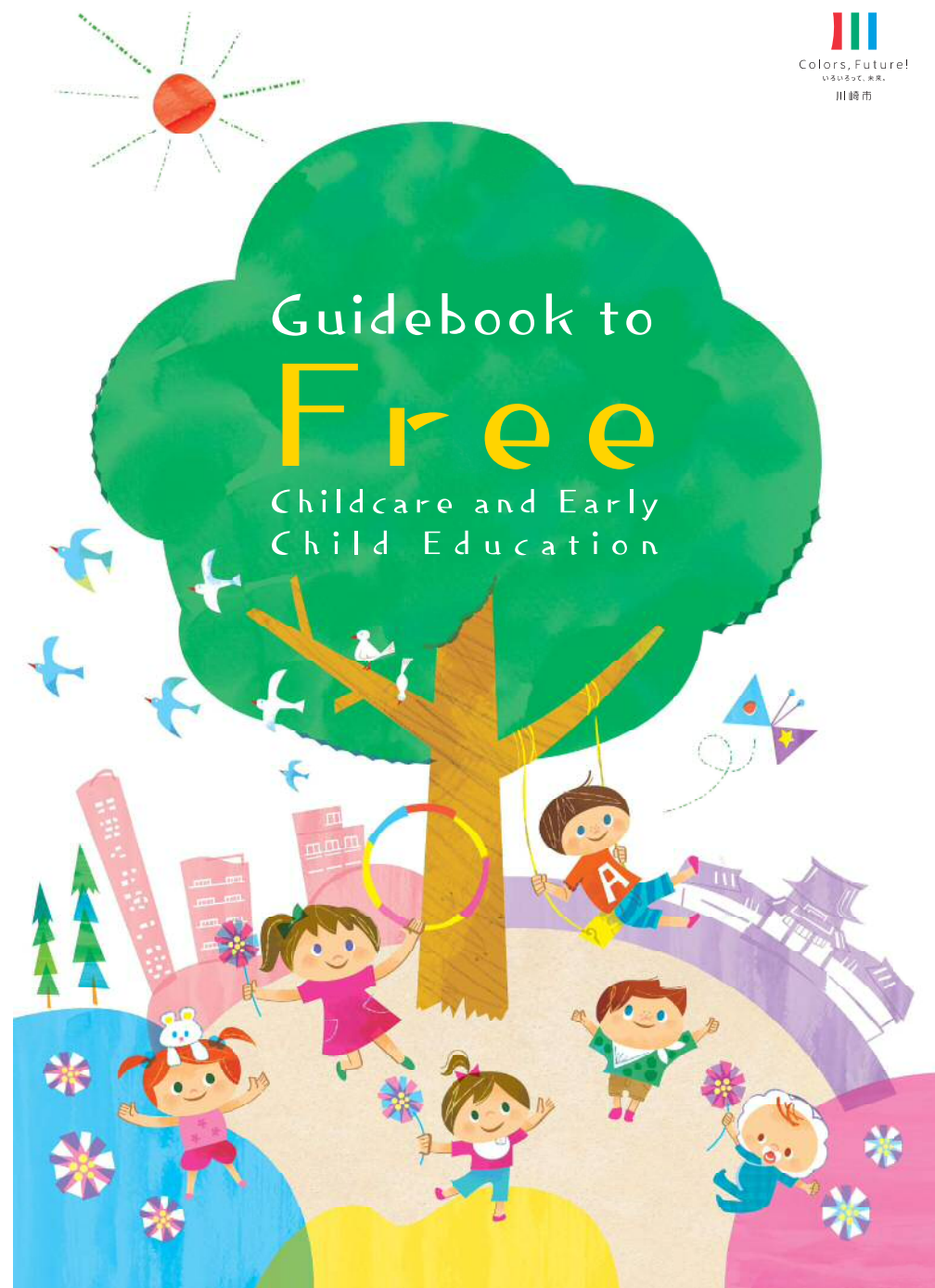
(regional daycare enterprises, Kawasaki authorized nursery schools, daycare for ill or recovering children, regional nursery schools, work-place childcare facilities (non-authorized), babysitters)  
Child Development Bureau, Nursery Projects Department, Nursery Section 2  
TEL 044-200-3128

(Application for enrollment, Daycare fee collection, Short-term daycare for kids on the waiting list)  
Child Development Bureau, Child Care Promotion Department, Nursery Policy Section  
TEL 044-200-3727

(kindergartens, kindergartens with extended-hours childcare)  
Child Development Bureau, Child Care Promotion Department, early childhood education tanto TEL 044-200-3179

(fureai kosodate support)  
Child Development Bureau, General Affairs Department, Planning Section  
TEL 044-200-2848

3rd Edition, April 2020



## Kindergartens, day care centers, etc. are going to be free of charge

for children in these two categories

all children from 3 to 5 years of age



and children from 0 to 2 years of age  
living in households that are exempt from residence tax.

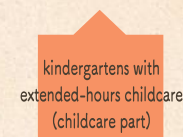


In order to reduce the economic burden of raising children, from October 1st, 2019 kindergartens, day care centers, kindergartens with extended childcare hours, etc. will basically be free for all children from 3 to 5 years of age, and also for children from 0 to 2 years of age who live in families that are exempt from residence tax.

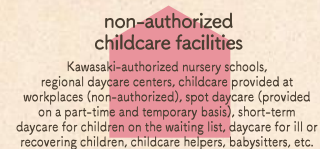
The exact amount of subsidy available will depend factors such as the age of the child and type of facility used. In some cases, families will have to apply (or apply again) for the money. Certain kinds of childcare-related expenses, such as those for childcare outside of the standard hours, or lunch money, are not covered by this subsidy. You can get some of the details about this program by calling the Municipal Information Hotline:Hotline on Free Kindergarten and Daycare at 044-246-2025.

The subsidy program is different for different kinds of facilities.  
There are basically 3 kinds of cases

CASE 1 → P.4 - 5



CASE 2 → P.6 - 7



CASE 3 → P.8 - 9



※Expenses for childhood development support for children with disabilities are also covered by this program. (For three years from April 1st of the year the child turns age 3.)

### Expenses not covered by this program

expenses other than the basis fees are not covered.

- ①Money for meals (main dish and side dishes)
- ②Fees for childcare extending beyond the standard hours
- ③Expenses for daily supplies, school supplies, school events, uniforms, school bus, etc. collected by the facility.



# CASE 1

Those using authorized day care centers, kindergartens with extended-hours childcare (childcare part), regional daycare enterprises etc.

Authorized day care centers, kindergartens with extended-hours childcare (childcare part), regional daycare enterprises (small-scale childcare enterprises, family-style childcare enterprises, childcare provided at workplaces by an enterprise) will be free for all children from age 3 to 5 years. They will also be free for children from age 0 to 2 years living in households which are exempt from residence tax.

Applicable facilities

authorized daycare centers

kindergartens with extended-hours childcare (childcare part)

regional daycare enterprises  
small-scale childcare enterprises, family-style childcare enterprises, childcare provided at workplaces by an enterprise

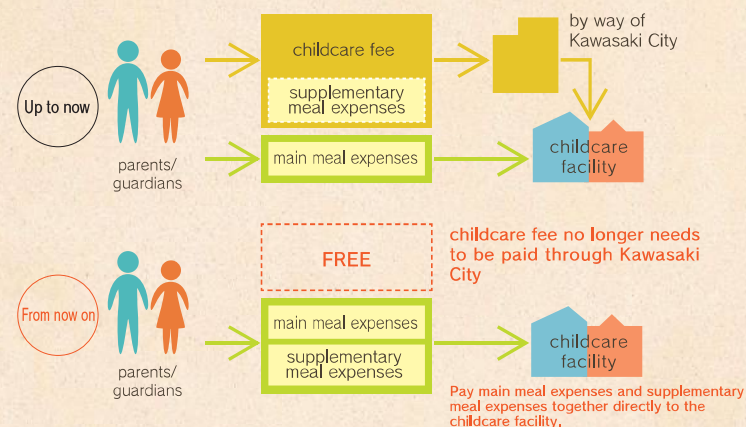


To enter these facilities children were already certified as requiring day care, so there is no need for them to apply for such certification again.

※ For more about 'certified as requiring daycare', please see Q.5 on p.11.

## Notes on Case 1

◎The way meal expenses are handled for 3 – 5 year-olds will change.



\* Meal expenses differ from facility to facility.

\* Households that are exempt from paying the supplementary meal expenses (e.g. households receiving public assistance, households earning less than ¥3,600,000 per year, etc.) will be receiving a notice from the City of Kawasaki.

◎If a child is using more than one kind of applicable facility at a time, the subsidy will not apply to both. (With the exception of children receiving child development support or the like.)

(Example) For a child that is going to an authorized day care center AND at the same time receiving day care for sick children, the day care for sick children will not be free.

◎For kindergartens with extended-hours childcare (childcare part), expenses set by each facility to be collected directly from the parents will not be free.

◆For daycare centers run by enterprises also, the basic fees are free. For details please inquire at the facility you are interested in.

## CASE 2 Those using non-authorized childcare facilities

For all children of age 3 to 5 years who require childcare, fees at non-authorized childcare facilities will be free up to a limit of ¥37,000 per month. For children of age 0 to 2 years requiring childcare who live in households which are exempt from residence tax, such fees will be free up to a limit of ¥42,000 per month.

Applicable facilities

Kawasaki-authorized nursery schools, regional daycare centers, childcare provided at workplaces (non-authorized), spot daycare (provided on a part-time and temporary basis), short-term daycare for children on the waiting list, daycare for ill or recovering children, childcare helpers, babysitters

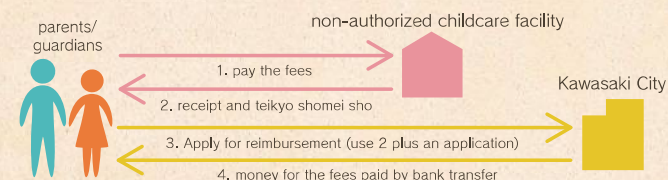


### Notes on Case 2

◎ In order to use the subsidies for these facilities, families will have to apply (or, apply again) for authorization for benefits for daycare.

#### ◎ How to be reimbursed for money paid to these facilities

For now, pay the fees directly to the facilities you are using, just as before, and get from them a receipt and a teikyo shomei sho, which is a form that gives details about the services provided. Submit your receipt and teikyo shomei sho along with an invoice to Kawasaki City. After the documents are reviewed, the money will be paid into the designated bank account in the name of the applicant.



※Different kinds of facilities have different payment methods.

※Those participating in the mutual help program called fureai kosodate service do not normally receive a receipt and teikyo shomei sho; service providers instead produce a 'report of activities' (katsudo hokoku). So, when applying for reimbursement in step 3 above, this report may be submitted in place of the receipt and teikyo shomei sho.

◎ Facilities the fees for which can be reimbursed under this program are listed on Kawasaki City's homepage. Please note that fees for the use of facilities not listed there CANNOT be reimbursed.



※To find out whether or not a facility outside of Kawasaki City is covered by this program, please check the website of the local government of the area the facility is located in.

◎ Fees for lunches, snacks, etc. for daycare for ill or recovering children are not reimbursable.

※'Daycare for ill or recovering children' refers to a system for providing care for children who, due to illness, cannot go to an ordinary day care center or the like.

◎ Fees for the fureai kosodate service will not be reimbursed if the service is being used only for transporting a child to and from daycare.

※Fureai kosodate service is a mutual-aid enterprise in which registered members help each other with childcare-related tasks.

# CASE 3 Those using kindergartens or kindergartens with extended-hours childcare (kindergarten part)

Applicable facilities

kindergartens

kindergartens with extended-hours childcare (kindergarten part)

For all children of age 3 to 5 years going to kindergarten or kindergarten with extended-hours childcare (kindergarten part), the kindergarten fee will be free.

For those children who have been certified as requiring daycare, in addition to the kindergarten fee depending on the number of days of childcare needed, up to about ¥11,300 per month of childcare fees will be free.

## All children 3 to 5 years old



To qualify for free childcare, children need to be certified as requiring daycare.

※ For more about 'certified as requiring daycare', please see Q.5 on p.11.

## Notes on Case 3

◎ Fees in excess of the upper limit of ¥25,700 per month (matriculation fee, designated parental contribution, etc.) are to be borne by the parents or guardians.

◎ Expenses collected by the facility for things such as textbooks, school bus, lunches, school events, etc. are not covered by this program.

◎ Fees for additional daycare for children 3 to 5 years old certified as requiring daycare are covered up to about ¥450 per day, or ¥11,300 per month.

※ For children under 3 years of age (or up to the March 31st after their 3rd birthday) living in households exempt from residence tax who are certified as requiring daycare, the coverage limit is ¥16,300 per month.

※ The amount paid will depend on the number of days the child needs daycare.

All children  
3 to 5 years old certified as  
requiring daycare



up to ¥11,300 per month FREE  
(about ¥450 per day)

Children under 3 years old (until the March  
31st after the child's 3rd birthday) in  
households exempt from residence tax  
who are certified as requiring daycare



up to ¥16,300 per month FREE  
(about ¥450 per day)

◎ Even children who are in kindergarten for less than 8 hours a day on weekdays (including extra childcare time), or for less than 200 days a year, or are in non-authorized childcare facilities, etc. can be covered by these subsidies.

※ The upper limit would be ¥11,300/month (or ¥16,300/month) minus the eligible fees for childcare not being used.

# Q&A

## Q1 We have a child eligible for free childcare. What do we have to do?

If your child is currently going to an authorized daycare center or a kindergarten with extended-hours childcare (childcare part), you don't need to do anything. If your child is attending kindergarten, going to a non-authorized childcare facility or something like that, you need to apply for eligibility for free childcare: kosodate no tame no shisetsu to riyo kyufu nintei.



## Q2 We're going to apply for eligibility for free childcare. What sort of documents will we need?

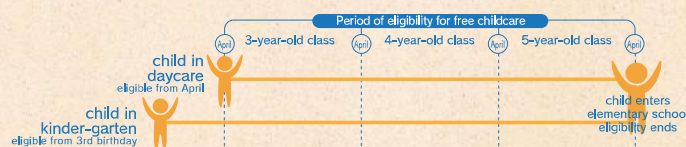
You will need the application form for the kosodate no tame no shisetsu to riyo kyufu nintei, and documents that can confirm why you need to use a child care facility (for example, your certificate of employment).

For details about how to apply, please check the Kawasaki City website.



## Q3 If children become eligible for free childcare on their third birthday, do they lose eligibility the day they become 6 years old?

Basically, a child is eligible for free childcare for the three-year period before they enter elementary school. So, even if they turn 3 in the middle of a school year, it is the following April that they become eligible for free childcare. However, if the child is going to kindergarten, they become eligible for the subsidy on their third birthday (but only children in households exempt from residence tax are eligible for free extended-time daycare before the following April). Furthermore, even if the child turns 6 in the middle of a school year, they remain eligible for free childcare until the following March.



## Q4 We couldn't get into an authorized daycare center, so we are using a non-authorized childcare facility. Do we need to apply for eligibility for free childcare again?

Yes, please apply again. However, if on or after April of 2019 you successfully applied for kyoiku - kosodate kyufu nintei\*, then instead of your certificate of employment and so forth you can submit a copy of the Certificate of Authorization you received from the City. Note that this way of handling things may change in the future, so please check the Kawasaki City website for the most recent information.

\* 'authorization for subsidy', is the name that was given up to now for the permission that Kawasaki City gave to enroll a child in an authorized daycare center or the like after confirming a household's actual need to use such a facility (due to work, school, illness etc. of parents/guardians). From October the system changed to the new one of free childcare and early childhood education, so the name of this official confirmation of eligibility has also changed.

## Q5 Now that childcare is free, why do we have to apply for eligibility for it?

Making childcare free at non-authorized childcare facilities is meant as an alternative measure for people who had applied to an authorized day care center but could not get in. So, to make the requirements the same for everyone, anyone hoping to get reimbursed for childcare expenses has to apply for the money.

Reasons for need for daycare/childcare	Time frame
1 For those who work over 64 hours per month ※	Period during which daycare is required, until child enrolls in elementary school
2 Pregnancy/birth	Approximately two months around (before/after) estimated due date
3 Parent/guardian illness or injury, or physical/mental disability	Period during which daycare is required, until child enrolls in elementary school
4 Providing nursing care for relatives living together or in the hospital long-term	Period during which daycare is required, until child enrolls in elementary school
5 Recovering from disaster	Through period by which full recovery is expected
6 Job searching or preparing to start a business	Within two months
7 Attending post-graduation vocational training or university with a view to finding work	Period of study and vocational school or university
8 Threat of abuse or domestic violence	Period during which daycare is required, until child enrolls in elementary school
9 Other cases determined by the mayor's office to be similar to 1-8 above, and required for reasons of the welfare of the child including parent/guardian's inability to care for said child,	Period during which daycare is required, until child enrolls in elementary school

※ Regardless of how many hours you work in a single day or how many days per month you work, if you work 64 hours or more per month then you are eligible for daycare.



## Q6 We used spot daycare. How can we get those fees reimbursed?

Basically reimbursement is supposed to be for people who have been certified as eligible for free childcare, but you can apply to the new free childcare center. Send your receipt, etc. and after reviewing your documents they will (if accepted) send the money to the bank account you designate. Note that payments are made every quarter, so you apply with three months of fees at a time. For details see the website of Kawasaki City.

※ In addition to spot daycare, fees for Kawasaki authorized nursery schools, regional daycare centers, childcare provided at workplaces (non-authorized), short-term daycare for children on the waiting list, daycare for ill or recovering children, childcare helpers, babysitters, etc. would all be handled the same way.

## Q7 Can fees for early childhood education facilities that have not been recognized as kindergartens be paid for under this program?

If such facilities have been registered as non-authorized childcare facilities, they can be covered under this program. Please inquire at the facility you are interested in as to whether it has been so registered. Note that you will still need to apply for eligibility for free childcare.

## Q8 We have two children (aged 5 and 2) in an authorized day care center. Up to now the fee for the second child has been at the 'second-child' rate. What happens now?

As before, the second child will be paying the 'second-child' rate.

