

Creating a map with your ideas!

What sightseeing spots, shops and local restaurants do you like best? Post your favorite photos online with the hashtags below!

#KawasakiDeSky
#空港の向こう側には川崎

みんなのアイデアがマップをつくる!!

川崎駅周辺のマップづくりに参加しませんか。このマップは、川崎に通学する留学生や海外出身の社会人、地元の方と一緒に、作り上げました。これからも、国内外からの来訪者の方、地元の方のご意見を参考にマップを更新していきたいと思います。あなたのお気に入りの一枚をハッシュタグを付けて、SNSに投稿しよう!

#KawasakiDeSky
#空港の向こう側には川崎



川崎市 KAWASAKI CITY

Free Map



Tourist Information

Kawasaki City Tourist Information
川崎市観光案内所

English and Chinese speaking staff are available to help you plan out your trip and show you the best of Kawasaki.

Discover Kawasaki Website
<http://www.k-kankou.jp/travelkawasaki/>
Facebook @KawasakiCity.en
Twitter @Kawasaki_City90
Instagram @kawasaki_city

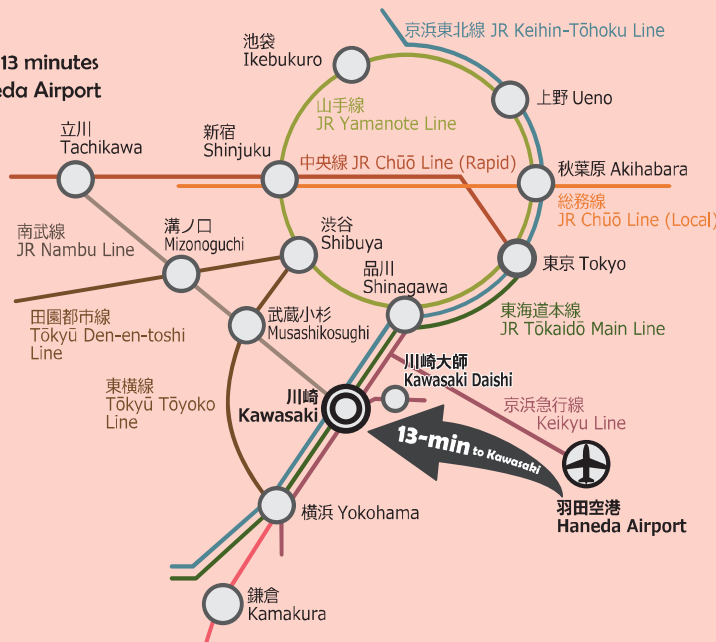
Getting to Kawasaki

<Keikyu Line>
Arrive at Kawasaki Station in 13 minutes on the Keikyu Line from Haneda Airport

<JR Line>
• 18 min to Tokyo Station
• 9 min to Shinagawa Station
• 8 min to Yokohama Station

<Bus>
• 48 min to Haneda Airport
• Long-distance coach from Kawasaki to major cities

<Taxi>
• 20 min to Haneda Airport



4 Must-Do Experiences

KAWASAKI



2-to-3-hour Model Plan

Shop

Find everything you want and need around the station

Stroll through Kawasaki's local shopping streets to see the latest trends.



Eat

Try local foods

Expand your palate with a variety of local foods and sake at reasonable prices.



Explore

Delve into local history at Kawasaki Daishi

Join more than 10 million people who annually visit this local landmark that has watched the community grow over the centuries.



Overnight Stay Plan

Relax

Blend of traditional and modern culture

Kick back at local cafes and bars and rest at renovated guest houses on an overnight sojourn in Kawasaki.



Discover authentic Japan and enjoy shopping and fine dining in Kawasaki, only 13 minutes from Haneda Airport!

KAWASAKI never sleeps!

Explore popular spots

Make the most of your layover at Haneda Airport!



From Haneda Airport



13 min by train

Easy access!

To Keiyou Kawasaki Station



Walk 3 min

Japanese art



Walk 5 min

Convenient!

Yodobashi Camera, Le FRONT



Lazona Kawasaki Plaza

Directly connected to Kawasaki Station

Expansive shopping area

Find everything you want!



Atre Kawasaki

To Haneda Airport



13 min by train
From Keiyou Kawasaki Station

Head back to the airport with your souvenirs and memories

Walk 5 min



Try traditional Japanese sweets



Tohteru, traditional sweet shop

Experience everyday life in Japan



Shop for trendy cosmetics and popular snacks



Stroll around Kawasaki's well-known shopping streets

Lunch



Delicious Local Foods



Dine out at a Japanese-style bar



From Haneda Airport

15 min by taxi



Visit Kawasaki Daishi Heikenji Temple



Yakuyoke (ward off bad luck)

Shop for souvenirs



Try Kawasaki's famous kuzumochi Japanese jelly!

From Kawasaki-Daishi Station

6 min by train



To Keiyou Kawasaki Station

Visit the famous and historical Kawasaki Daishi

Check-in Nishincho Guest House Street



Drop your luggage off and head downtown

Nisshin Geppo Tokyo Kawasaki

Artistic vibe



Relax at a reasonable price

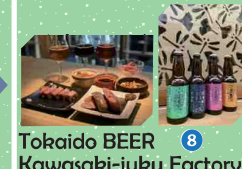
Check out Mt. Fuji on the wall!



Masanoyu, Retro public bath

Big cheers for craft beer!

Craft Beer



Walk 20 min

Sleep



Head off to your next destination after a good night's sleep

Head to fashionable and artistic KAWASAKI →

Cultural Workshops *reservations required



Try your hand at making faceted glass at Tokaido GLASS 6



Indulge your sweet tooth making candy at Matsuyasouhonten



Kawasaki Daishi Heikenji Temple



Yakuyoke



Nakamise Street



Daruma dolls

Talisman for good luck



Sweets at Kawasaki Daishi Sanmon-mae Sumiyoshi

Easy Trips from Kawasaki Station



Fujiko-F-Fujio Museum



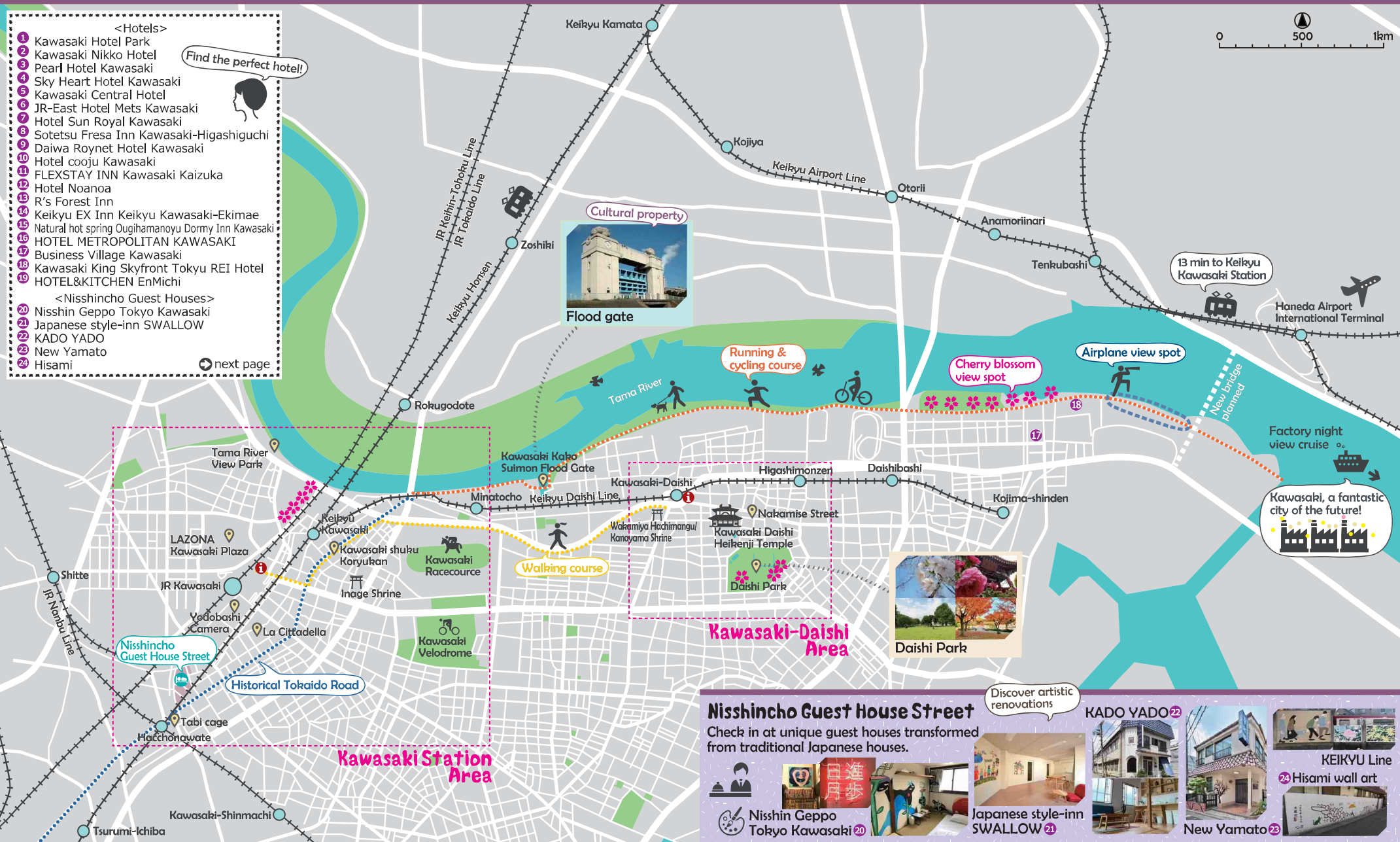
Japan Open-air Folk House Museum



Factory night views cruise *reservations required

Kawasaki-Daishi Area

- <Hotels>**
- 1 Kawasaki Hotel Park
 - 2 Kawasaki Nikko Hotel
 - 3 Pearl Hotel Kawasaki
 - 4 Sky Heart Hotel Kawasaki
 - 5 Kawasaki Central Hotel
 - 6 JR-East Hotel Mets Kawasaki
 - 7 Hotel Sun Royal Kawasaki
 - 8 Sotetsu Fresa Inn Kawasaki-Higashiguchi
 - 9 Daiwa Roynet Hotel Kawasaki
 - 10 Hotel cooju Kawasaki
 - 11 FLEXSTAY INN Kawasaki Kaizuka
 - 12 Hotel Noanoa
 - 13 R's Forest Inn
 - 14 Keikyu EX Inn Keikyu Kawasaki-Ekimae
 - 15 Natural hot spring Ougihamanoyu Dormy Inn Kawasaki
 - 16 HOTEL METROPOLITAN KAWASAKI
 - 17 Business Village Kawasaki
 - 18 Kawasaki King Skyfront Tokyo REI Hotel
 - 19 HOTEL&KITCHEN EnMichi
- <Nisshincho Guest Houses>**
- 20 Nisshin Geppo Tokyo Kawasaki
 - 21 Japanese style-inn SWALLOW
 - 22 KADO YADO
 - 23 New Yamato
 - 24 Hisami
- Find the perfect hotel!
- next page



Nisshincho Guest House Street

Check in at unique guest houses transformed from traditional Japanese houses.



Discover artistic renovations

KADO YADO 22



New Yamato 23





Marudaihoru **A**
丸大ホール
8:30-22:00
Sat
Japanese-style bar



Marudai **B**
鱈 まろだい
11:00-14:30
16:30-21:00
Mon
Grilled eel



Tenryu **C**
天龍
11:00~midnight
Chinese



Miyadai Kurabu **D**
みやだい倶楽部
11:30-14:00
17:00-22:00
Sun & holidays
Sukiyaki



Matsunoki **E**
松の樹
11:00-15:00
17:00-21:00
Mon
Chinese



Tachinomi Tenka **F**
立飲み天下
14:00-22:00, Sun & Holiday
14:00-20:00
Japanese-style bar



Kaijusakaba **G**
怪獣酒場
Mon-Fri 17:00-23:00, Sat 15:30-23:00, Sun & Holiday
Theme restaurant



Kawasaki Torikaraage **H**
川崎鶏唐揚定食店
Mon-Sat 10:00-20:00
Sun
Fried chicken



Naruki **I**
中華成喜
Mon-Fri 11:00-21:30, Sat-Sun & Holiday
11:00-14:30, 17:00-21:30
Tue
Chinese



Sanbore **J**
三樓
Mon-Fri 11:30-14:00
17:00-21:00
Sat-Sun & holidays
Tempura



Tsuruya **K**
焼肉ツギスکانツッパ
18:30-21:30
Tue
Grilled meat



Toriyoshi **L**
鳥よし
11:30-14:00
17:00-24:00
Sat 17:00-24:00
Sun & holidays
Fried chicken



IBIS at unigo **M**
Cafe
11:00-17:00



KITCHEN Enmichi **N**
緑道食堂
Tue-Sat 11:30-15:00
Sun-Mon 11:00-17:00
Tue-Sat 17:00-22:00
Restaurant

Enjoy a wide variety of food and sake at Kawasaki's best-kept secrets!

Local Foods

- <Places of Interest>
- 1 Tokaido Kawasaki Shuku Koryukan 東海道かわさき宿交流館
 - 2 Inage Shrine 稲毛神社
 - 3 Rokugou no Watashiato 六郷の渡し跡
 - 4 Tama River View Park 多摩川見晴らし公園
 - 5 Kawasaki Ukiyo-e Gallery 川崎浮世絵ギャラリー
 - 6 Tokaido GLASS 東海道 GLASS
 - 7 Tohteru 東照
 - 8 Public Bath Masanoyu 銭湯政之湯
 - 9 Nisshincho Guest House Street
- <Services>
- 1 Tourist information center
 - 2 Money exchange (atre' Kawasaki 2F)
 - 3 Convenience store
 - 4 Bicycle rental



Tama River View Park
Enjoy the outdoors!

Try on Japanese clothes of travelers in the world of Ukiyo-e!



Tokaido Kawasaki Shuku Koryukan 1

Kawasaki Station Area



Inage Shrine 2

See what your future holds

Craft Beer



Tokaido BEER Kawasaki shuku factory 3
東海道 BEER 川崎宿工場
Wed-Fri 17:30-22:00, Mon-Tue Sat-Sun & holiday 14:00-22:00

TKBrewing at unigo 4
Fri 17:00-22:30 Sat 15:00-22:30 Sun 15:00-21:00, Mon-Tue



Guest House Street



Public bath, Masanoyu