

KING SKYFRONT

Change the world and shape our future through life science





Beyond the future you can imagine



What will it be like the future?

Nervous? Yes, but more than that, there will be excitement with innovative and groundbreaking research.

The field of life science is progressing day by day.

A leading-research area, KING SKYFRONT, is situated in Tonomachi, Kawasaki City, facing a gateway to the world the Haneda international Airport.

People around the world gather here, and create business by sharing their knowledge, experience and ideas.

Through researches you have never seen before, and innovations you have never expected,

change the world and shape our future here, KING SKYFRONT in Kawasaki.



WHAT IS

KING SKYFRONT?

KAWASAKI INNOVATION GATEWAY AT SKYFRONT

Open innovation site

Located in Tonomachi Area in Kawasaki City, across the Tama River from Haneda International Airport, where we launch new industries.

As an engine for Japan's Growth Strategy

We accelerate the industrial growth by contributing to addressing challenges and creating jobs in the field of healthcare and environment.

Special consideration and treatment available

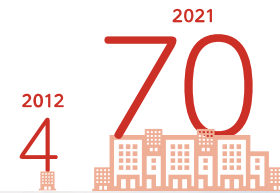
Designated area as the National Strategic Special Zone, International Strategic zone and the Specified Urban Renaissance Urgent Redevelopment Area, you may be eligible for tax incentives, financial support and regulatory exceptions.

Interactions with diverse people

Regardless of age, gender and nationality, people gather, connect, collaborate and launch a novel research project.



Number of organizations located here



Number of researchers



Number of national projects accepted



Facing Haneda International Airport, accessible from/to Tokyo and Yokohama

KING SKYFRONT is a science and technology area across the Tama River from Haneda International Airport. It is easy to access from/to major cities like Tokyo and Yokohama, or the world!



Innovation Through Wide-Area Partnerships

Expands the network by communicating with other R&D sites such as Tsukuba Science City and Shin Kawasaki Sozo No Mori, KING SKYFRONT is broadening its exchange network.



Access

- From Haneda Airport (Terminal 3)
 - By car: Approx. 5 min.
 - By bicycle: Approx. 10 min.
 - On foot: Approx. 20 min.
- From Shinagawa Station
 - By car or train: Approx. 30 min.
- From Keikyu Kawasaki Station
 - Keikyu Daishi Line: Approx. 9 min. to [Kojimashinden Station] → On foot: Approx. 15 min.
 - Keikyu Daishi Line: Approx. 8 min. to [Daishibashi Station] → Rinko Bus: Approx. 10 min. from [Daishibashiekimae bus stop]
 - Rinko Bus: Approx. 25 min. from [Kawasakiekimae bus stop]

Neighborhoods



Haneda Innovation City

A commercial and business complex where you can enjoy dining, entertainment and culture. Research facilities are also on the site.



Haneda Airport Garden

An all-in-one hotel with large conference rooms, directly connected to Haneda Airport.



Shin Kawasaki Sozo No Mori

Incubators and R&D site to create new industries for the next generation through science and technology.

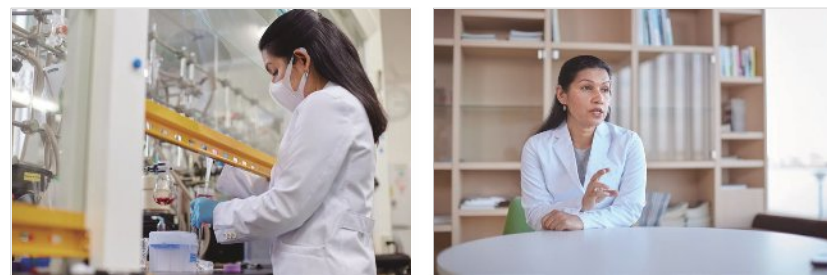
Tell Us About Your

Life Science



I want to use nanomedicine to improve people's quality of life.

Peptide-Based Drug Discovery for a Happier Society



Research Topics

I'm doing research on a revolutionary medical idea called "In-body hospitals." In this approach, nanoscale polymer capsules circulate inside the body, detecting, diagnosing and treating diseases. My mission is to use nanomedicine to establish a smart lifecare society.

Research Topics

Using original peptide drug discovery technology, I work with partners worldwide to find and optimize hit compounds for drug targets. By specializing in peptide drug discovery, I can carry out my research with tight focus and rapid progress.

Novelty in Research Activities

I believe nanomedicine can be effective against diseases that have so far been difficult to treat, such as Alzheimer's disease. Currently, I am focusing on treating brain tumors in young children. Every day, I strive to create a safe and caring environment for these young patients.

Novelty in Research Activities

Using an original peptide discovery technology that uses non-natural amino acids, it is possible to discover drugs with outstanding performance in terms of efficacy, quality and production cost. We are constantly updating our technology, so we've accumulated a huge amount of know-how regarding peptide drug discovery.

What makes doing research at KING SKYFRONT so appealing?

Independent R&D institutes that specialize in nanomedicine, as iCONM does, are rare in this world, so I'm really thrilled to work in this sort of environment. Also, the location encourages diversity; being adjacent to the airport, and its convenience and surrounding environment are getting better each year.

What makes doing research at KING SKYFRONT so appealing?

I love to interact with researchers in KING SKYFRONT. Actually, one of our joint research partners is located at KING SKYFRONT. Previously, access had been a problem for us, but with the opening of Tamagawa Sky Bridge, I expect getting to work and using the airport will become really convenient.



Sabina Quader

Innovation Center of Nanomedicine (iCONM)



Haruaki Kurasaki

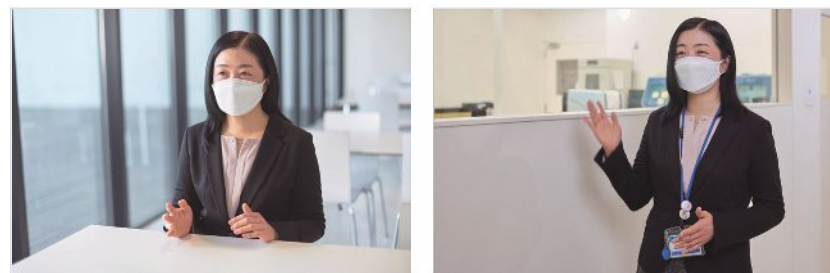
PeptiDream Inc.



Tell Us About Your



We want to protect the health of citizens.



Research Topics

The Kawasaki City Institute for Public Health has three divisions: the Division of Microbiology, the Division of Physics and Chemistry, and the Infectious Disease Surveillance Center. We conduct investigative research, testing and dissemination of information to protect the health of citizens. Regarding investigative research, our objective is to build evidence that can be reflected in measures.



Novelty in Research Activities

In order to promptly share information with hospitals/clinics in the city, we launched the Kawasaki-city Infectious Disease Surveillance System (KIDSS) in 2014 and are actively disseminating information. This system provides comprehensive support for the diagnosis, treatment and control measures of infectious diseases. We believe that this is a progressive approach that no other local government has taken.

What makes doing research at KING SKYFRONT so appealing?

We are able to get hints for our research through jointly holding events with other organizations and participating in seminars. In addition, the convenience and the surrounding environment, which was an issue in the beginning, is getting better day by day. It's really exciting to be able to work in this area that is evolving and developing year by year.




KAWASAKI CITY
Aya Maruyama

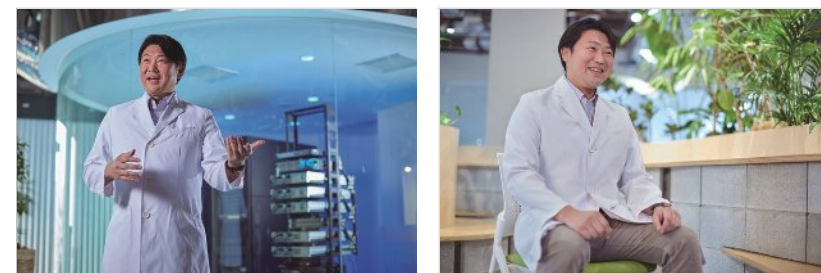
Kawasaki City Institute for Public Health



Life Science



Solving social issues through the study of allergies



Research Topics

We carry out research by combining activities at four locations: Kyoto Prefectural University of Medicine, Tachikawa Hospital, UJA*, and Keio University Tonomachi Town Campus. Our area of specialization is allergies, and in addition to topics such as atopic dermatitis and drug allergies, we conduct research on health threats that emerge due to social activities, such as virtual-reality sickness.



Novelty in Research Activities

What makes our approach fresh is the use of surveys to determine how to actually implement new treatments that are based on analysis of real-world data; and the building evidence as tools to eliminate disparities in treatment. With respect to virtual-reality sickness, we gather the latest data in various ways, including by monitoring virtual-reality forums sponsored by UJA.

What makes doing research at KING SKYFRONT so appealing?

The Executive Office is easy to talk to, so we can easily get the support we need. When it's time to commercialize our research, KING SKYFRONT completes all the procedures for us, which we really appreciate. Also, the location is a big draw, as it's easy to connect with research institutes around the world.

UJA: United Japanese researchers Around the world
The UJA is a network of approximately 6,000 Japanese researchers active outside Japan. Takeya Adachi serves as the president and representative director.


Keio Wellbeing Research Campus

Takeya Adachi

Keio University
Tonomachi Town Campus



Tell Us About Your Life Science



Research for human health and welfare



Research Topics

We aim to contribute to human health and welfare, through medical research with experimental animals. With consideration for animal welfare, we develop and evaluate animal disease models, such as humanized mice and common marmosets, bearing pathologies that share features with a human disease.

Novelty in Research Activities

We develop animal disease models, more relatively closed to humans, and the methods for evaluating. My job is to develop imaging technologies using MRI. I am working on observing the dynamics of water that excretes waste products in the brain, which, for example, causes Alzheimer's disease and neurological diseases.

What makes doing research at KING SKYFRONT so appealing?

We can provide animal disease models developed by our institute, and also by using our MRI/CT, people from other institutes are able to observe their own animal disease models. MRI/CT can be applied not only to drug discovery but also to fields such as foodstuffs and material science. One of the attractions of KING SKYFRONT is that, by intensifying our partnerships with other research institutes here, we can pursue joint research that leverages each of our areas of specialization.

CIEA

SINCE 1952

Yuji Komaki

Central Institute for Experimental Animals



Business Environment

Business Environment



Encourage further innovation

KING SKYFRONT

Central Institute for Experimental Animal, where advanced lab equipment are available to be shared, the national research institute which plays a key role in regulatory, the modern lounge and sustainable hotel, KING SKYFRONT has all in one place to boost innovation.

National Institute of Health Sciences

The National Institute of Health Sciences (NIHS) conducts testing, research, and studies toward the proper evaluation of the quality, safety, and efficacy of pharmaceutical products, foods, and the numerous chemicals in the living environment. Collaborative research is applicable to companies in KING SKYFRONT Area.



LINK-J Communication Lounge

Kawasaki City is co-operating a communication lounge with Life Science Innovation Network Japan (LINK-J), researchers, entrepreneurs, and investors, research institutes inside and outside the KING SKYFRONT Area, and LINK-J members connect, share their ideas, and turn into new projects and partnership.



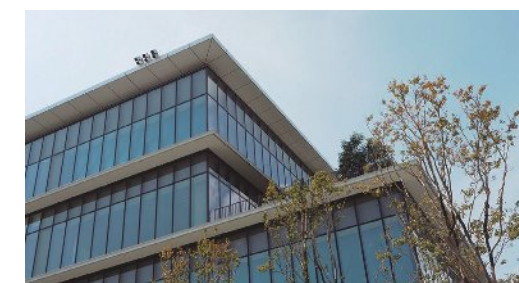
Tokyu REI Hotel Kawasaki KING SKYFRONT

A waterfront warehouse-style eco-friendly hotel. The café space is designed to be "open", and used for matching events and as a place for exchangers among researchers.



KING SKYFRONT Management Center

The KING SKYFRONT Management Center is the Kawasaki City's local office to manage the KING SKYFRONT area. When you have any questions about the area, please let them know! The office can also works as a hub to connect between companies / institutes.



KING SKYFRONT's Cluster Management Creates New Value for the Region

KING SKYFRONT

KING SKYFRONT

Promoting Cluster Formation

Exchange of views among researchers working at KING SKYFRONT creates structures for generation of synergies in research.

Main driver: Tonomachi LifeScience Cluster Division, Kawasaki Institute of Industrial Promotion

LINK-J

(Life Science Innovation Network Japan)



Kawasaki City has concluded a memorandum of mutual partnership in the life sciences field with LINK-J, an association that encourages open innovation and supports the formation of new industries. LINK-J is based in Tokyo's Nihonbashi district, where numerous pharmaceutical and other medical-related companies are concentrated.

Science Café (Tonomachi Cafe)



Seminars are held regularly here in a café format, as an integrated means of training personnel and commercializing cutting-edge R&D results from the fusion of different fields. The Café aims to serve as a catalyst for business creation.

BioM Biotech Cluster Development GmbH (Germany)



Kawasaki City has concluded a memorandum on economic exchange with BioM Biotech Cluster, focusing on the health, medicine and welfare fields. They play a role as a bridge between the companies and research institutes in their respective regions and aim to foster international innovation through this partnership.

B2B Matching



Business-matching events and pitch events are held regularly in partnership with bioclusters in Japan and abroad, pharmaceutical majors and others.

Energizing researchers' businesses

Area Management Functions

Building face-to-face relationships creates a community in which researchers can pursue their activities with greater ease.

Main driver: KING SKYFRONT Networking Council

Examination and resolution of common issues, information sharing



Hosting various seminars and general-affairs planning subcommittees of the council

General-affairs planning subcommittees of the council is held regularly, gathering managers in charge from each organization to exchange views about common issues and share information about the area. Topics vary widely, from disaster preparedness and measures against infectious diseases to goals for the future state of KING SKYFRONT.

Forums for Exchange Beyond Organizational Boundaries



Exchange events

New Year exchange events (informal gatherings), bowling tournaments, viewing of games by the basketball Kawasaki Brave Thunders and observation tours of nearby companies are just some of the events for exchange beyond organizational boundaries that the KING SKYFRONT Networking Council plans and presents. These events help build relationships through face-to-face get-togethers.

Contribution to the Regional Community



The Summer Science Event

During the summer holidays, the KING SKYFRONT Networking Council present a summer science event every year. This interactive event supports study and free-research activities of primary-school pupils and other children on various themes, aiming at helping children to see the world of science all around them and kindling curiosity and interest in science and technology that may cultivate the researchers of tomorrow.



Ryuta Nomura, President, KING SKYFRONT Networking Council

What is the KING SKYFRONT Networking Council?

The KING SKYFRONT Networking Council is a self-governing council through which researchers and employees can get together. Researchers and others participate enthusiastically in events and conferences, fostering exchange, contribution to the local community and joint research. The Association also cooperates with Kawasaki City to envision and build the Kawasaki of several decades hence.

Area development for researchers in mind

Urban Development to make Open Innovation

The history of KING SKYFRONT

In 1970, the KING SKYFRONT was an automotive plant of Isuzu Motors Limited. When Isuzu relocated its plant in 2001, the Urban Renaissance Agency (UR), a semipublic Independent Administrative Institution, acquired the land. Since the acquisition, UR had continuously discussed the direction of the urban development. As the result, UR and Kawasaki City jointly carried out the land re-adjustment project, which delivered the KING SKYFRONT.

The KING SKYFRONT is a site

- to be a pioneer in the field of environment & life-science in the field.
- to create a vibrant urban community by leveraging the proximity to Haneda Airport.
- to be an eco-friendly community associated with a great nature around the Tama River.

As the above stated, the extensive knowledge of UR's for the urban development are fully used.

By implementing urban development suited to the needs of an open innovation site, KING SKYFRONT is attracting a steady stream of companies in the life-science field which contribute Japan's growth strategy.

The site has become a place in the hearts of working people and people in the community as a center for collaboration among industries, governments and universities and as a forum for exchange among citizens.

Before Isuzu Automotive Plant



Future development of the coastal area in Kawasaki

By establishing a new site leading "Society 5.0" in the Minamiwatarida area, with creating a high value and changing land-use, we are aiming for great effects to the KING SKYFRONT.

After KING SKYFRONT and former Haneda Airport site



The site formerly occupied by Haneda Airport (Zone 1)

UR carried out the land re-adjustment project. The traffic square in front of Tenkubashi Station was established, and Haneda Innovation City (HI City), a site for emerging and cultural industries, launched.

The development of the urban planning parks and roads is working on!



Soramunado Hanedaryokuchi

The pedestrian along the waterfront with a terrace offering panoramic views.



The site formerly occupied by Haneda Airport (Zone 2)

Haneda Airport Garden, a large-scale, mixed-use commercial and residential complex, was born as an exchange-hub connected to Haneda Airport's Terminal 3.



Tamagawa Sky Bridge

Tamagawa Sky Bridge opened in 2022. This bridge makes access to Haneda Airport easier and forms a nexus for a wide-area growth strategy.

KING SKYFRONT

I never knew such a future was possible.



KAWASAKI CITY



KING SKYFRONT Management Center, Coastal Area International Strategy Headquarters, Kawasaki City
Tel: 044-276-9209 E-mail: 59kings@city.kawasaki.jp

