

In Formulating the Vision

About 100 years ago, the Kawasaki coastal area was created by Soichiro Asano, the pioneer of entrepreneurs, through landfilling projects and corporate invitations and has made great strides in the post-war high economic growth period by supporting the Japanese economy. After that, in the process of experiencing the hollowing out of industry due to environmental issues and globalization, the entire area, mainly companies, has repeatedly replaced the old with the new and has progressively advanced the R&D function and accumulation of logistics facilities. At present, efforts to strengthen the competitiveness of key industries and business collaborations utilizing the strength of an industrial complex have emerged. In addition, the Tonomachi International Strategic Base, King Skyfront, was formed, and efforts using hydrogen were developed. The movement to create new industries is also accelerating.

For the sustainable development of the Kawasaki coastal area even in the continued turbulent world and aiming not only to support citizen services and employment as the center of the creation of a strong industrial city but also to become a global model area as an industrial base, we have formulated Vision For Coastal Area looking ahead 30 years with various related parties, including companies, this time.

In the Vision, as the ideal image in 30 years that the Kawasaki coastal area is aiming for, industries that realize the affluence are in full play as required in a new era and an area where diverse human resources and cultures resonate by utilizing the climate of the Kawasaki coastal area were set. However, it is not possible to realize an attractive area by only setting up the vision. In order to achieve the ideal, it is essential that all people involved in the coastal area share the vision, cooperate in its realization, and make every effort under their respective roles.

Let's work together toward the realization of the Kawasaki coastal area that will continue to shine 30 years from now.

Kawasaki City Mayor : **Norihiko Fukuda**

KAWASAKI CITY

Coastal Area International Strategy Headquarters,
Coastal Area Projects Promotion Department
T E L : 044-200-0524
Email : 59jigyo@city.kawasaki.jp

(Issued March 2018)

Vision for Coastal Area

- The Ideal Image of Kawasaki Coastal Area -



Colors, Future!
KAWASAKI CITY



Putting new ideas into shape

In this area, people with new ideas will gather from all over the world. Cutting-edge research and development and social implementations will be carried out, ideas will be put into shape, and new values will be created one after another. And the value will spread to surrounding areas.



Creating Japan's largest added value in Japan

By replacing of the old with the new at the industrial complex that has supported this area, the key industries will become highly functional and smarter, realize environmental harmony, and create the highest added-value in Japan.



Realizing zero emission

To contribute to the international community, industries harmonized with the environment will develop new raw materials and new materials, spread utilization of clean energy and realize low carbon/zero emission throughout the area.

Hub where people, goods, and information come and go

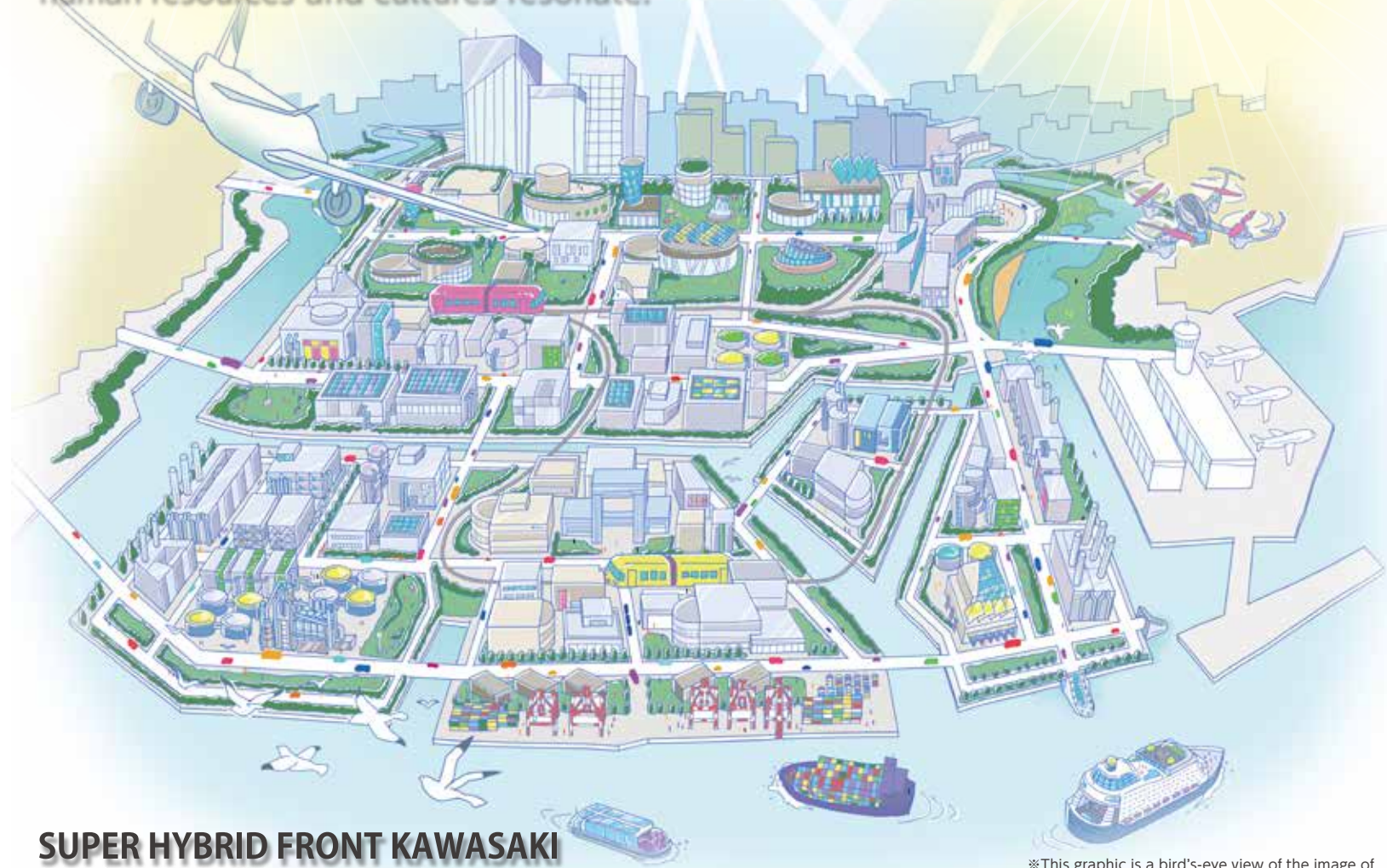
By improving the functionality of logistics to meet the various needs of land, marine and air transportation, the area will strengthen its role as an important domestic and international hub where people, goods, and information come and go.

In a district abundant with intelligence and creativity, new values will be continuously created through innovative technologies that are in full play to realize the affluence

The area will become the pride of the receptive area where working, living, and human resources and cultures resonate.

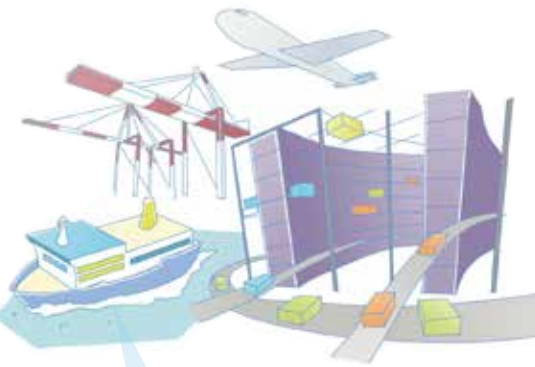
and creativity, new values will be continuously created through innovative technologies, products and services by industries of a matured society.

working people and citizens as a highly learning are integrated, and where diverse



SUPER HYBRID FRONT KAWASAKI

※This graphic is a bird's-eye view of the image of the Kawasaki coastal area in 30 years.



Area to improve oneself

The coastal area will become an R&D personnel and highly technical Japan. Simply coming here to work people will be provided with from the basics to applications when integrated system of cutting-edge human resources supporting in this district is stimulating and multiple opportunities to learn improving their careers.



Pleasant area for work

Companies and research institutes located in this area will enjoy a pleasant and comfortable working environment where their employees can eat, drink, interact with each other and spend leisure time close to their workplaces. People will be happy to work here because they can live close to their workplace and have diverse schedules for a work-life balance.



Comfortable traffic

Through improvement of new means of accessibility, the area will become a place to where people commute and gather comfortably.



Tokyo metropolitan's disaster-protection area

By establishing a strong lifeline, social infrastructure, and cooperative system of all parties related to the coastal area, the area will become a secure place for working people and citizens where their lives are protected. In addition, as a major energy base, the area will be the pivot for protecting the Tokyo metropolitan area in case of a disaster.



Cool and exciting coastal area

When more and more people learn about the developments of the coastal area and its transition into an active and creative cultural zone, the area will be better known as a "cool and exciting" place, and a site for the citizens of Kawasaki to be proud of.

History of Kawasaki Coastal Area

Formation of the Keihin Coastal Area(1900-1950s)

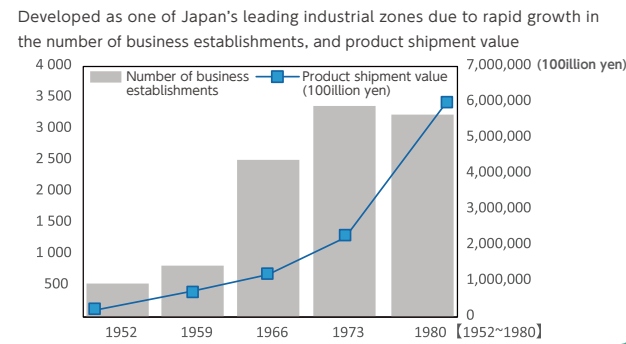
Driving of the high economic growth(1950-1970s)

Efforts to solve environmental problems(1960-1990s)

Industry hollowing-out(1990s)

Regeneration of the Coastal Area(1990-2000s)

Formation of new bases and creation of new industries (2000s-today)



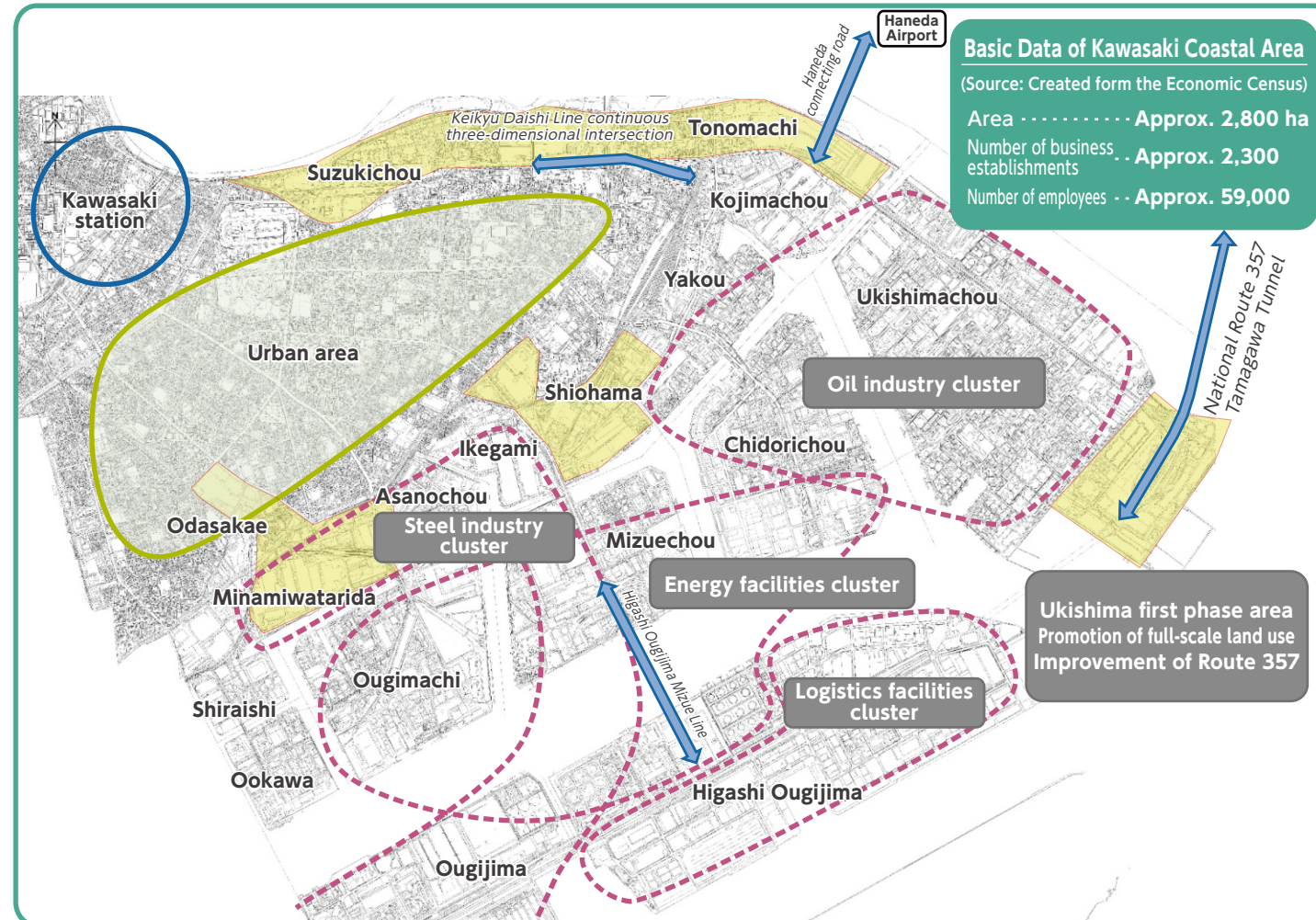
The entire district was changed to become an area where industry and environment are in harmony.



Empty factory lots became the bases for life science/environment and R&D institutions accumulated.



Current State of Coastal Area



Background and Purpose of Vision Formulation

[Global Situation]

- Economic shift to Asia, population growth, and aging
- Global warming countermeasures and change in energy balance
- Industrial revolution and technological innovation, including AI and IoT
- Revolution of transportation means triggered by the spread of EVs

[Local Situation (in Japan)]

- Shrinking working-age population, population concentration in the Tokyo metropolitan area
- Nationwide efforts toward reduction of CO₂ emissions
- Shorter travel owing to maglev Shinkansen

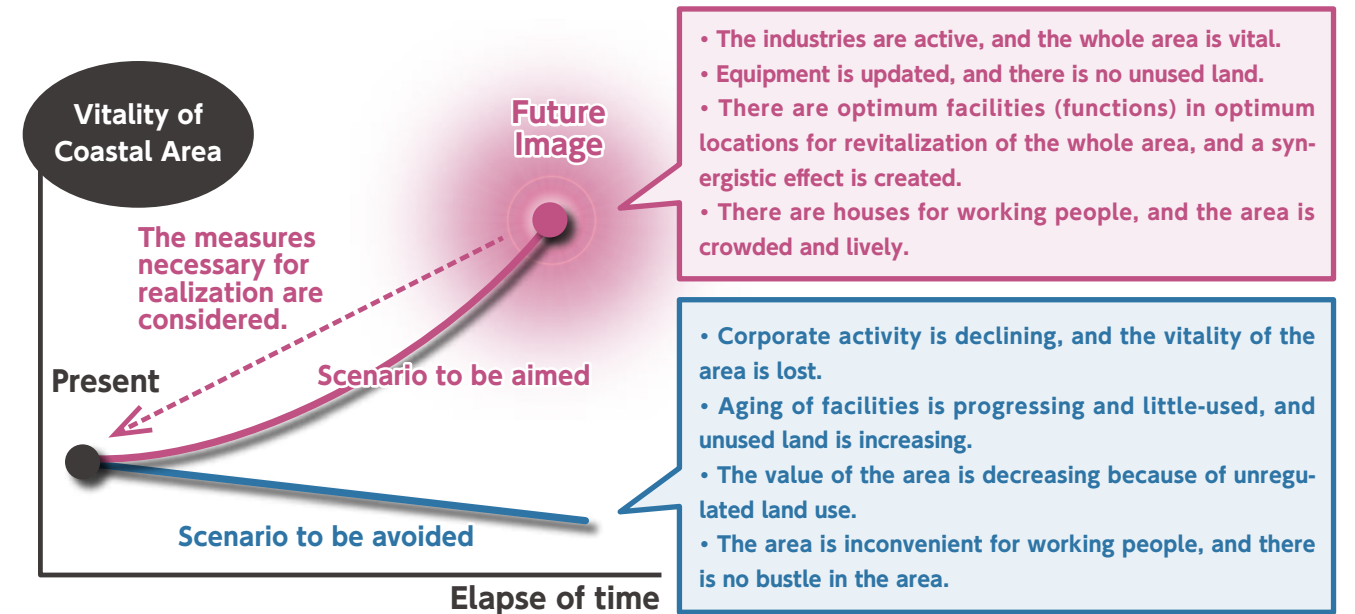
[Current State of Kawasaki Coastal Area]

- The industrial structure undergoes a major transformation, such as the overseas transfer of manufacturing functions to other countries accompanying globalization.
- Aging of facilities that have been in production since the high-growth period are aging.
- Formation of King Skyfront, an international strategic base for life science etc, where the hydrogen projects are progressing, and new growth industries are emerging.
- Accompanying the growth in logistics/distribution, there is an increase in constructions of large-scale logistics facilities and upgrading of the port function.

The ideal image of the coastal area looking ahead 30 years, the strategy for its realization, and the direction of efforts are shown herewith in order to sustainably develop the Kawasaki coastal area. The Kawasaki coastal area will play a central role in the creation of a strong industrial city, as a district where industries and the environment are highly harmonized, to drive the future growth in Japan.

Method of Vision Formulation

Rather than the method for considering the solutions to individual issues that are currently faced and building up the whole, the vision was formulated using the **back-casting method** to set and share the future image of the coastal area looking ahead 30 years and then to consider realization measures.

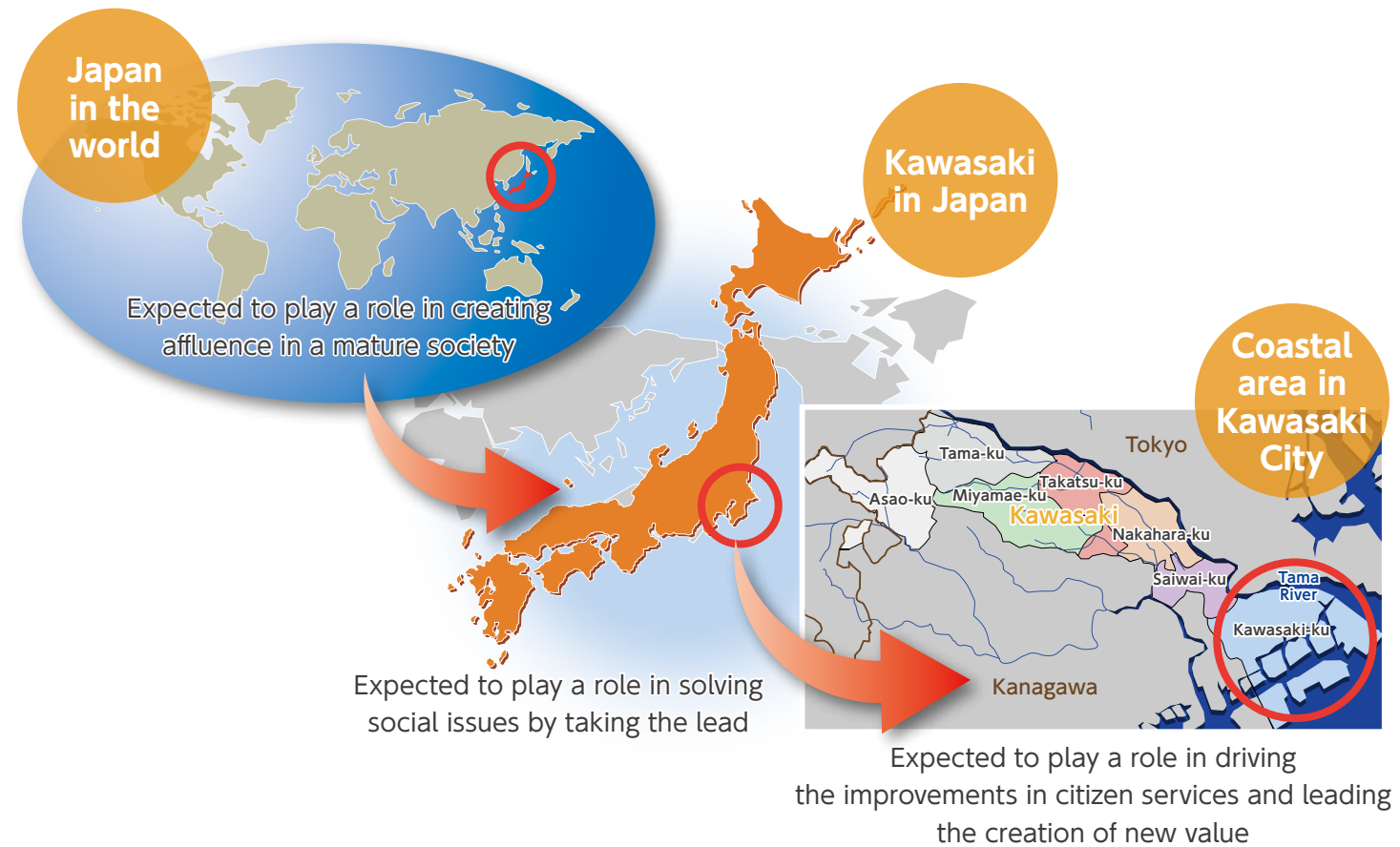


Expected Socioeconomic Environment (Mainly in Industrial Field) in 30 Years

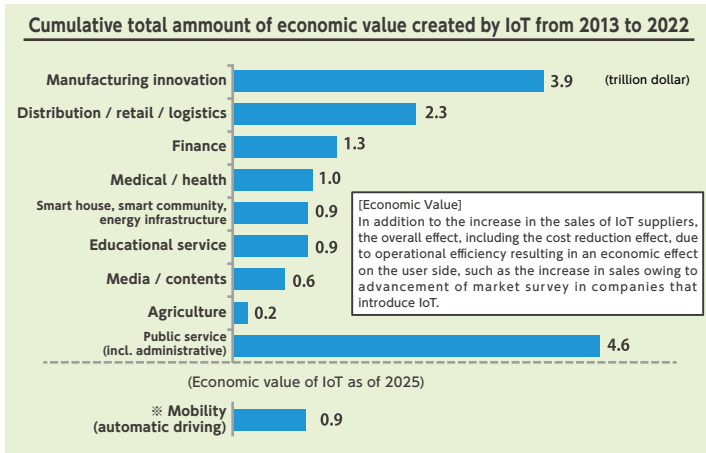
- With the progress of the fourth industrial revolution, the social system of Society 5.0 where the source of value has shifted to humans (human resources) and data, connecting and integrating various things that are apart, and independent and distributed new technological innovations will create great added value.
- As innovations evolve around the world at unpredictable speeds and channels, a process will be available with which people who fail can have chances to try again through trial and error by involving society.
- By 2050, construction and improvement of the major transportation infrastructure are expected, such as the three circular routes in the Tokyo metropolitan area and the Maglev Chuo Shinkansen, will progress significantly, and the convenience of the land, transportation and way of life will improve dramatically.
- With the advancement of ICT, technological innovations, such as automation and mechanization, there will be progress in a wide range of fields, such as transportation, logistics, and construction. Furthermore, in addition to the cutting-edge fields of medical, science, engineering, and IT, innovation and growth will be realized through various cross-cutting and interdisciplinary research and development in the manufacturing industry and the food industry.
- Regardless of specific workplace, workstyle, and age, society will support diverse workstyles and ways of life for various people from young people to the elderly, depending on their positions and abilities.
- Because of the escalation of global warming, countermeasures for the environment on a global scale will be implemented.

Role of Kawasaki Coastal Area

- ◆ As the center of a strong industrial city, create the development and employment in the area and drive the improvement of citizen services through the increase in sales and investments by companies and the increase of income of working people.
- ◆ Bring industrial repercussion to the capital spheres of Tokyo and Yokohama.
- ◆ Lead the creation of new values that solve global issues by providing a place for implementation of new technologies through the utilization of area characteristics.

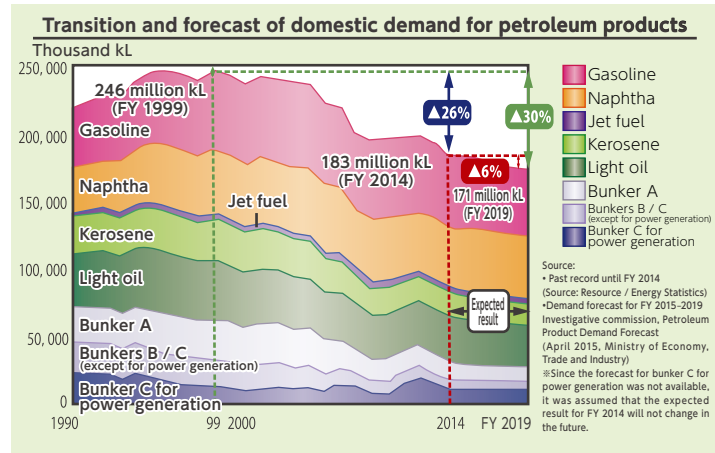


Expected growth in IoT field



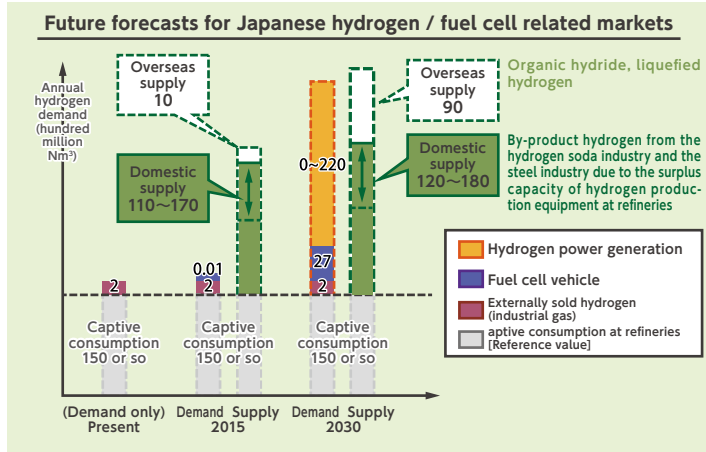
(Source: New Industrial Structure Vision, Ministry of Economy, Trade and Industry)

Expected fall in domestic oil demand



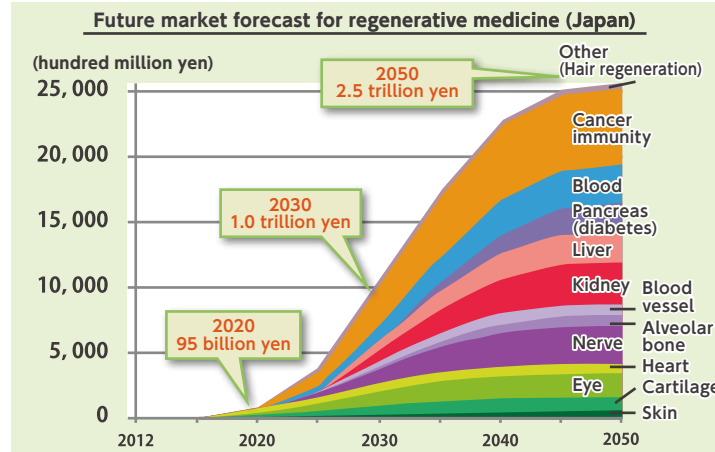
(Source: 2016: Petroleum Industry Today, Petroleum Association of Japan)

Hydrogen market to expand



(Source: Hydrogen Energy White Paper (2015), New Energy and Industrial Technology Development Organization)

Health / medical field market to expand



(Source: Report on Practical Application / Industrialization of Regenerative Medicine (2013), Ministry of Economy, Trade and Industry)

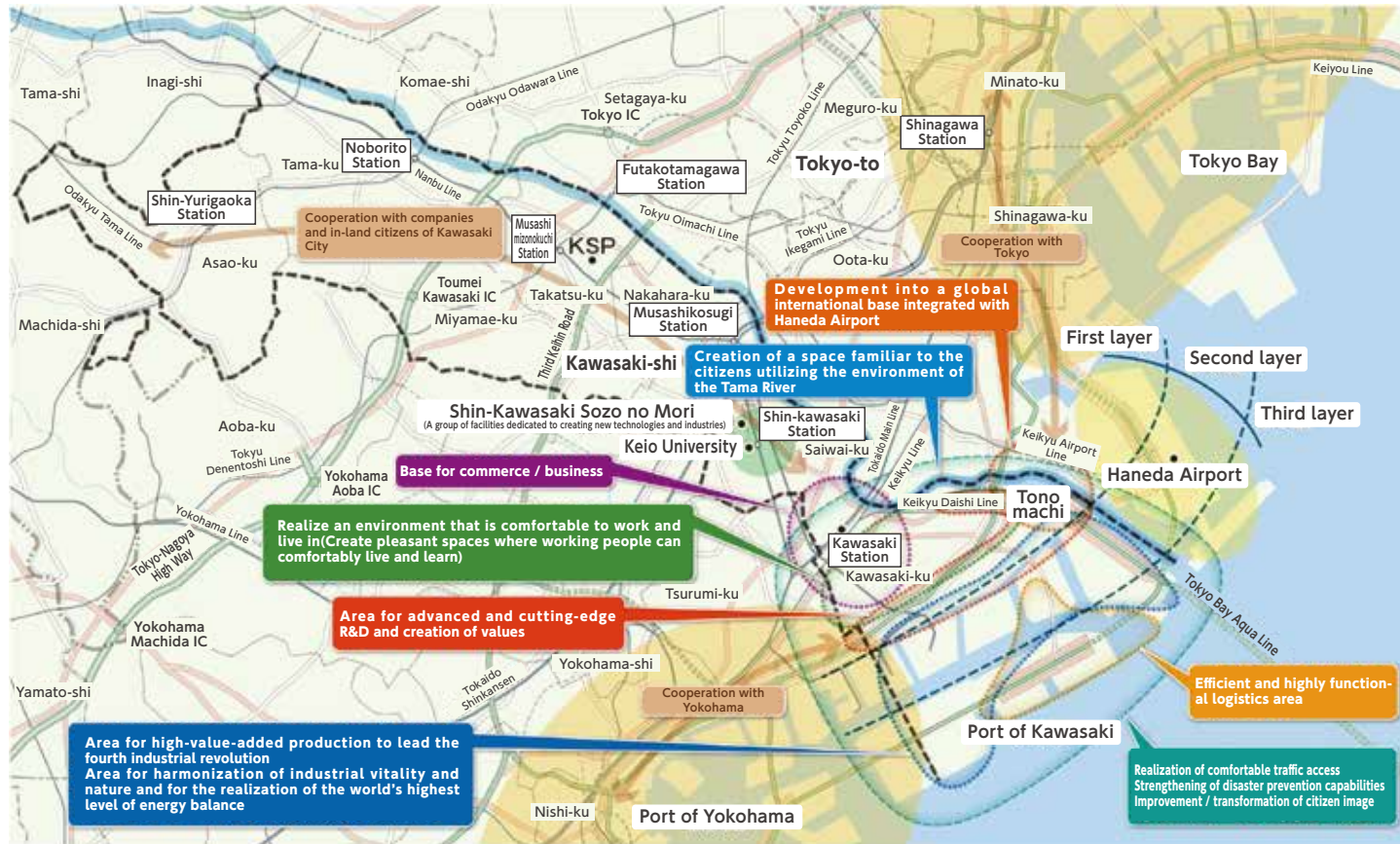
Philosophy behind the Vision

- The Kawasaki coastal area should continue to be an area that generates the most added value in the world from now on as an **area where industries (manufacturing) continue to develop and become more sophisticated.**
- The Kawasaki coastal area should be aimed to become an **area that emphasizes diversity and interaction.**
- The Kawasaki coastal area should be aimed to become not only an industrial area, but also an **area fulfilled with the natural environment, living, and learning opportunities.**
- The Kawasaki coastal area **should optimize the use of local resources** including Haneda Airport, Keihin Port, and the Tama River.
- The Kawasaki coastal area should be aimed to become an **area that the citizens and working people can be proud of.**

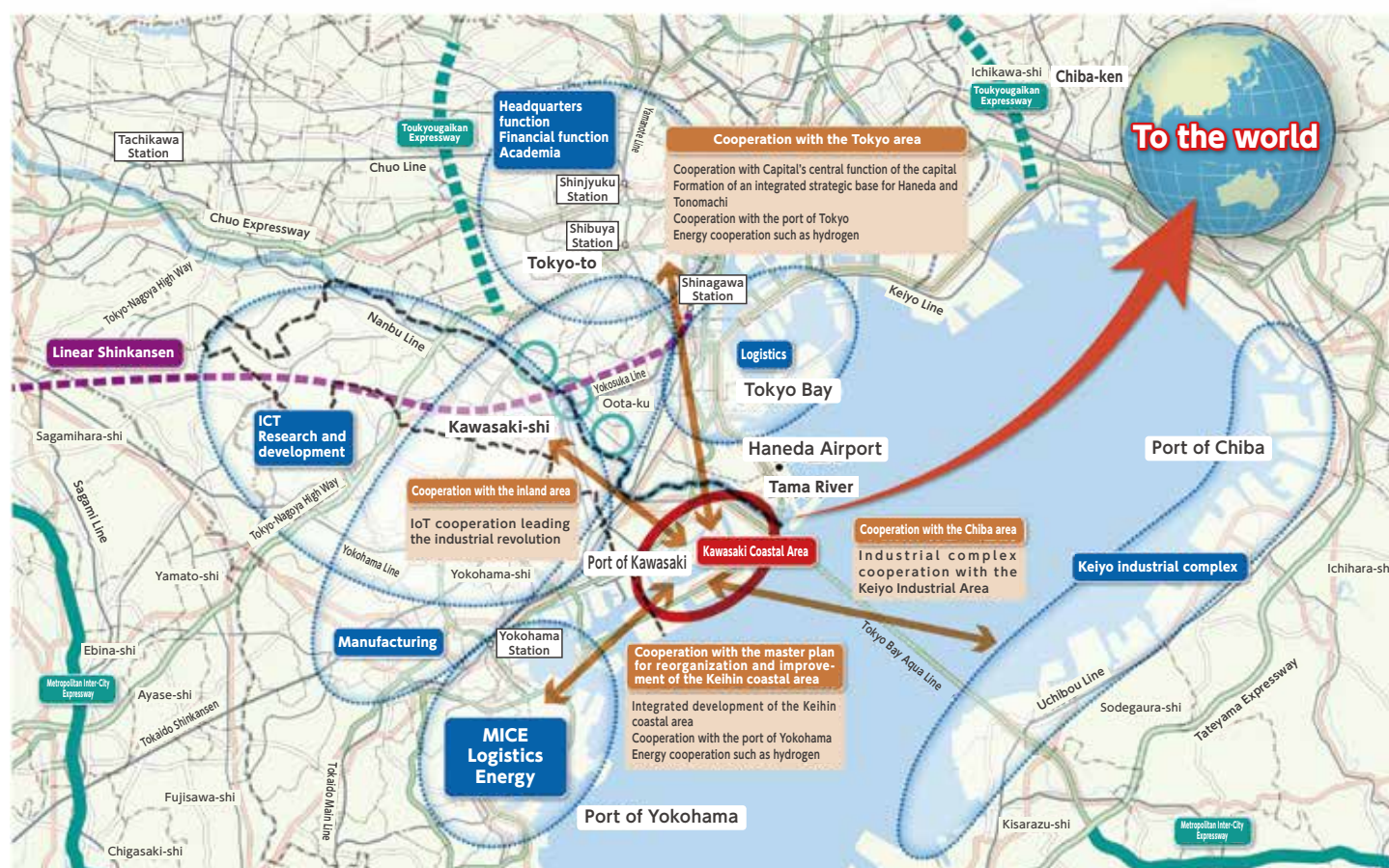
Area Image in 30 Years

Development of Coastal Area and the Cooperative area within Kawasaki City

When preparing the following two maps, approval by the director general of the Geospatial Information Authority of Japan was obtained, and the topographical map with a scale of 1:25,000, digital map 25000 (place names / public facilities), base map information, and electronic topographical map (tile) issued by the authority were used. (H27 Information Use, No. 854-5)



Wide-area cooperation and expansion to surrounding areas

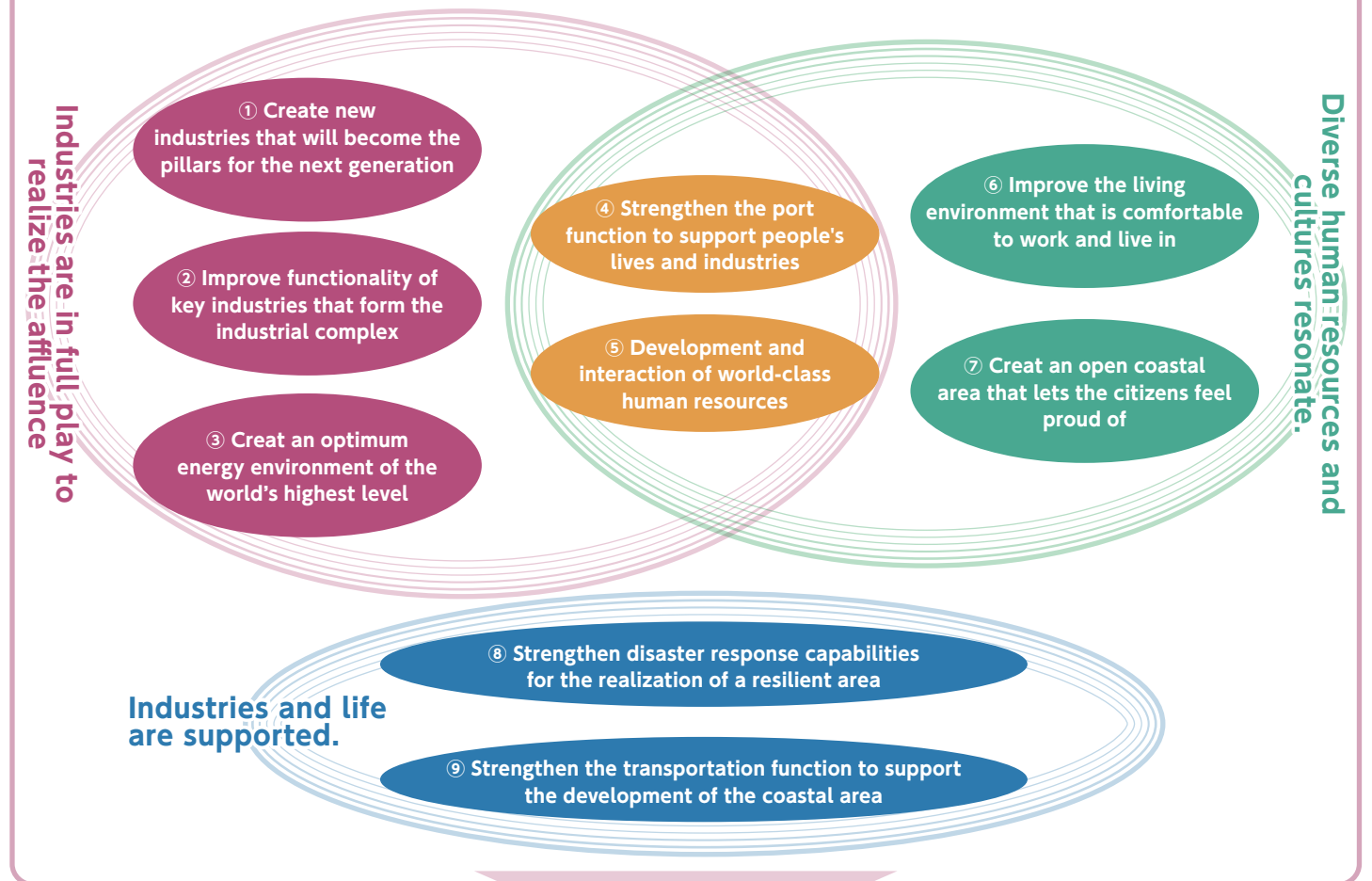


Structure of Vision



Basic Strategy

In order to maximize the value while exerting the potential of the Kawasaki Coastal Area to the maximum extent toward the realization of "The Ideal Image in 30 Years", the directions to be grappled with the future are shown for each field.



Leading Projects

A leading project or model project implemented within the next 10 years will be determined by the primary strategy to realize the ideal image of Kawasaki in 30 years.

Leading Projects

The leading projects will be grappled within next 10 years based on the basic strategy to realize the ideal image in 30 years. The overviews of the projects from FY 2018 are herewith introduced with the leading projects aiming to realize the vision by promoting the most effective efforts while flexibly responding to changes in social conditions.

- 1 New industrial base formation project
- 2 Asset utilization and investment promotion project
- 3 Hydrogen energy utilization promotion project
- 4 Low-carbon industry area construction project
- 5 Port logistics function enhancement project
- 6 Area revitalization project utilizing seaside space
- 7 World-class human resource development project
- 8 Project to create an environment people want to work in
- 9 Green space creation project
- 10 Project to promote the proximity of workplace and housing
- 11 Project to visualize corporate activities
- 12 Disaster response capability improvement project
- 13 Traffic function enhancement project

1 New industrial base formation project

While creating a synergistic effect between bases, constructing the first layer a R&D base

Accumulation of R&D function in the life science field

Cooperation between bases

Leading Society 5.0 such as AI and IoT

Establish the Minami-Watarida district as the base for new industry creation where R&D and social implementation of AI and IoT are performed

2 Asset utilization and investment promotion project

- In the second layer of the coastal area, the facilities are aging.
- Scarcely-used or unused land and facilities occur in some parts.
- Eliminate aging of facilities
- promote new investment in facilities
- promote optimum use of land
- promote effective use of assets

Strengthen corporate industrial competitiveness through elimination of aging facilities, effective use of assets, and the promotion of new investment in facilities.

3 Hydrogen energy utilization promotion project

Construct an area utilizing hydrogen energy which is very clean.

4 Low-carbon industry area construction project

In addition to steadily implementing the environmental measures at each business place, and promoting active introduction and social implementation of new technologies of AI and IoT, a model zone will be constructed to solve environmental issues by utilizing industrial accumulation in the coastal area

5 Port logistics function enhancement project

Strengthen logistics functions supporting the Tokyo metropolitan area

6 Area revitalization project utilizing seaside space

Revitalize the area by carrying out various events and new festivities while utilizing the coastal recreational and green spaces

7 World-class human resource development project

Courses and practical education for cultivation of diverse human resources

Establish a scheme for cultivation of R&D human resources and skilled human resources who support Japan

8 Project to create an environment people want to work in

Place for: Eating and drinking, Resting, Interaction beyond organization

Construct an area that working people feel happy and proud of, by creating a comfortable working environment where diverse human resources gather and interact with each other.

9 Green space creation project

Create high quality common green spaces and water recreational spaces in consideration of biodiversity that citizens become familiar with and enjoy for recreation

10 Project to promote the proximity of workplace and housing

Improve the living environment between Kawasaki Station and the coastal area to ensure continuous employment in the coastal area, and to realize the proximity of the workplace and housing

11 Project to visualize corporate activities

Tour of a research site by a school in the city

Have citizens to feel proud by improving their recognition, level of understanding and image of the coastal area

12 Disaster response capability improvement project

Create a resilient area through the implementation of disaster prevention, disaster mitigation, and early recovery measures

13 Traffic function enhancement project

Enhance transportation functions to support sustainable development and increase value of the coastal area