

## Notification of School Expense Subsidies (New Enrollment Subsidies) for Fiscal Year 2025

The School Enrollment Assistance (New Enrollment Subsidies) is a system to provide a certain amount of financial aid to those whose children will be entering municipal elementary schools and who are having trouble preparing for school due to financial reasons. **An application is required to receive aid (Even if your child is currently receiving tuition aid, you must apply again).** In order to receive the aid, you must apply for it. The conditions for receiving aid and the amount of aid are as follows. If you do not wish to apply for this assistance there is no need to submit the application form.

### 1. Potential Recipients of the New Enrollment Subsidies

Students who meet any of the following application reasons may apply for the New Enrollment Subsidies.

Application Reasons		
(1)	Public assistance has been suspended or terminated this year or in the previous year.	
(2)	Receiving a child rearing allowance.	*This is not the child allowance or special childcare allowance.
(3)	Income in 2023 was less than the standard amount (see the guidelines below).	
(4)	Have other financial difficulties.	
(5)	Household finances changed abruptly.	

Application Reasons (1) Required documents (copy acceptable) Certificate of public assistance

Application Reasons (2) Required documents (copy acceptable) child rearing allowance.

※(4)(5) correspond to "received a loan for livelihood welfare funds" and "lost my employment."

For details, please refer to the attached "Reasons and Required Documents for Recognition of Need for Assistance in Excess of the Approved Standard Amount."

### [Guidelines for Total income or Gross Income]

Number of household members	Two	Three	Four	Five	Six	Seven	Eight
Total income	Approx. 2.13 million yen	Approx. 2.66 million yen	Approx. 3.1 million yen	Approx. 3.23 million yen	Approx. 3.67 million yen	Approx. 4.6 million yen	Approx. 5.02 million yen
(Gross income)	(Approx. 3.31 million yen)	(Approx. 4 million yen)	(Approx. 4.55 million yen)	(Approx. 4.72 million yen)	(Approx. 5.26 million yen)	(Approx. 6.42 million yen)	(Approx. 6.91 million yen)

※The total income amount refers to the amount stated on the "Certificate of Taxable (Non-taxable) Amount" for municipal and prefectural taxes.

In the case of the Certificate of Income and Withholding Tax, the amount is the sum of the "Amount After Deduction of Employment Income" column, and for the Tax Return, the sum of the "Total," "Separate Tax," "Retirement," and "Timber" columns of the "Income" column.

Furthermore, if there is more than one person with income in the household, the amount will be the total of each person's income. If there is income from employment, public pension, etc., 100,000 yen is to be deducted from the total amount of income from employment and public pension.

### 2. Ineligibility for New Enrollment Subsidies

If any of the following descriptions are applicable to you, you are not eligible to receive New Enrollment Subsidies.

1	You are receiving public assistance. (If you are receiving public assistance, you can receive Enrollment Subsidies from public assistance.)
2	You do not have a savings account at a financial institution.
3	You are receiving a support similar to the New Enrollment Subsidies from another municipality.
4	Students entering schools other than Kawasaki Municipal Elementary Schools
5	Students entering Kawasaki Special Education Schools (Any child who enrolls in a special support education school is eligible for Expenses for School Supplies for New Students that are provided as a special support education scholarship incentive fee.)

\* If you do not have a savings account at a financial institution, the school expense subsidies will be paid through a school if you apply for school expense subsidies for fiscal 2025 and the application is approved after your child enrolls in a Kawasaki municipal elementary school. For that reason, you can receive the Expenses for School Supplies that are equivalent to the New Enrollment

Subsidies.

### 3. Amount of New Enrollment Subsidies, notification of result of screening, payment date and method

- (1) Amount of school expense subsidies to be paid: **57,060** yen (tentative)
- (2) Notification of screening results: All applicants will be notified of screening results via postal mail at the beginning of March.
- (3) Payment date and method: School expense subsidies will be paid into your bank account in March.

### 4. How to apply, and deadline

- (1) Electronic applications <refer to "entering electronic applications" enclosed>

Apply at Online Procedures Kawasaki (e-KAWASAKI).

Those using Online Procedures Kawasaki (e-KAWASAKI) for the first time must complete user registration.

- (2) Paper applications <refer to entry example on the back of the application form>

After entering the necessary information in the enclosed application form, please submit it by post (applicant pays the postal fees).

[Send to] Kawasaki City Board of Education Staff Office General Affairs Department Educational Affairs Division

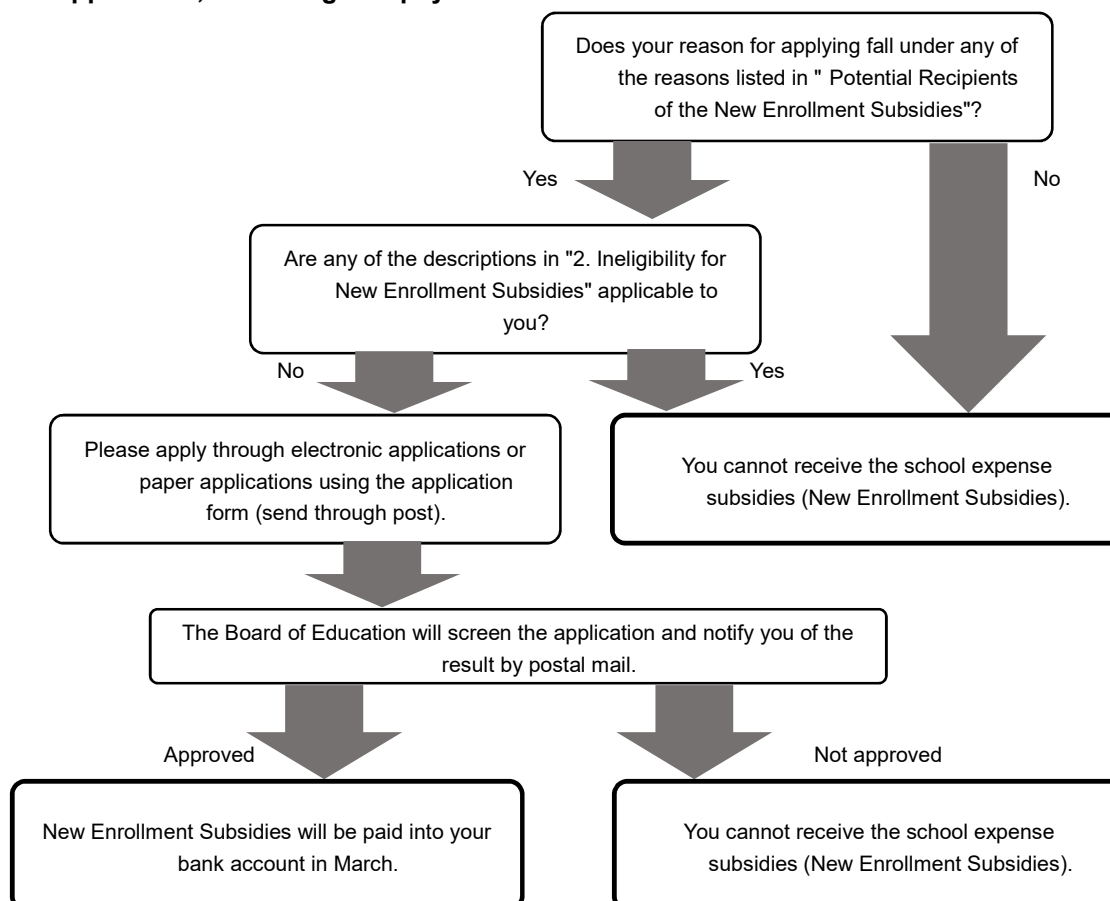
- (3) Submission deadline

Electronic and paper applications must be submitted by January 8 2025 (Wed.) (postmark accepted if sending through post)

~~※Please note that applications will not be accepted under any circumstances after this deadline.~~

**※ Electronic and paper applications will not be accepted if the deadline is missed due to problems with the application.**

### 5. Flow of application, screening and payment



※Students who have been approved for new school enrollment preparation funds will be treated as having applied for tuition aid after being admitted to the school (details will be provided when notifying you of the approval results).

※If those who have missed the deadline for this application or those who havenot been approved apply for tuition aid, and are approved for it, after enrolling in school (for the 2025 year), they can receive school supply aid for newly enrolled children, which is equivalent to the new school enrollment preparation funds.

**6. Inquiries**

Academic Division, General Affairs Department, Office of the Secretariat,  
Kawasaki City Board of Education: 044-200-3736

Website: <https://www.city.kawasaki.jp/880/page/0000134202.html>

